

**A-3a ITA Retention of C-peptide post last infusion (K-M plots) Significant Predictors**

Recipient\_Age

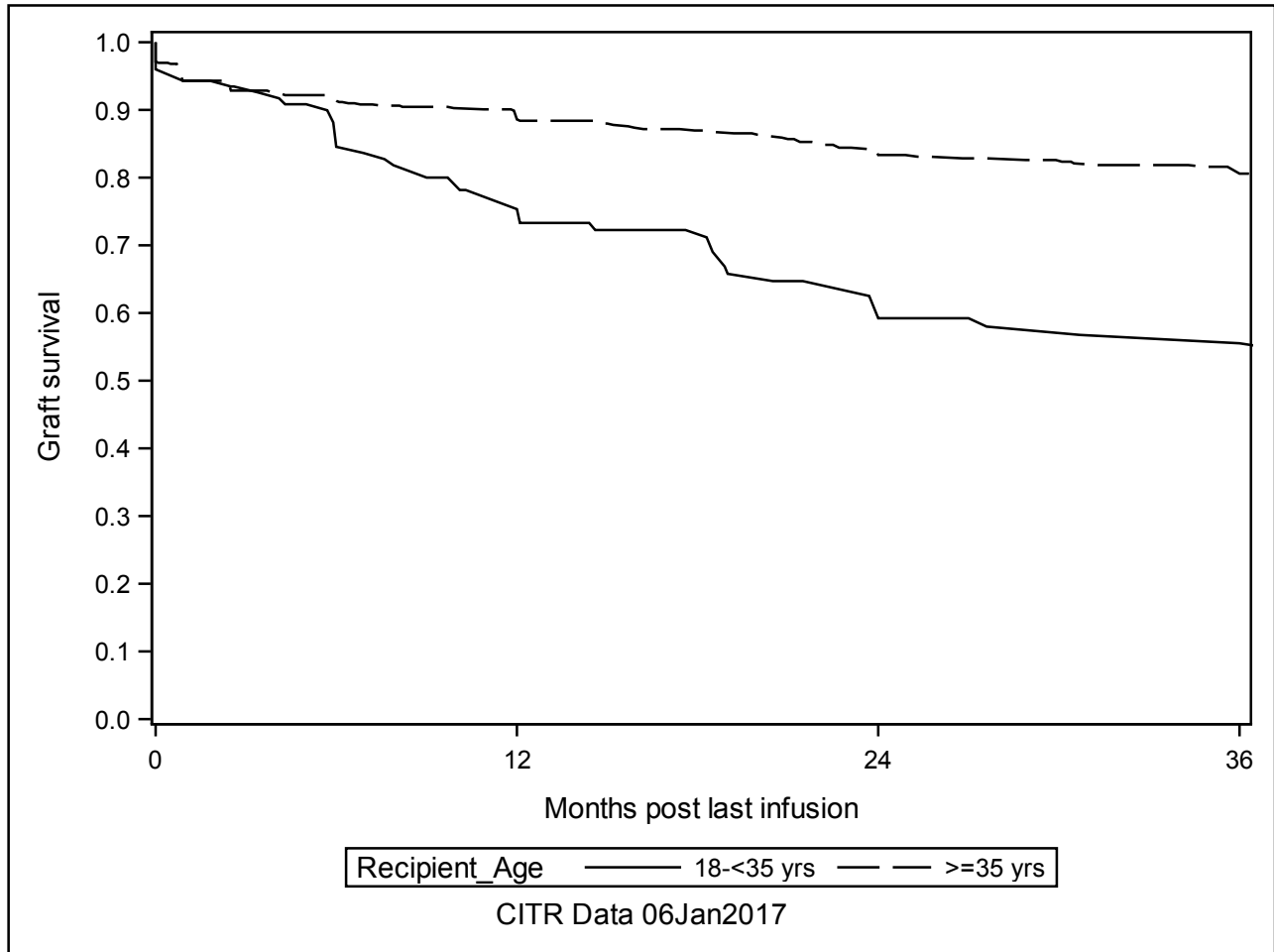
**The LIFETEST Procedure**

---

Test of Equality over Strata

Test	Chi-Square	DF	Pr > Chi-Square
Log-Rank	27.0415	1	<.0001
Wilcoxon	22.1574	1	<.0001
-2Log(LR)	26.8715	1	<.0001

---



**A-3a ITA Retention of C-peptide post last infusion (K-M plots) Significant Predictors**

Donor\_ALT

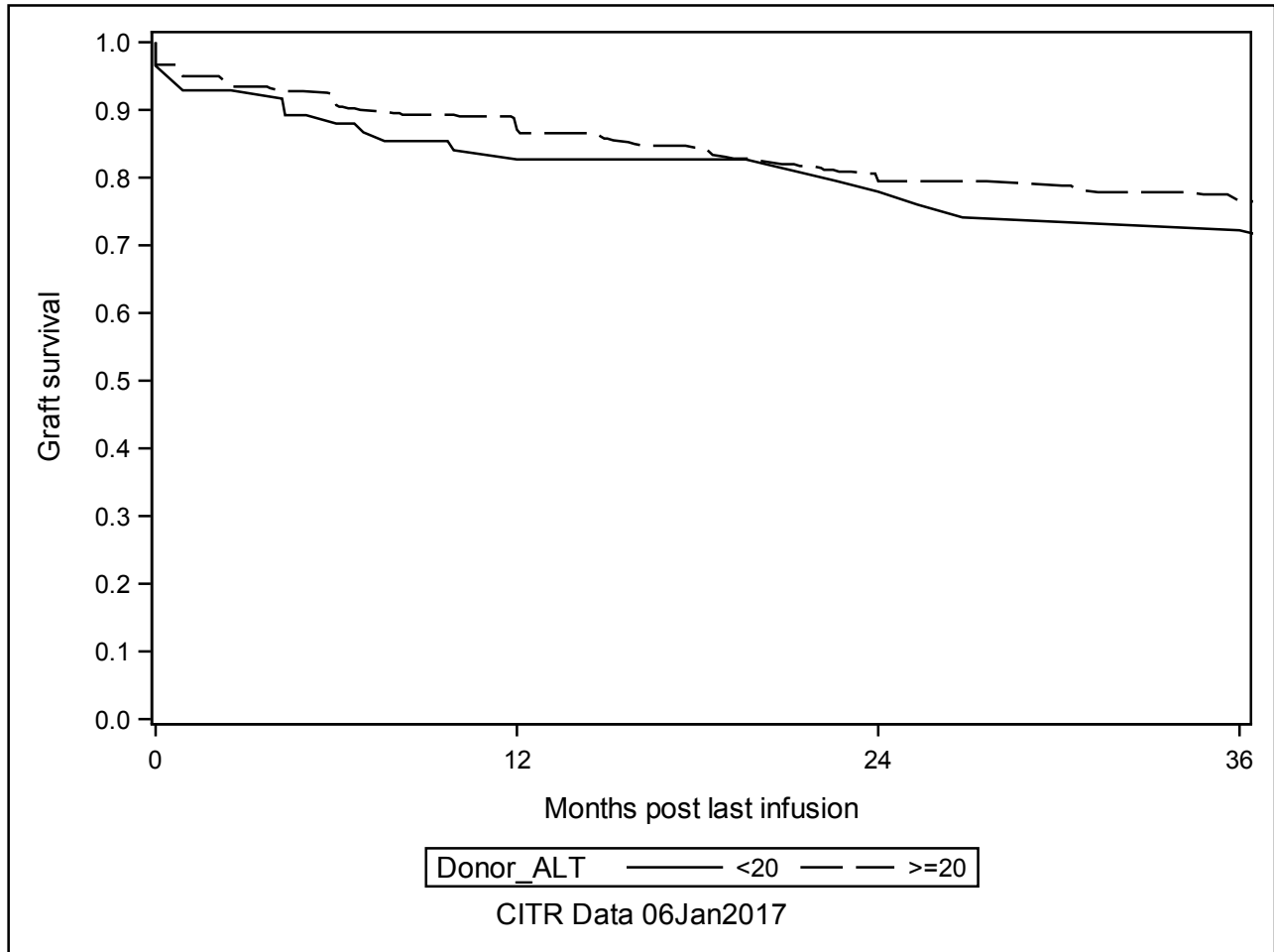
**The LIFETEST Procedure**

---

Test of Equality over Strata

Test	Chi-Square	DF	Pr > Chi-Square
Log-Rank	2.9810	1	0.0842
Wilcoxon	1.5269	1	0.2166
-2Log(LR)	2.9477	1	0.0860

---



**A-3a ITA Retention of C-peptide post last infusion (K-M plots) Significant Predictors**

Baseline\_autonomic\_neuropathy

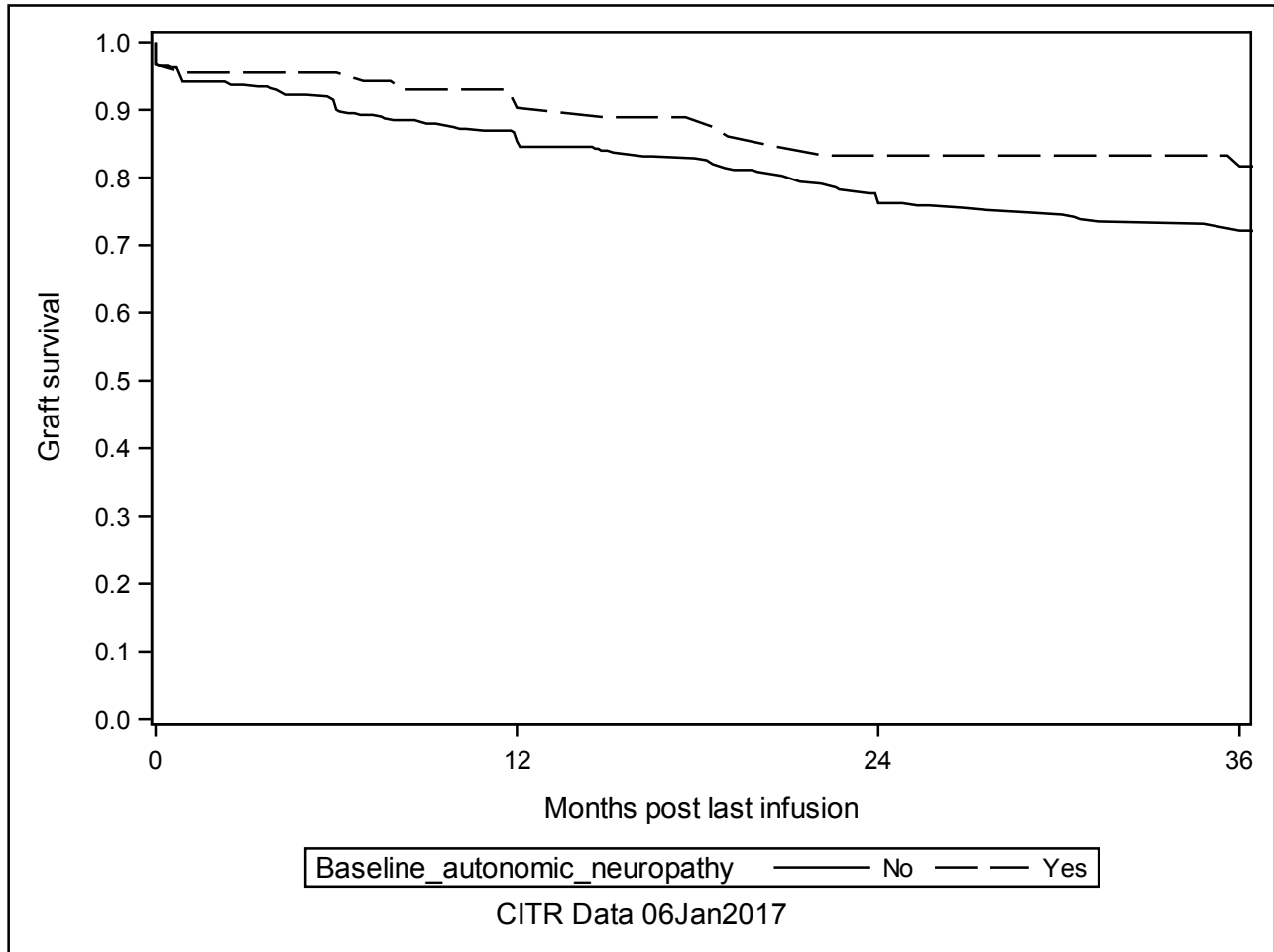
**The LIFETEST Procedure**

---

Test of Equality over Strata

Test	Chi-Square	DF	Pr > Chi-Square
Log-Rank	3.6419	1	0.0563
Wilcoxon	2.9115	1	0.0879
-2Log(LR)	7.0458	1	0.0079

---



**A-3a ITA Retention of C-peptide post last infusion (K-M plots) Significant Predictors**

Baseline\_BP\_meds

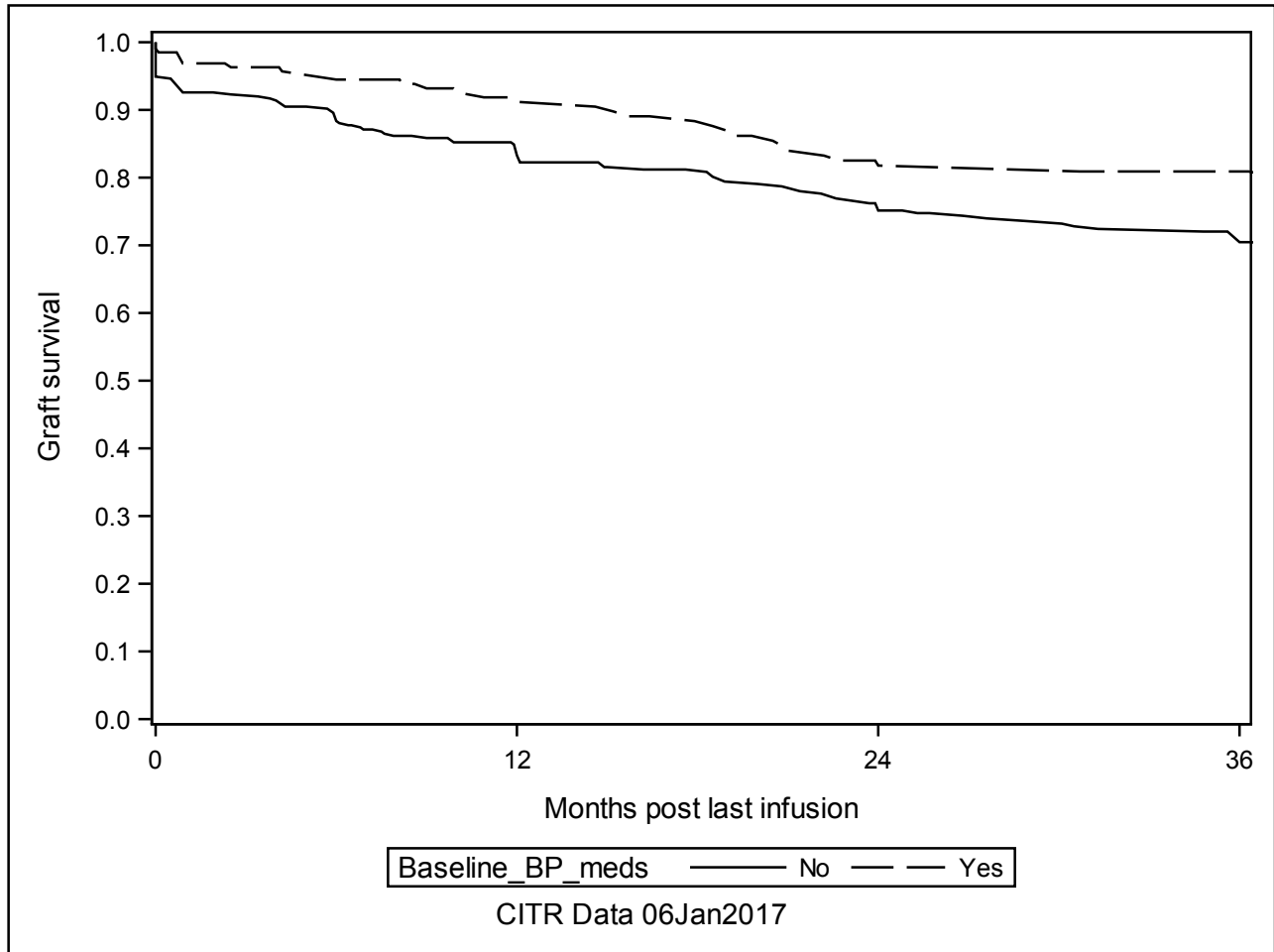
**The LIFETEST Procedure**

---

Test of Equality over Strata

Test	Chi-Square	DF	Pr > Chi-Square
Log-Rank	4.9955	1	0.0254
Wilcoxon	6.5663	1	0.0104
-2Log(LR)	4.4505	1	0.0349

---

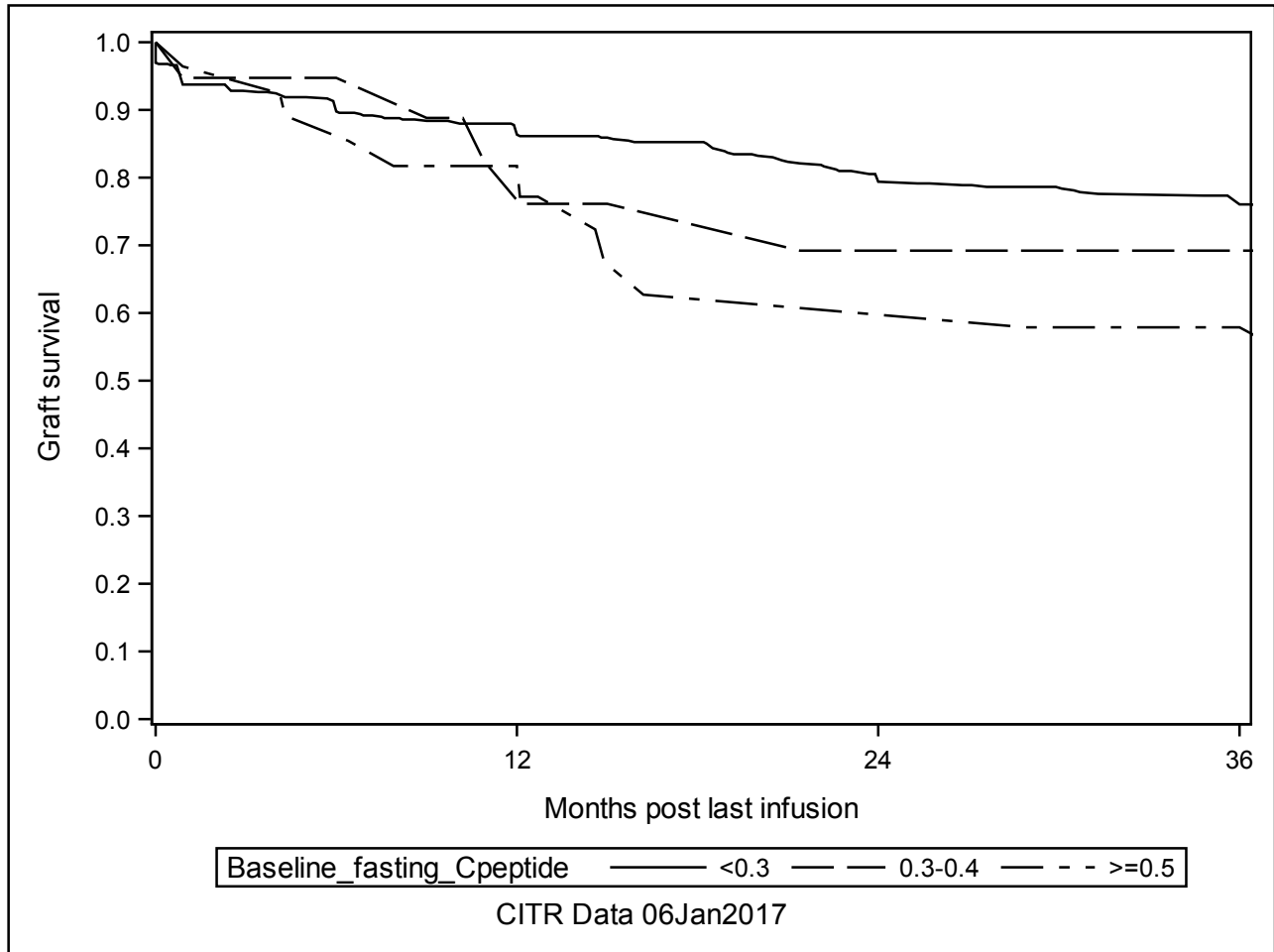


**A-3a ITA Retention of C-peptide post last infusion (K-M plots) Significant Predictors**

Baseline\_fasting\_Cpeptide

**The LIFETEST Procedure**

Test of Equality over Strata			
Test	Chi-Square	DF	Pr > Chi-Square
Log-Rank	6.2496	2	0.0439
Wilcoxon	3.9222	2	0.1407
-2Log(LR)	5.5530	2	0.0623



**A-3a ITA Retention of C-peptide post last infusion (K-M plots) Significant Predictors**

Baseline\_antiHPT\_treatment

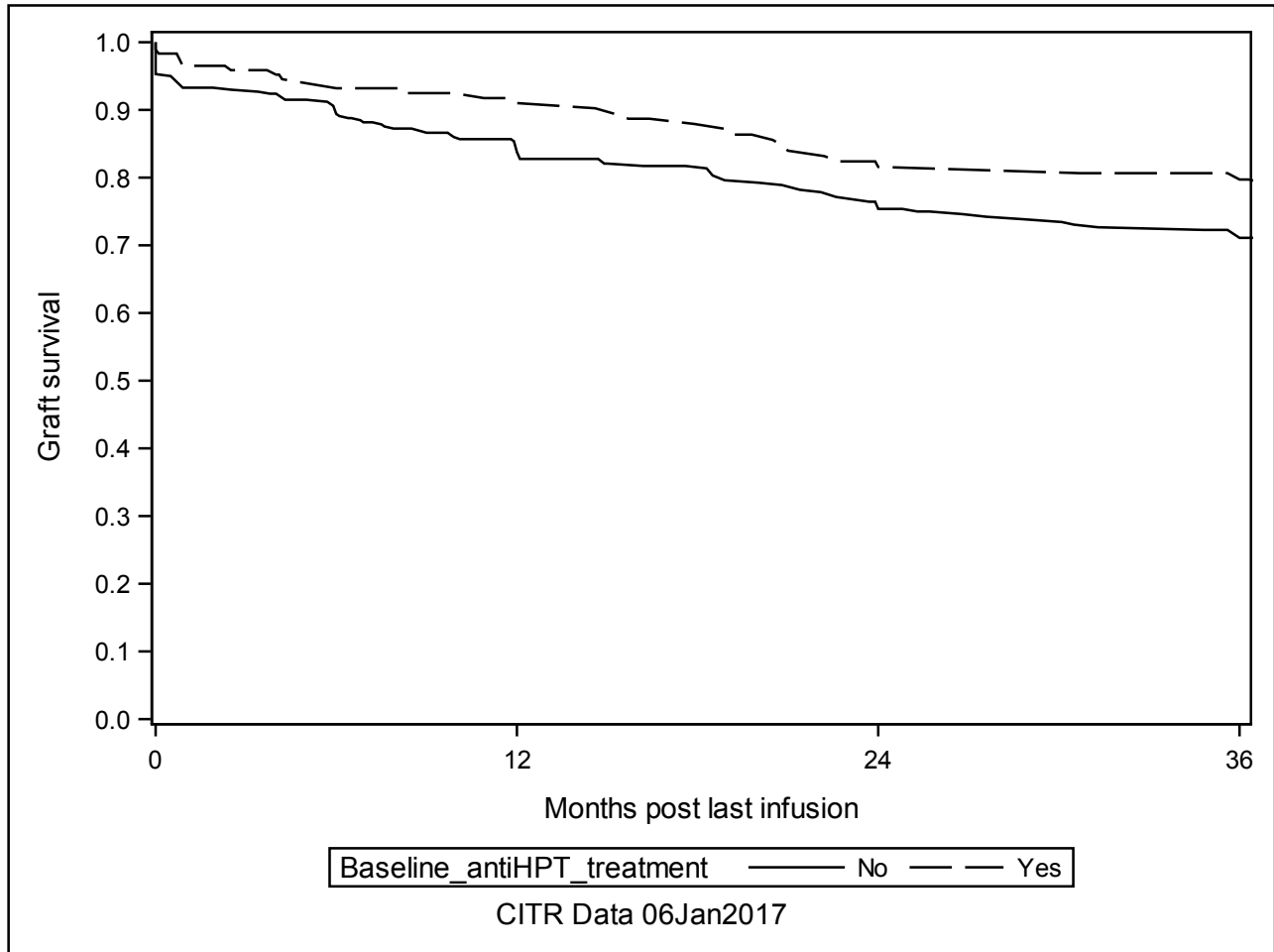
**The LIFETEST Procedure**

---

Test of Equality over Strata

Test	Chi-Square	DF	Pr > Chi-Square
Log-Rank	4.2261	1	0.0398
Wilcoxon	4.6992	1	0.0302
-2Log(LR)	4.0210	1	0.0449

---



**A-3a ITA Retention of C-peptide post last infusion (K-M plots) Significant Predictors**

Baseline\_insulin\_units\_per\_kg\_per\_day

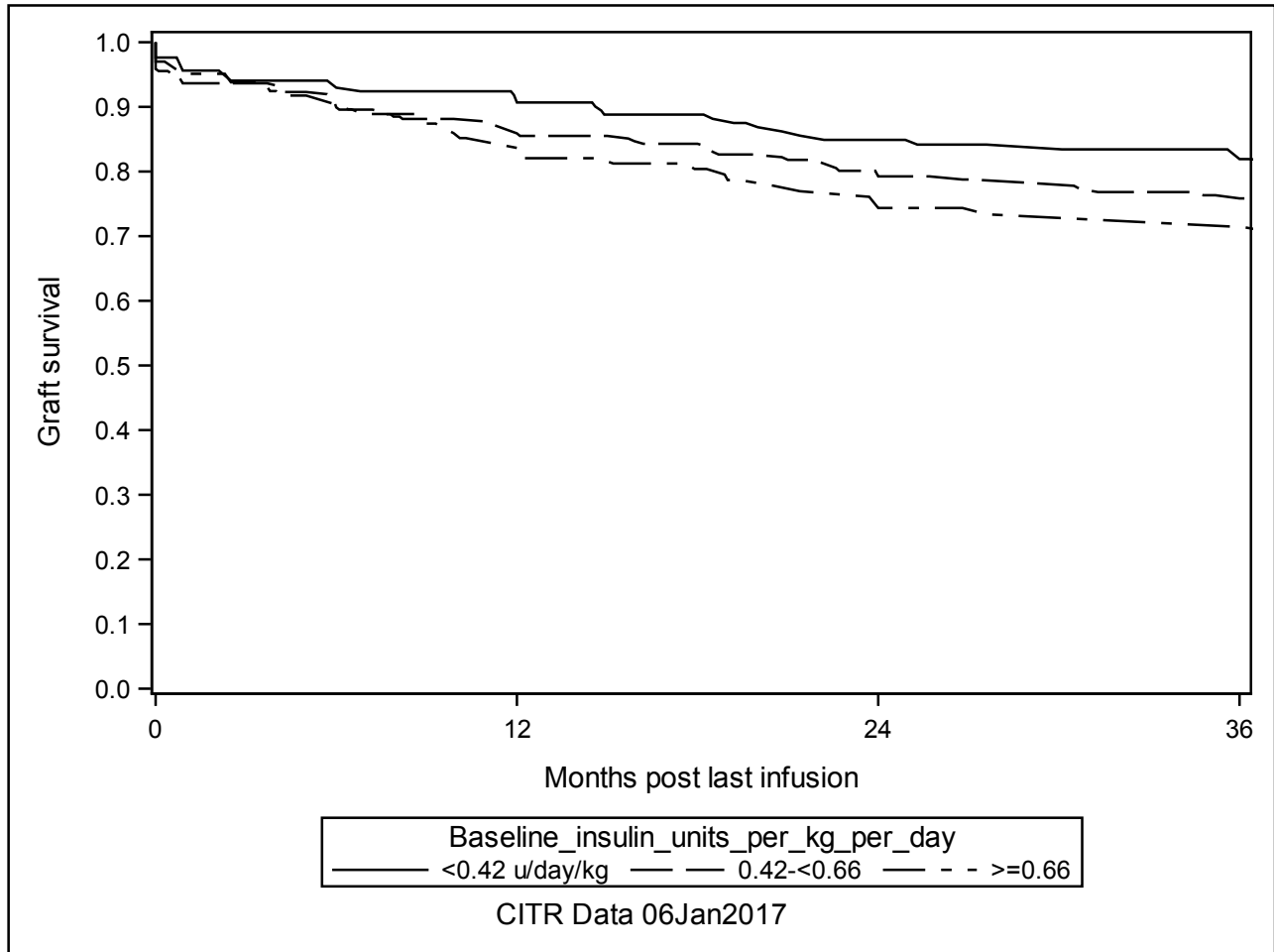
**The LIFETEST Procedure**

---

Test of Equality over Strata

Test	Chi-Square	DF	Pr > Chi-Square
Log-Rank	4.8944	2	0.0865
Wilcoxon	4.1566	2	0.1251
-2Log(LR)	6.1249	2	0.0468

---



**A-3a ITA Retention of C-peptide post last infusion (K-M plots) Significant Predictors**

Baseline\_antilipidemics

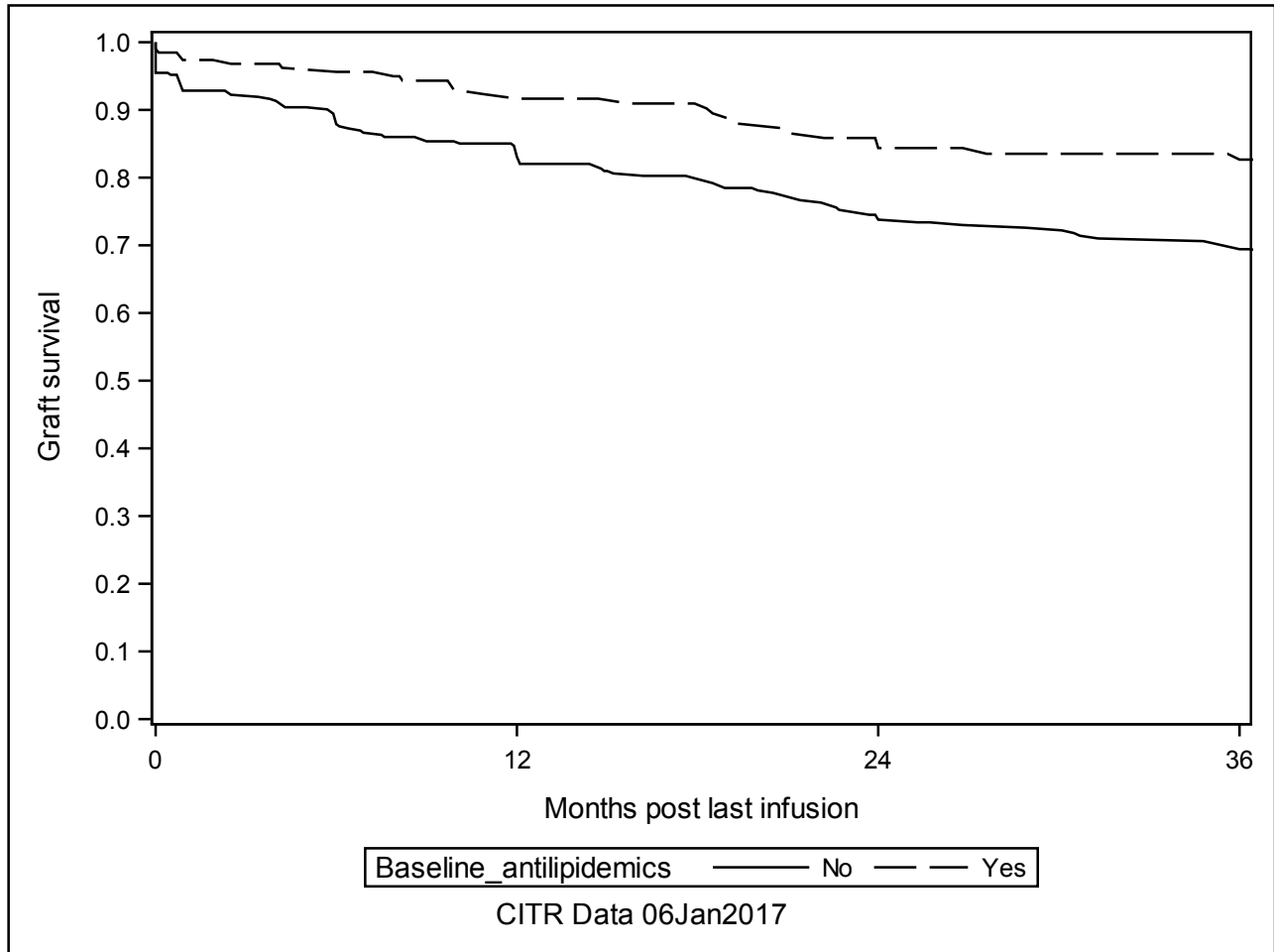
**The LIFETEST Procedure**

---

Test of Equality over Strata

Test	Chi-Square	DF	Pr > Chi-Square
Log-Rank	11.3707	1	0.0007
Wilcoxon	12.3376	1	0.0004
-2Log(LR)	10.4783	1	0.0012

---





**A-3a ITA Retention of C-peptide post last infusion (K-M plots) Significant Predictors**

Baseline\_peripheral\_neuropathy

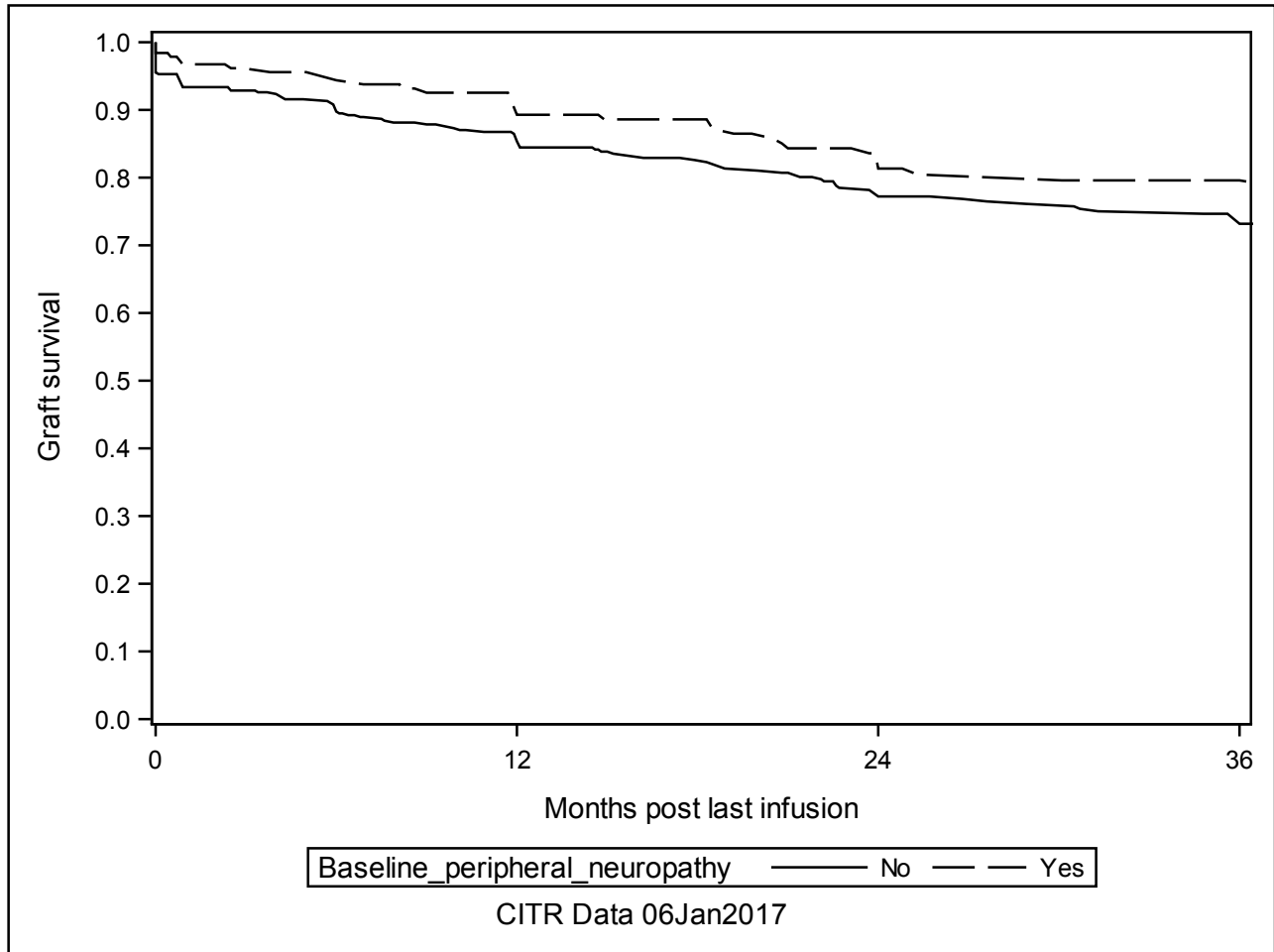
**The LIFETEST Procedure**

---

Test of Equality over Strata

Test	Chi-Square	DF	Pr > Chi-Square
Log-Rank	3.6249	1	0.0569
Wilcoxon	3.6391	1	0.0564
-2Log(LR)	4.7696	1	0.0290

---

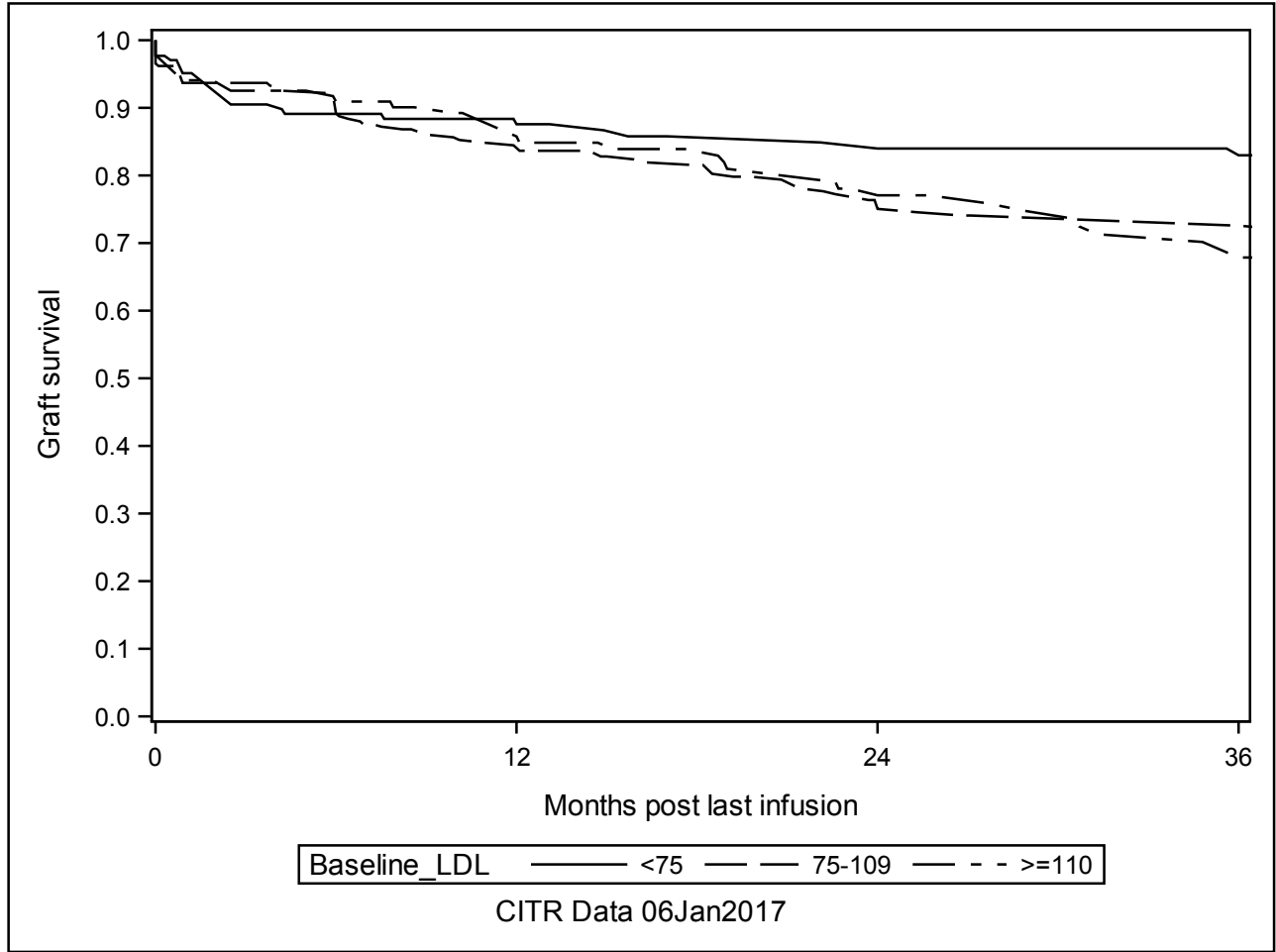


**A-3a ITA Retention of C-peptide post last infusion (K-M plots) Significant Predictors**

Baseline\_LDL

**The LIFETEST Procedure**

Test of Equality over Strata			
Test	Chi-Square	DF	Pr > Chi-Square
Log-Rank	5.5498	2	0.0624
Wilcoxon	3.2759	2	0.1944
-2Log(LR)	5.0909	2	0.0784



**A-3a ITA Retention of C-peptide post last infusion (K-M plots) Significant Predictors**

Bcell\_depletion\_Rituximab

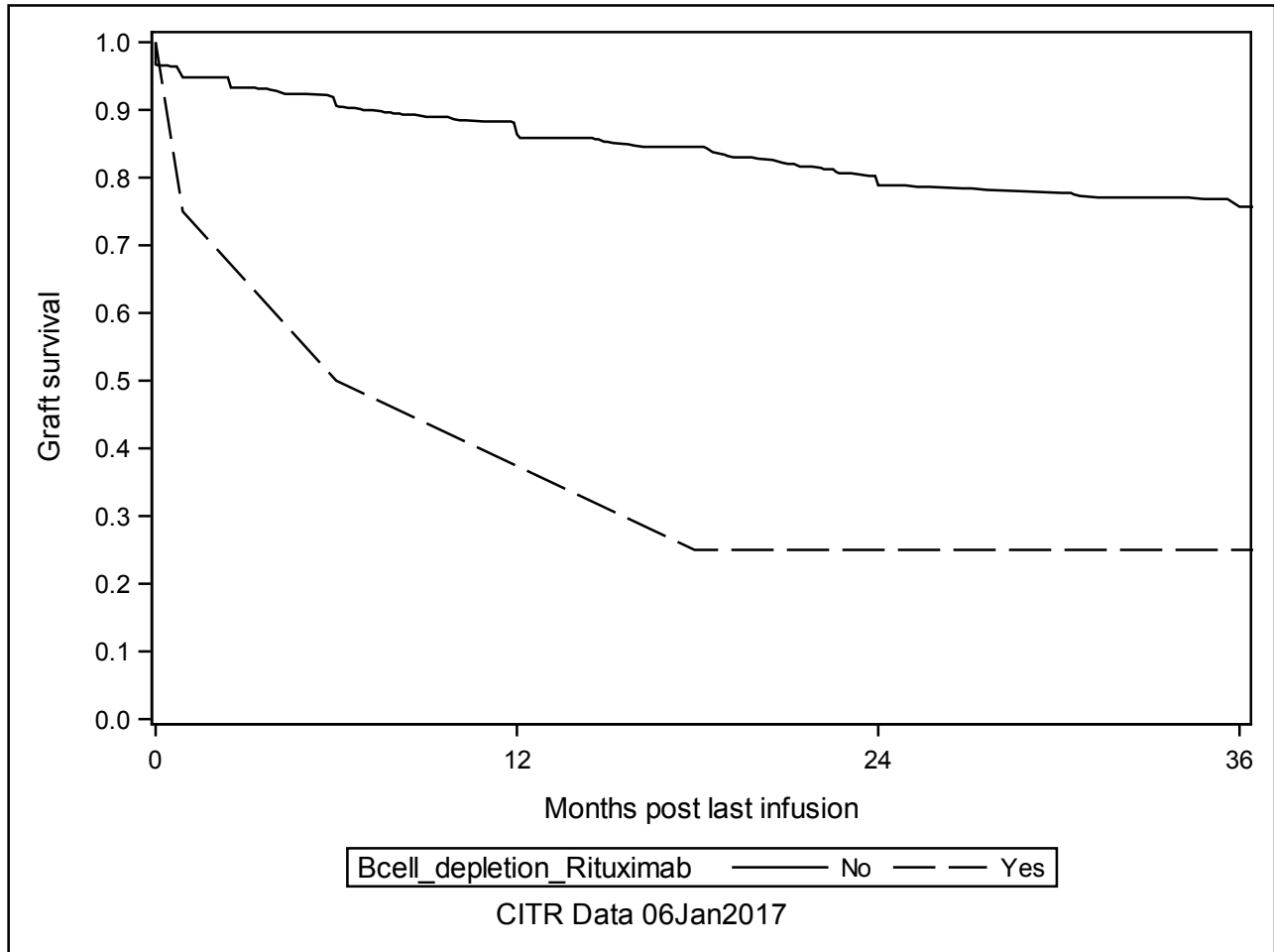
**The LIFETEST Procedure**

---

Test of Equality over Strata

Test	Chi-Square	DF	Pr > Chi-Square
Log-Rank	6.5877	1	0.0103
Wilcoxon	8.0376	1	0.0046
-2Log(LR)	4.1479	1	0.0417

---



**A-3a ITA Retention of C-peptide post last infusion (K-M plots) Significant Predictors**

Calcineurin\_inhibitor

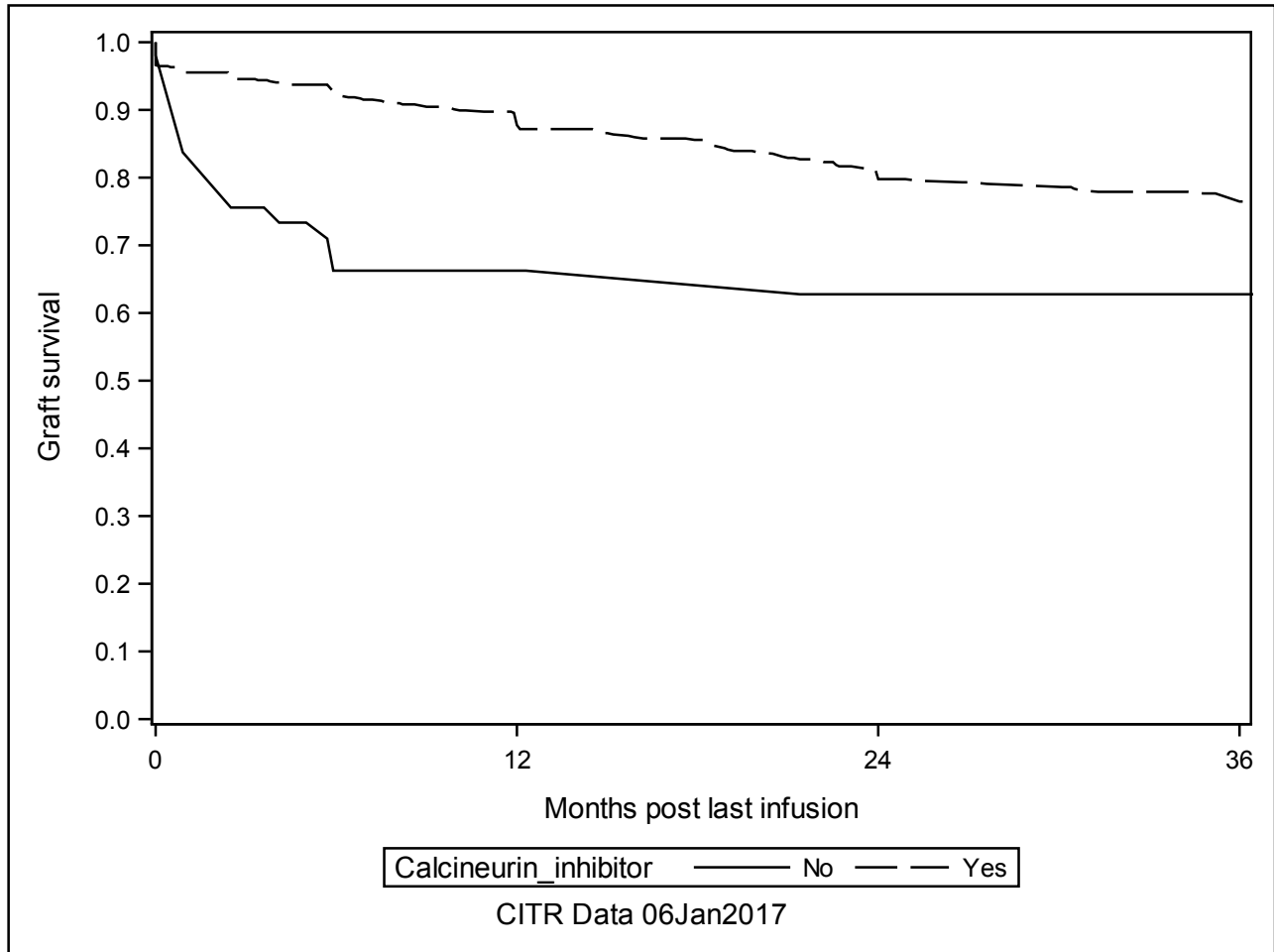
**The LIFETEST Procedure**

---

Test of Equality over Strata

Test	Chi-Square	DF	Pr >
			Chi-Square
Log-Rank	10.3348	1	0.0013
Wilcoxon	15.6330	1	<.0001
-2Log(LR)	14.9493	1	0.0001

---



**A-3a ITA Retention of C-peptide post last infusion (K-M plots) Significant Predictors**

Culture\_time

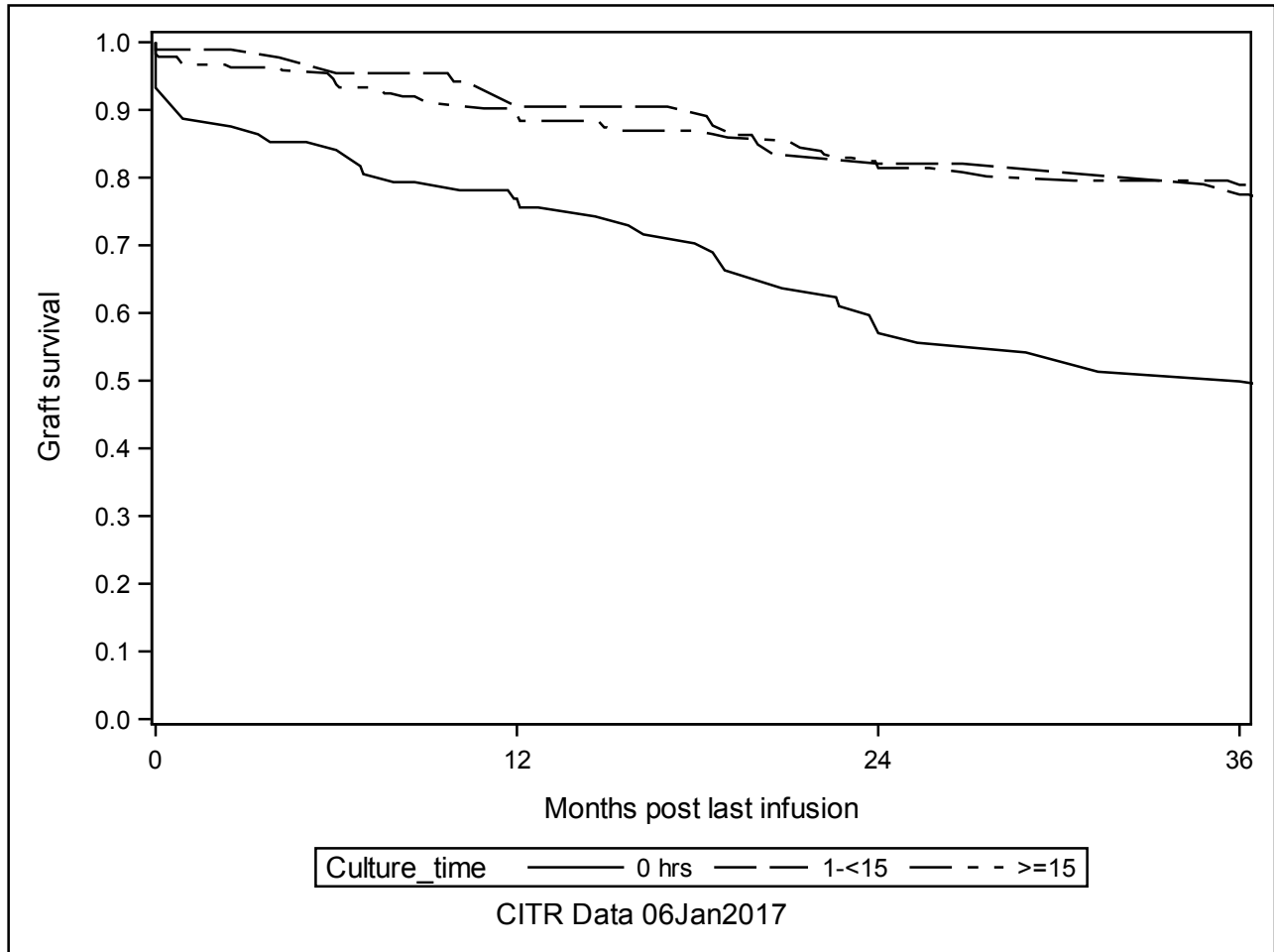
**The LIFETEST Procedure**

---

Test of Equality over Strata

Test	Chi-Square	DF	Pr > Chi-Square
Log-Rank	36.6703	2	<.0001
Wilcoxon	32.2125	2	<.0001
-2Log(LR)	26.3567	2	<.0001

---



**A-3a ITA Retention of C-peptide post last infusion (K-M plots) Significant Predictors**

Cultured\_6hours\_or\_more

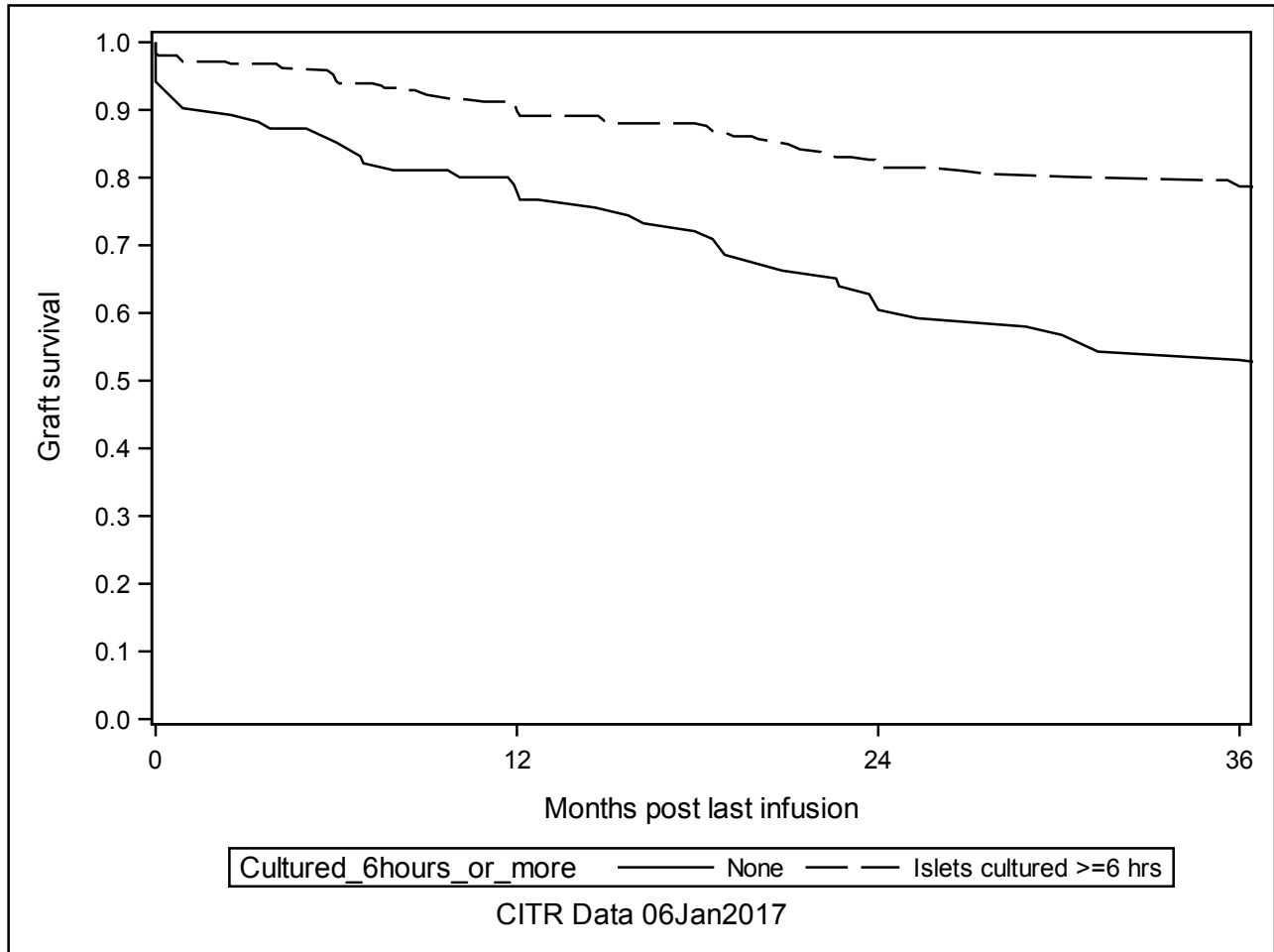
**The LIFETEST Procedure**

---

Test of Equality over Strata

Test	Chi-Square	DF	Pr > Chi-Square
Log-Rank	30.7155	1	<.0001
Wilcoxon	26.9738	1	<.0001
-2Log(LR)	21.9057	1	<.0001

---



**A-3a ITA Retention of C-peptide post last infusion (K-M plots) Significant Predictors**

Donor\_Hispanic

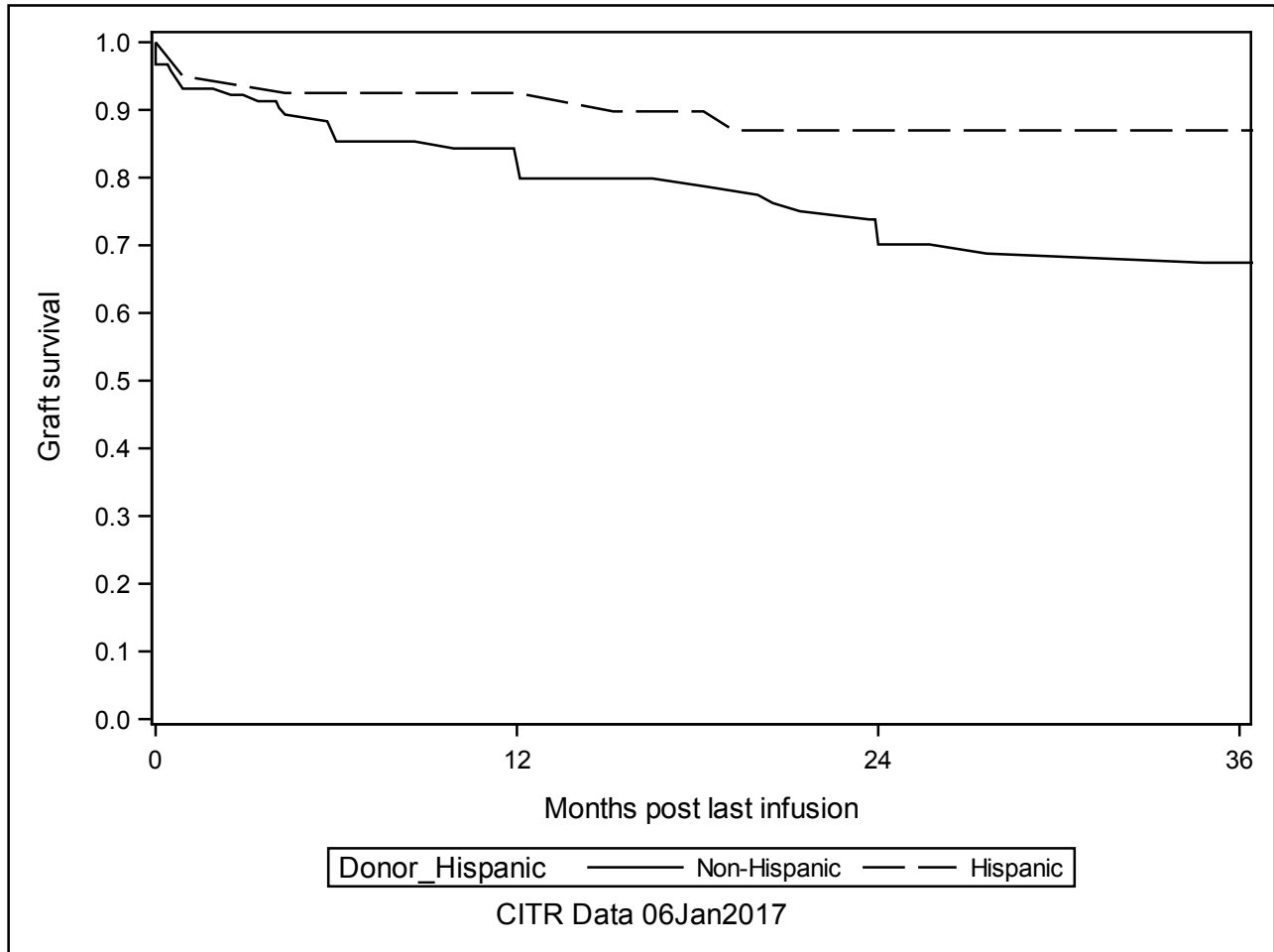
**The LIFETEST Procedure**

---

Test of Equality over Strata

Test	Chi-Square	DF	Pr > Chi-Square
Log-Rank	3.4873	1	0.0618
Wilcoxon	4.2502	1	0.0392
-2Log(LR)	4.3947	1	0.0361

---



**A-3a ITA Retention of C-peptide post last infusion (K-M plots) Significant Predictors**

Donor\_hx\_alcohol

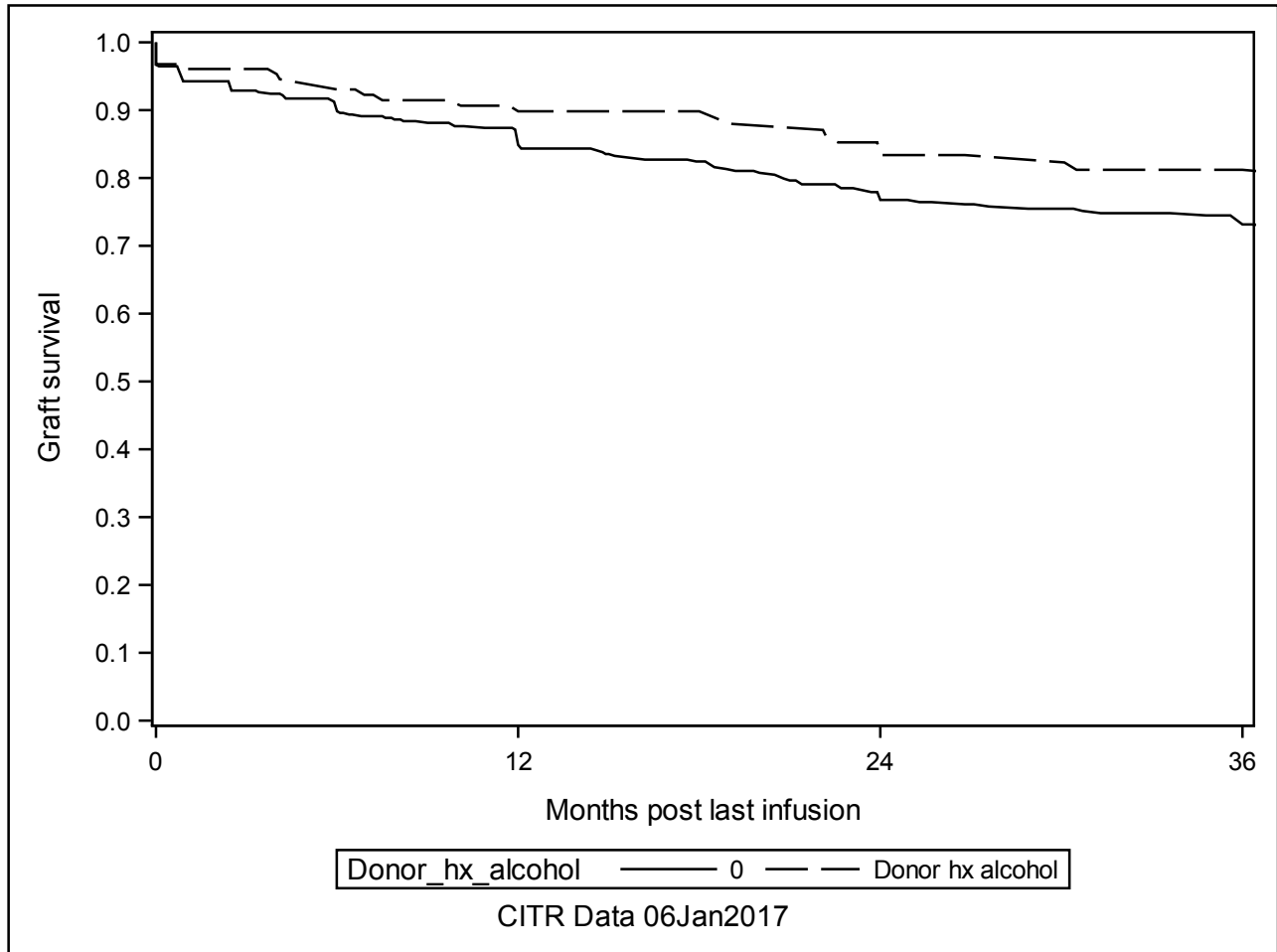
**The LIFETEST Procedure**

---

Test of Equality over Strata

Test	Chi-Square	DF	Pr > Chi-Square
Log-Rank	3.0393	1	0.0813
Wilcoxon	3.4069	1	0.0649
-2Log(LR)	3.3203	1	0.0684

---



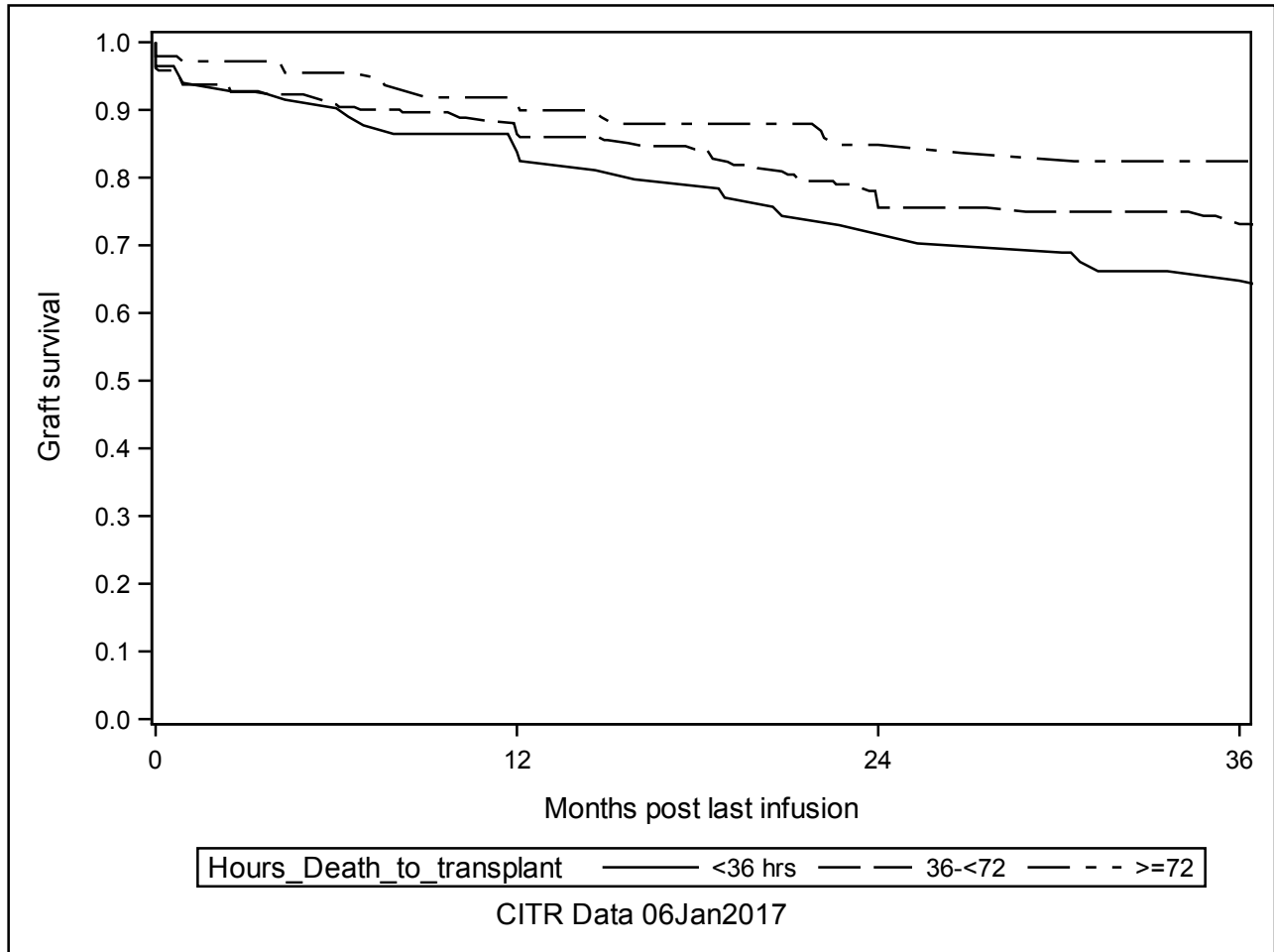


**A-3a ITA Retention of C-peptide post last infusion (K-M plots) Significant Predictors**

Hours\_Death\_to\_transplant

**The LIFETEST Procedure**

Test of Equality over Strata			
Test	Chi-Square	DF	Pr > Chi-Square
Log-Rank	9.7708	2	0.0076
Wilcoxon	7.4501	2	0.0241
-2Log(LR)	6.5175	2	0.0384



**A-3a ITA Retention of C-peptide post last infusion (K-M plots) Significant Predictors**

Duration\_of\_diabetes

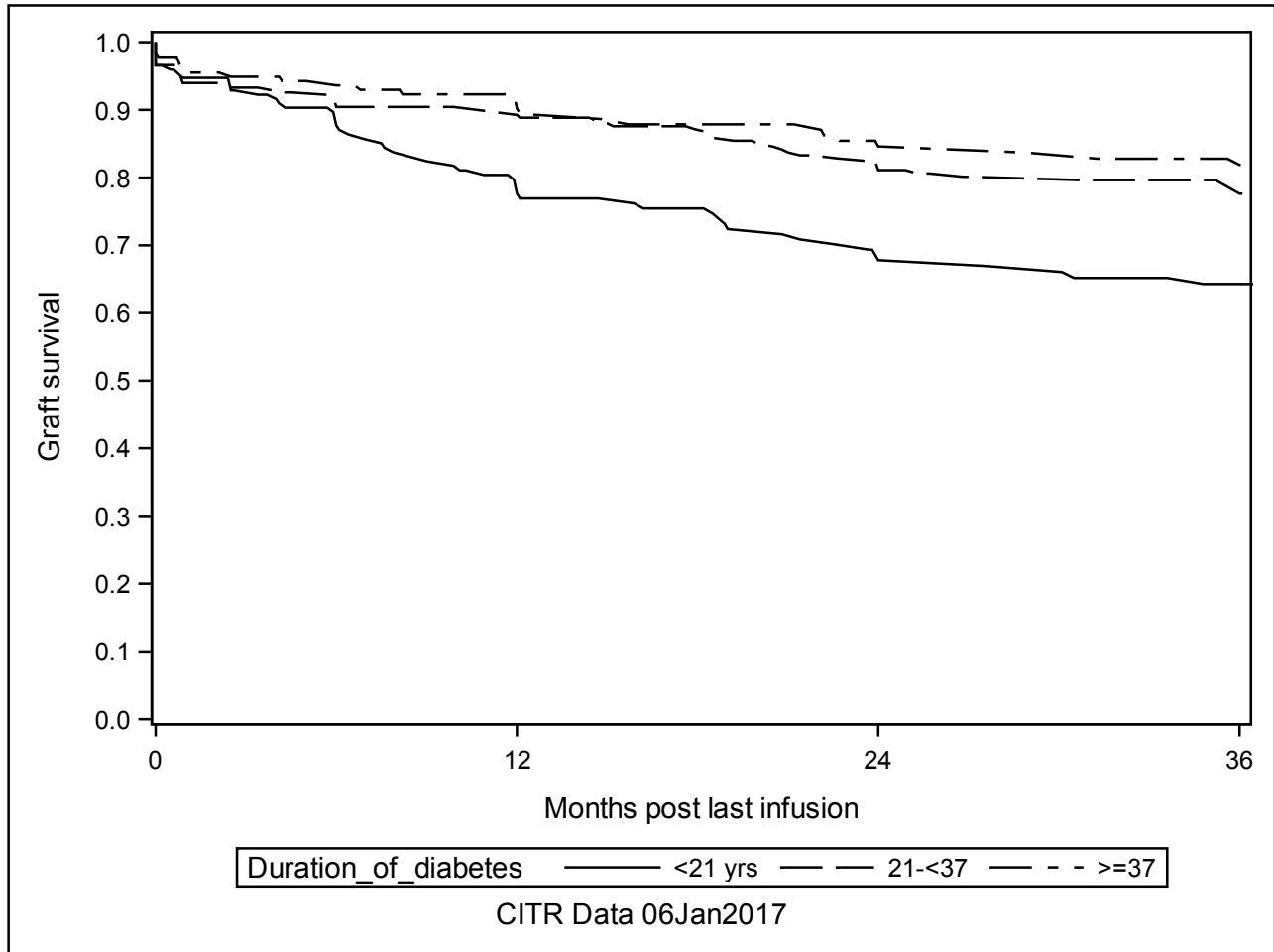
**The LIFETEST Procedure**

---

Test of Equality over Strata

Test	Chi-Square	DF	Pr > Chi-Square
Log-Rank	14.1194	2	0.0009
Wilcoxon	12.9950	2	0.0015
-2Log(LR)	15.2156	2	0.0005

---

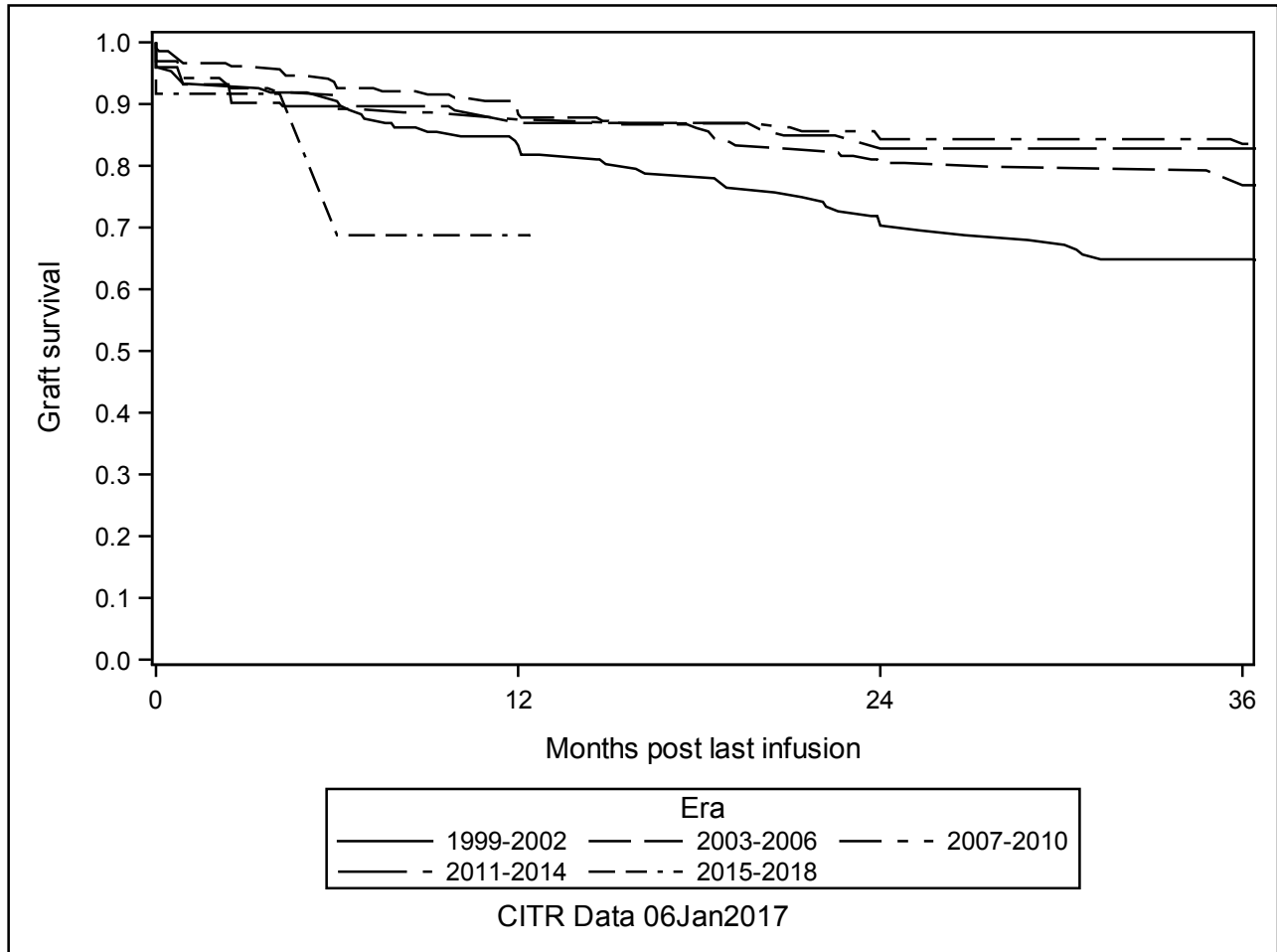


**A-3a ITA Retention of C-peptide post last infusion (K-M plots) Significant Predictors**

Era

**The LIFETEST Procedure**

Test of Equality over Strata			
Test	Chi-Square	DF	Pr > Chi-Square
Log-Rank	23.3464	4	0.0001
Wilcoxon	13.6259	4	0.0086
-2Log(LR)	19.3439	4	0.0007



**A-3a ITA Retention of C-peptide post last infusion (K-M plots) Significant Predictors**

IEQs\_infused

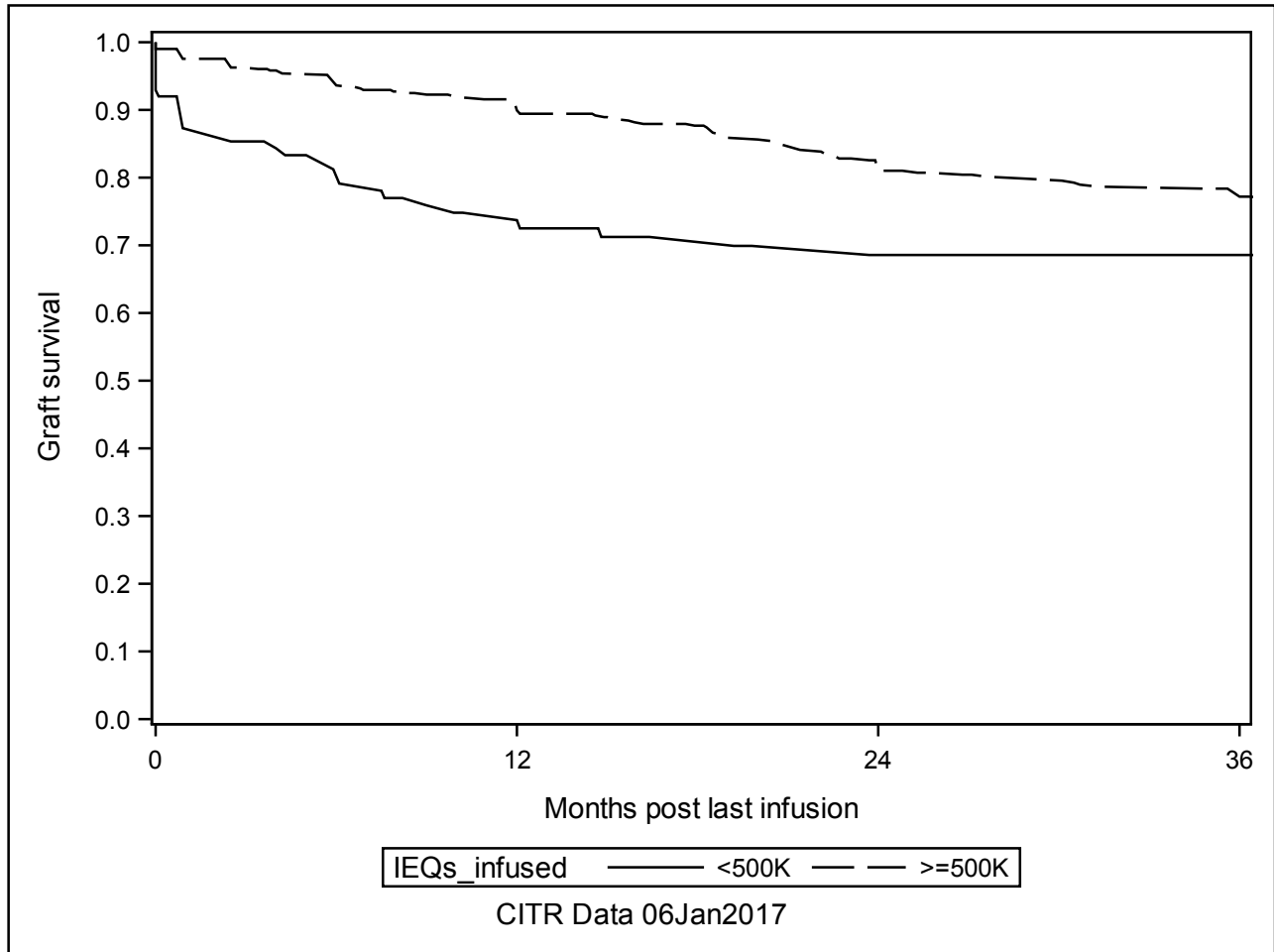
**The LIFETEST Procedure**

---

Test of Equality over Strata

Test	Chi-Square	DF	Pr > Chi-Square
Log-Rank	6.4715	1	0.0110
Wilcoxon	14.2412	1	0.0002
-2Log(LR)	7.2159	1	0.0072

---

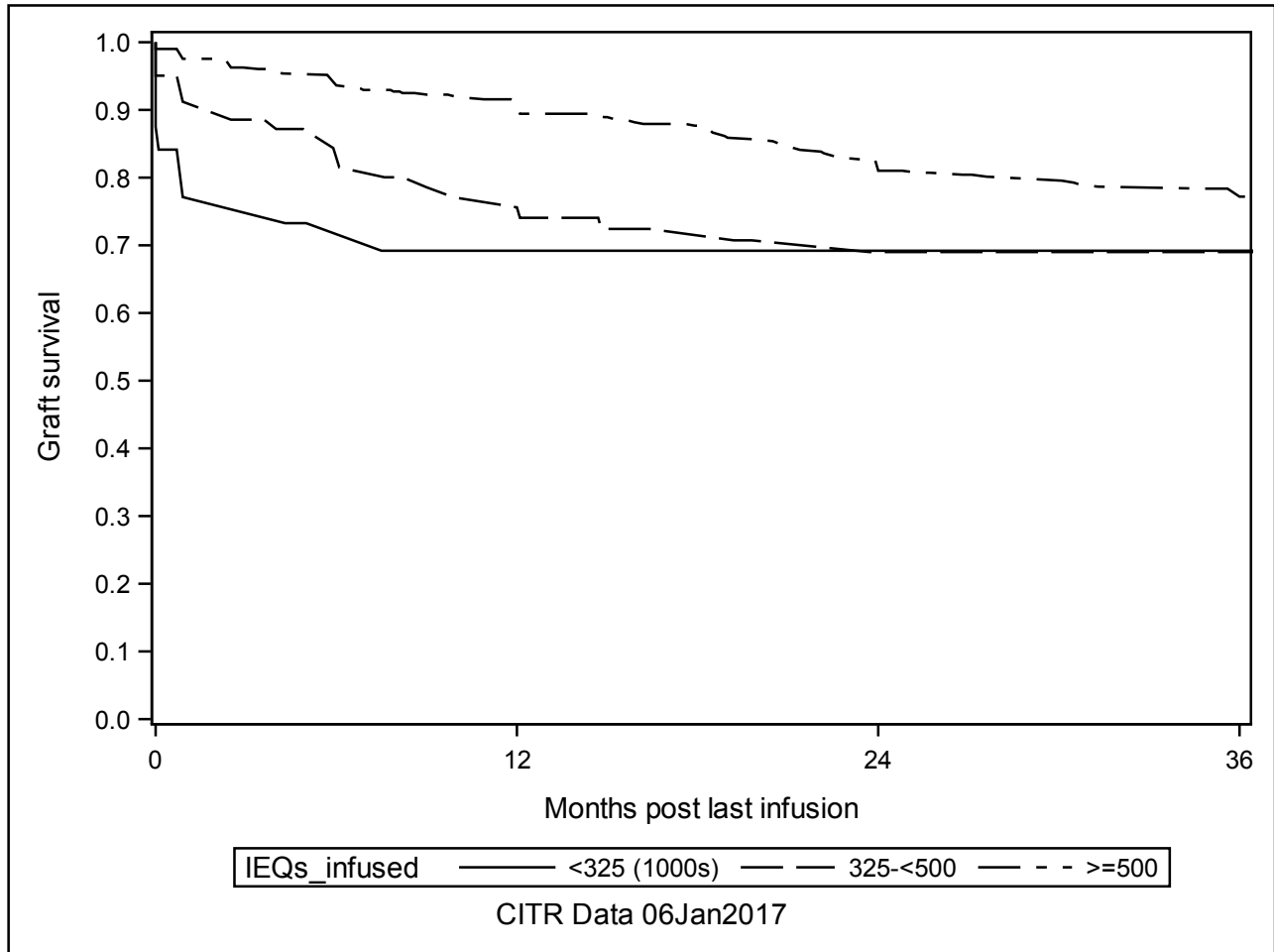


**A-3a ITA Retention of C-peptide post last infusion (K-M plots) Significant Predictors**

IEQs\_infused

**The LIFETEST Procedure**

Test of Equality over Strata			
Test	Chi-Square	DF	Pr > Chi-Square
Log-Rank	9.9988	2	0.0067
Wilcoxon	17.5489	2	0.0002
-2Log(LR)	11.0898	2	0.0039



**A-3a ITA Retention of C-peptide post last infusion (K-M plots) Significant Predictors**

Induction\_combination

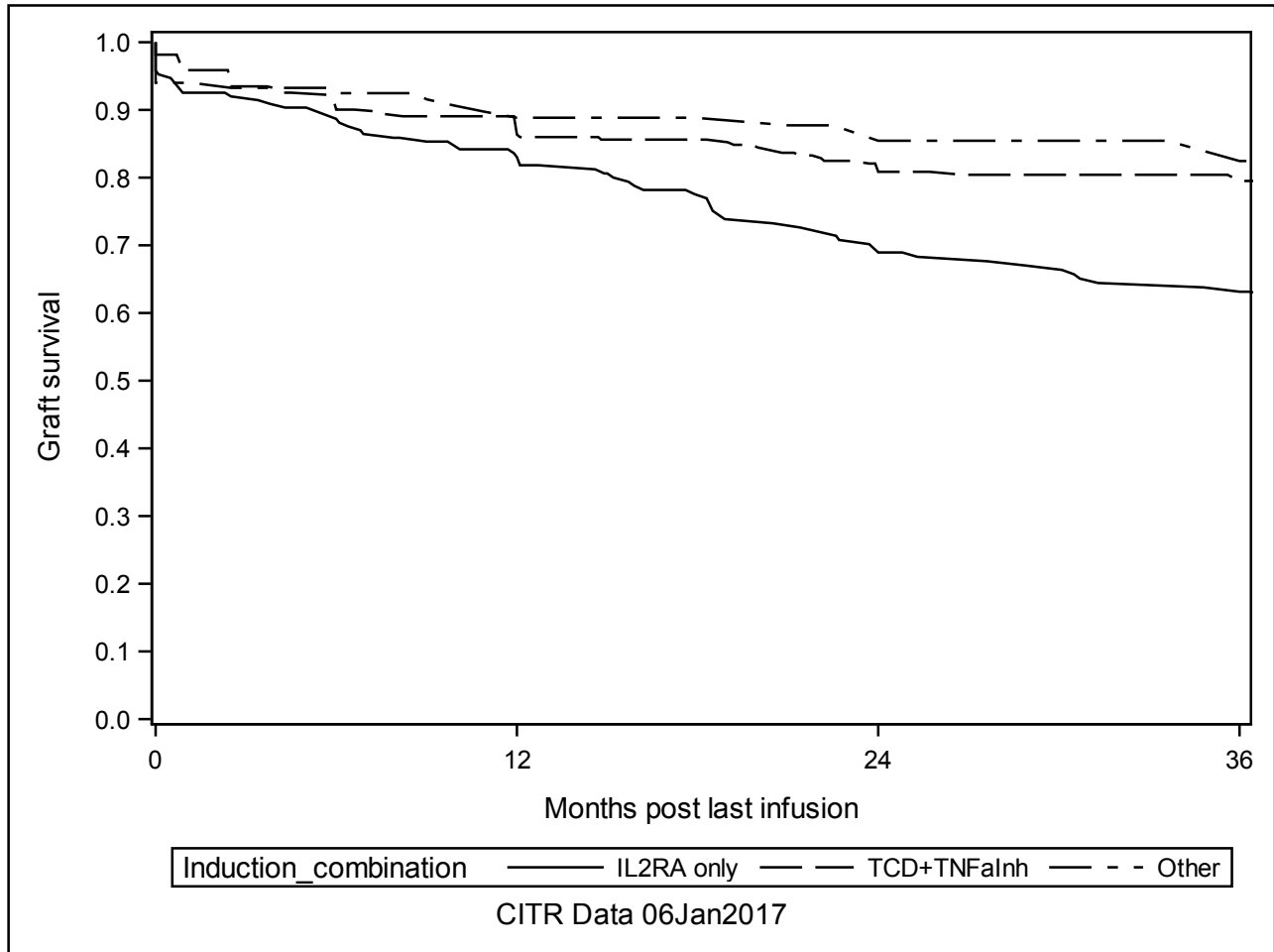
**The LIFETEST Procedure**

---

Test of Equality over Strata

Test	Chi-Square	DF	Pr > Chi-Square
Log-Rank	22.2537	2	<.0001
Wilcoxon	15.2829	2	0.0005
-2Log(LR)	13.3183	2	0.0013

---



**A-3a ITA Retention of C-peptide post last infusion (K-M plots) Significant Predictors**

Hours\_from\_Recovery\_to\_transplant

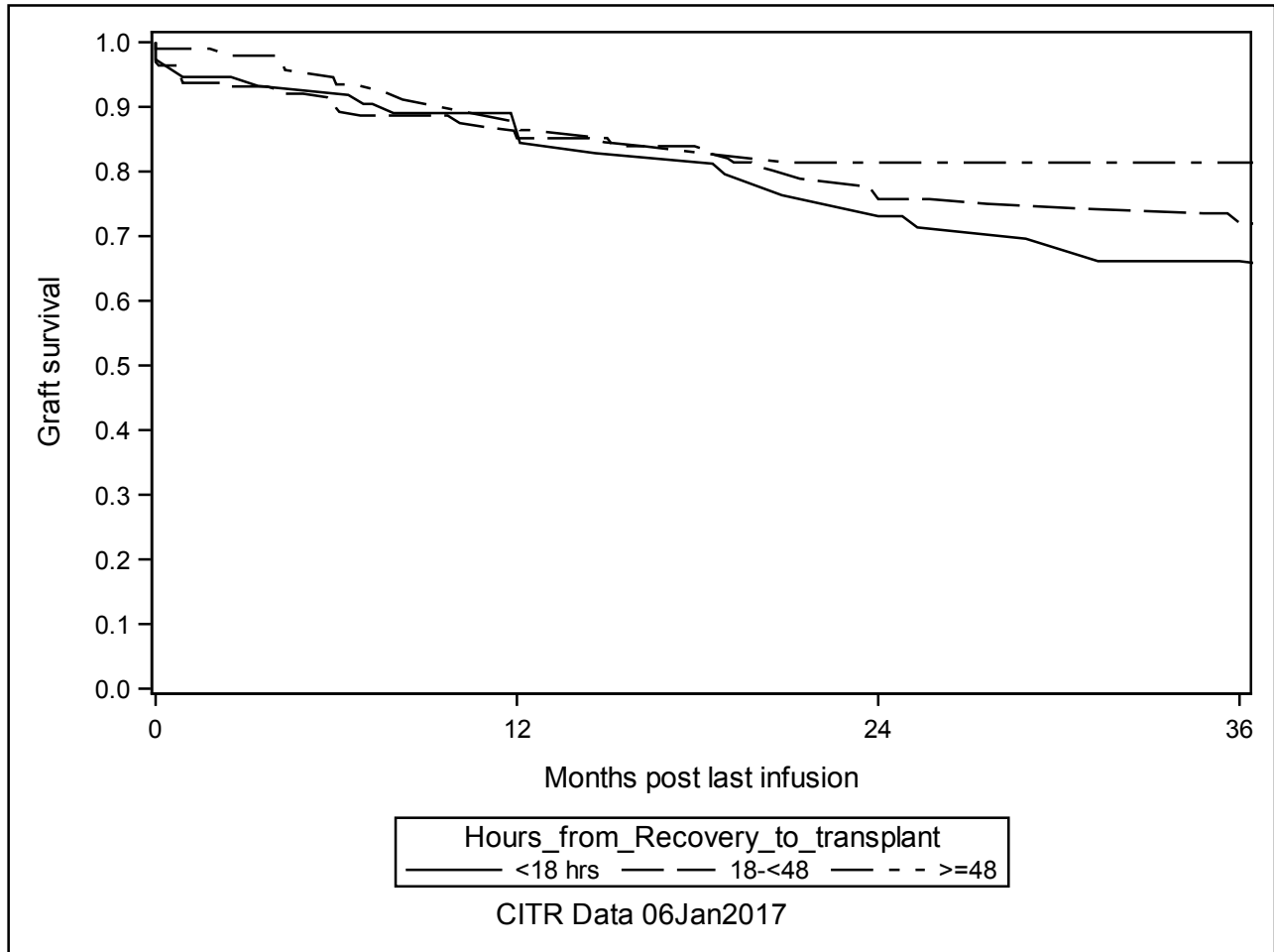
**The LIFETEST Procedure**

---

Test of Equality over Strata

Test	Chi-Square	DF	Pr > Chi-Square
Log-Rank	7.0247	2	0.0298
Wilcoxon	3.7293	2	0.1549
-2Log(LR)	5.8355	2	0.0541

---



**A-3a ITA Retention of C-peptide post last infusion (K-M plots) Significant Predictors**

Tcell\_depletion

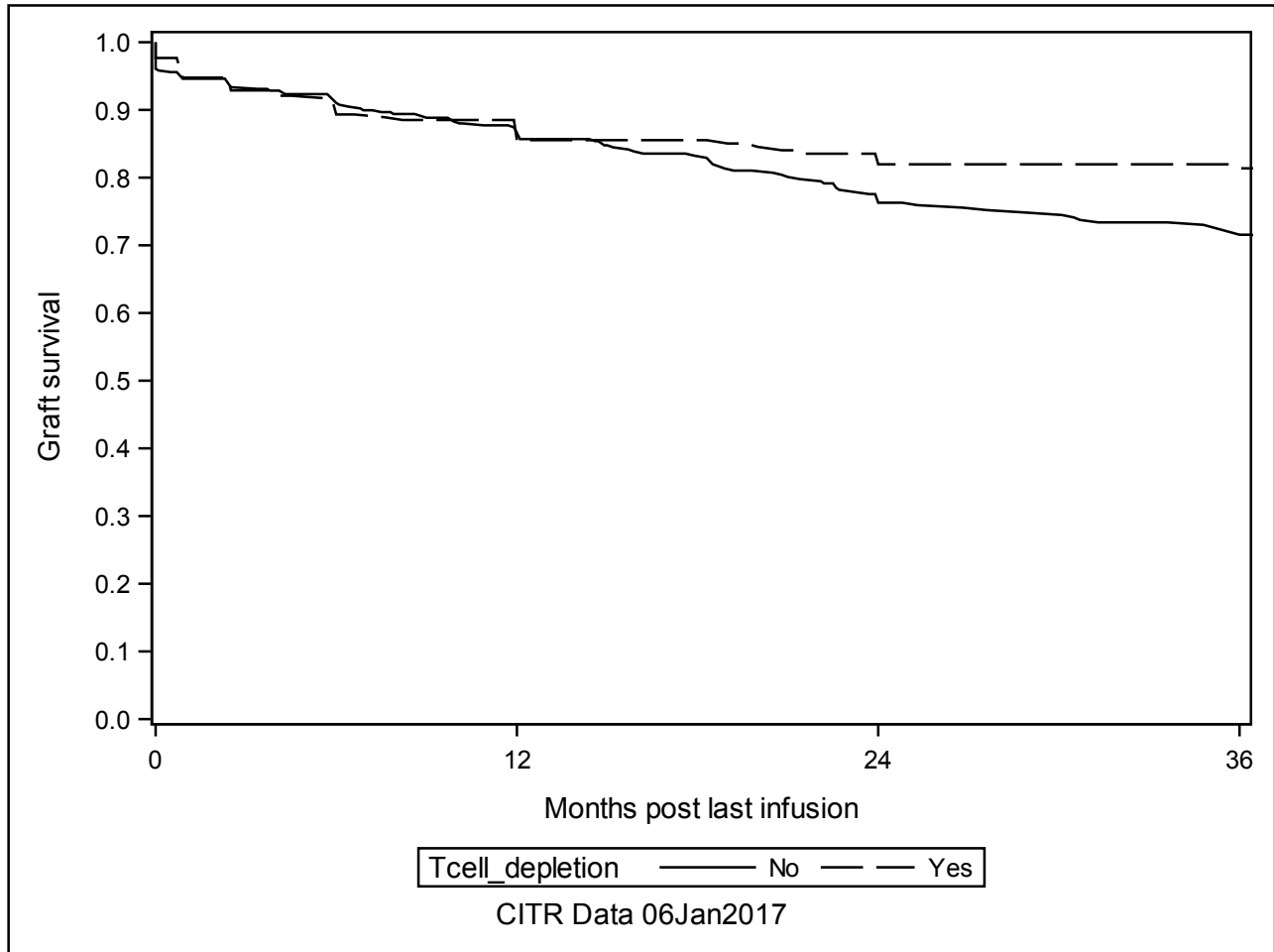
**The LIFETEST Procedure**

---

Test of Equality over Strata

Test	Chi-Square	DF	Pr >
			Chi-Square
Log-Rank	7.2696	1	0.0070
Wilcoxon	3.1817	1	0.0745
-2Log(LR)	5.1342	1	0.0235

---





**A-3a ITA Retention of C-peptide post last infusion (K-M plots) Significant Predictors**

TNFa\_inhibitor

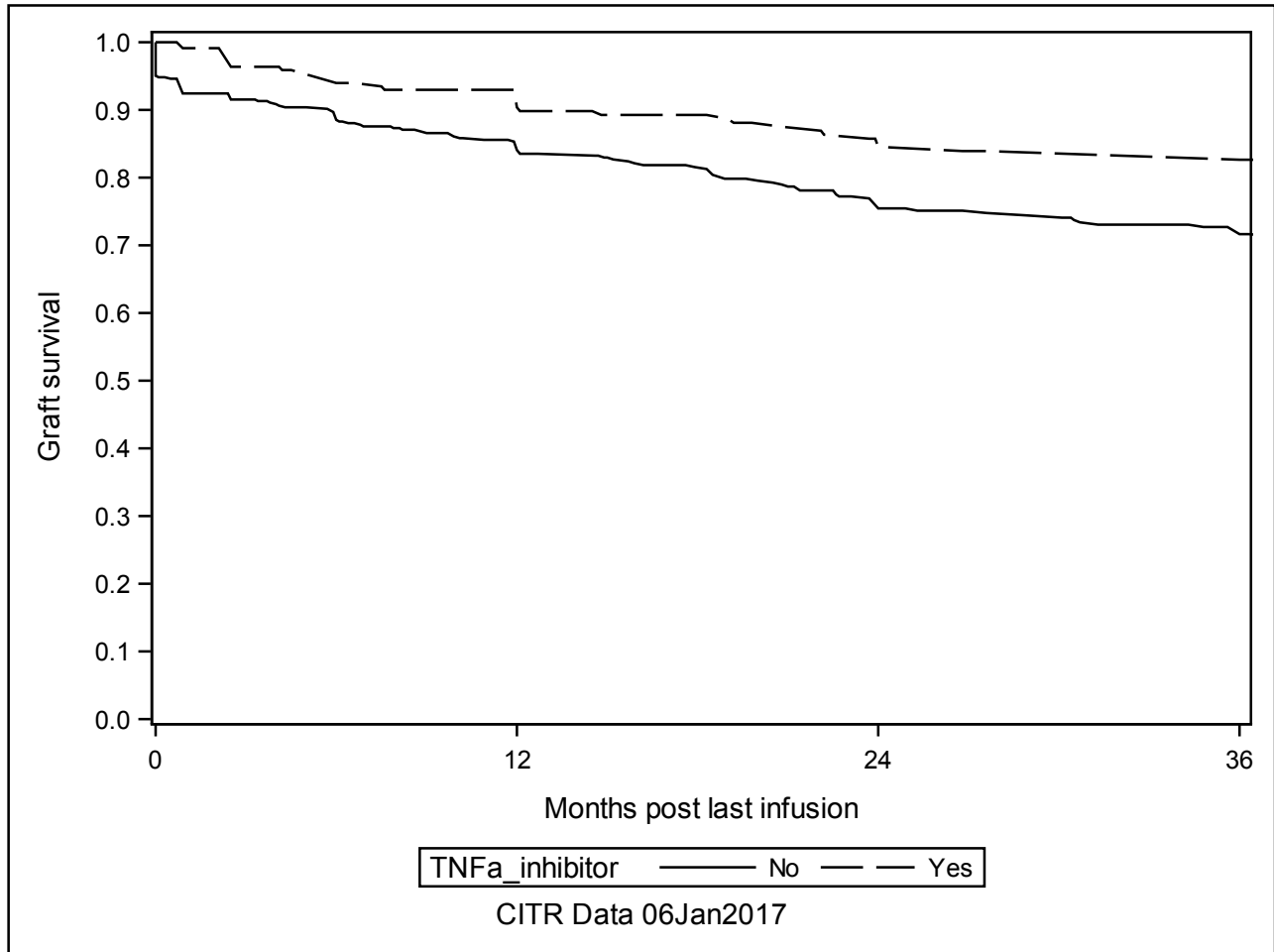
**The LIFETEST Procedure**

---

Test of Equality over Strata

Test	Chi-Square	DF	Pr > Chi-Square
Log-Rank	13.7222	1	0.0002
Wilcoxon	13.0588	1	0.0003
-2Log(LR)	14.9072	1	0.0001

---



**A-3a ITA Retention of C-peptide post last infusion (K-M plots) Significant Predictors**

Islets\_total\_endotoxin

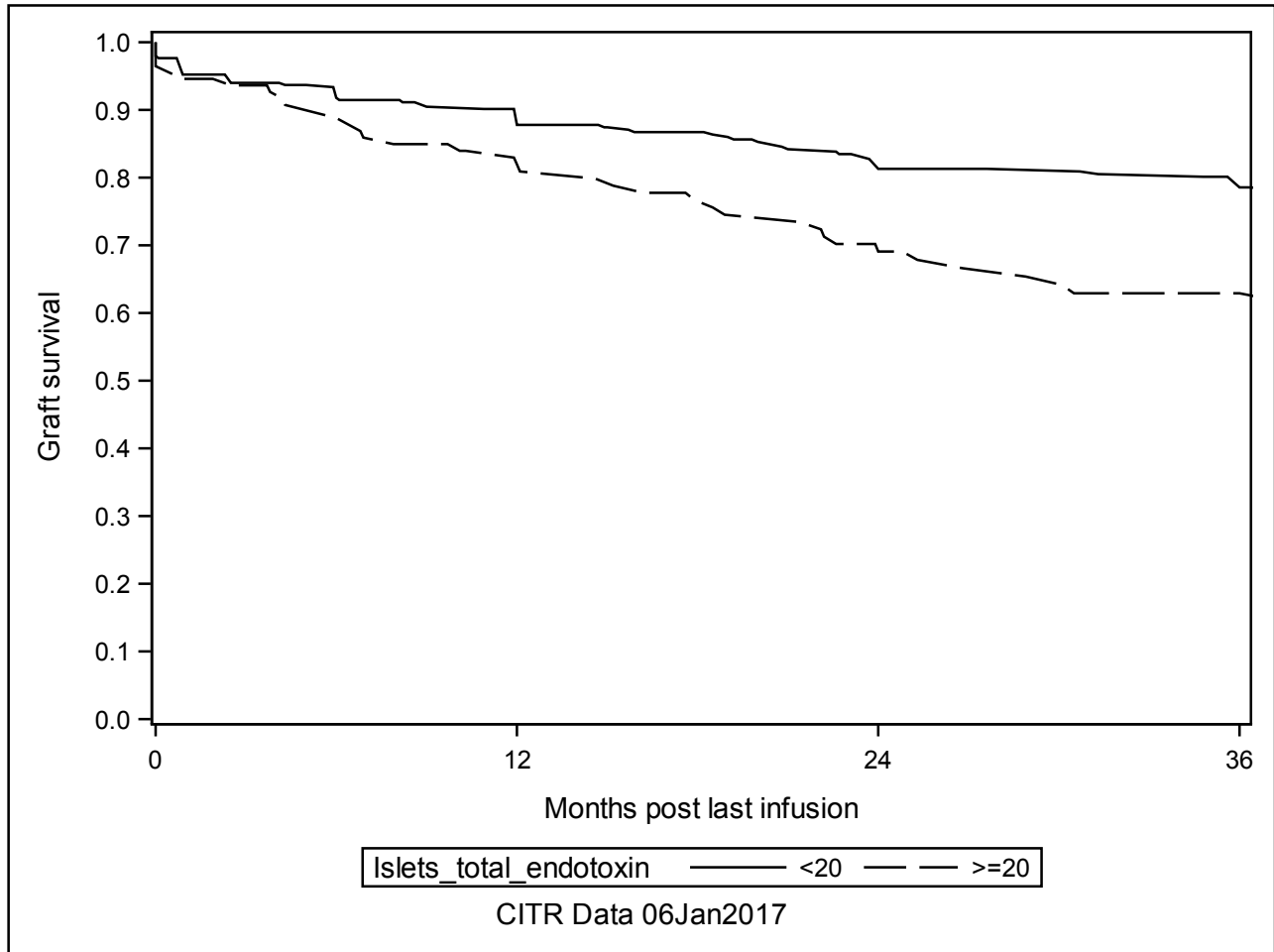
**The LIFETEST Procedure**

---

Test of Equality over Strata

Test	Chi-Square	DF	Pr >
			Chi-Square
Log-Rank	16.4950	1	<.0001
Wilcoxon	11.7871	1	0.0006
-2Log(LR)	12.9426	1	0.0003

---

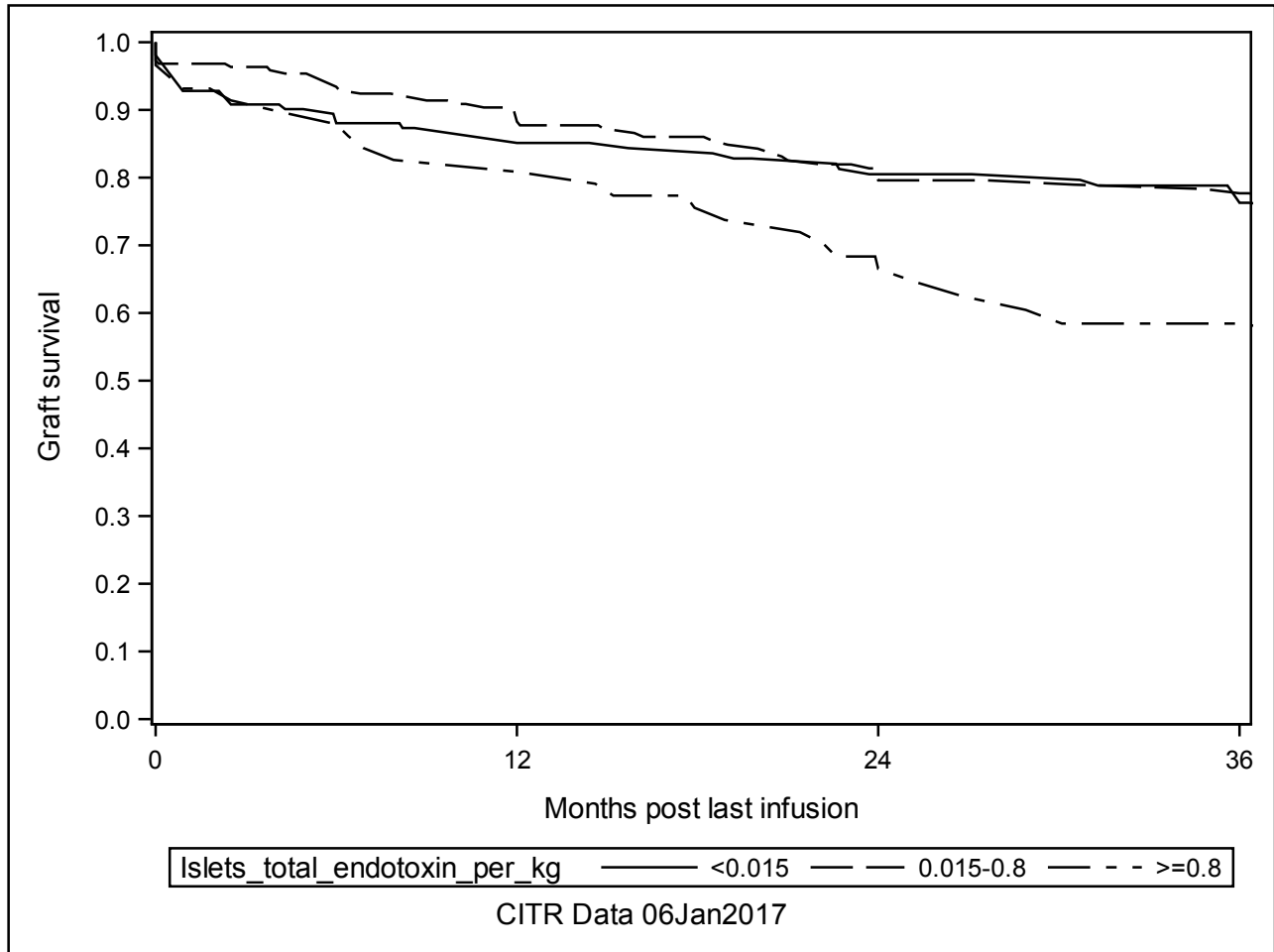


**A-3a ITA Retention of C-peptide post last infusion (K-M plots) Significant Predictors**

Islets\_total\_endotoxin\_per\_kg

**The LIFETEST Procedure**

Test of Equality over Strata			
Test	Chi-Square	DF	Pr > Chi-Square
Log-Rank	12.4760	2	0.0020
Wilcoxon	8.7107	2	0.0128
-2Log(LR)	8.5270	2	0.0141



**A-3a ITA Retention of C-peptide post last infusion (K-M plots) Significant Predictors**

Islets\_percent\_trapped

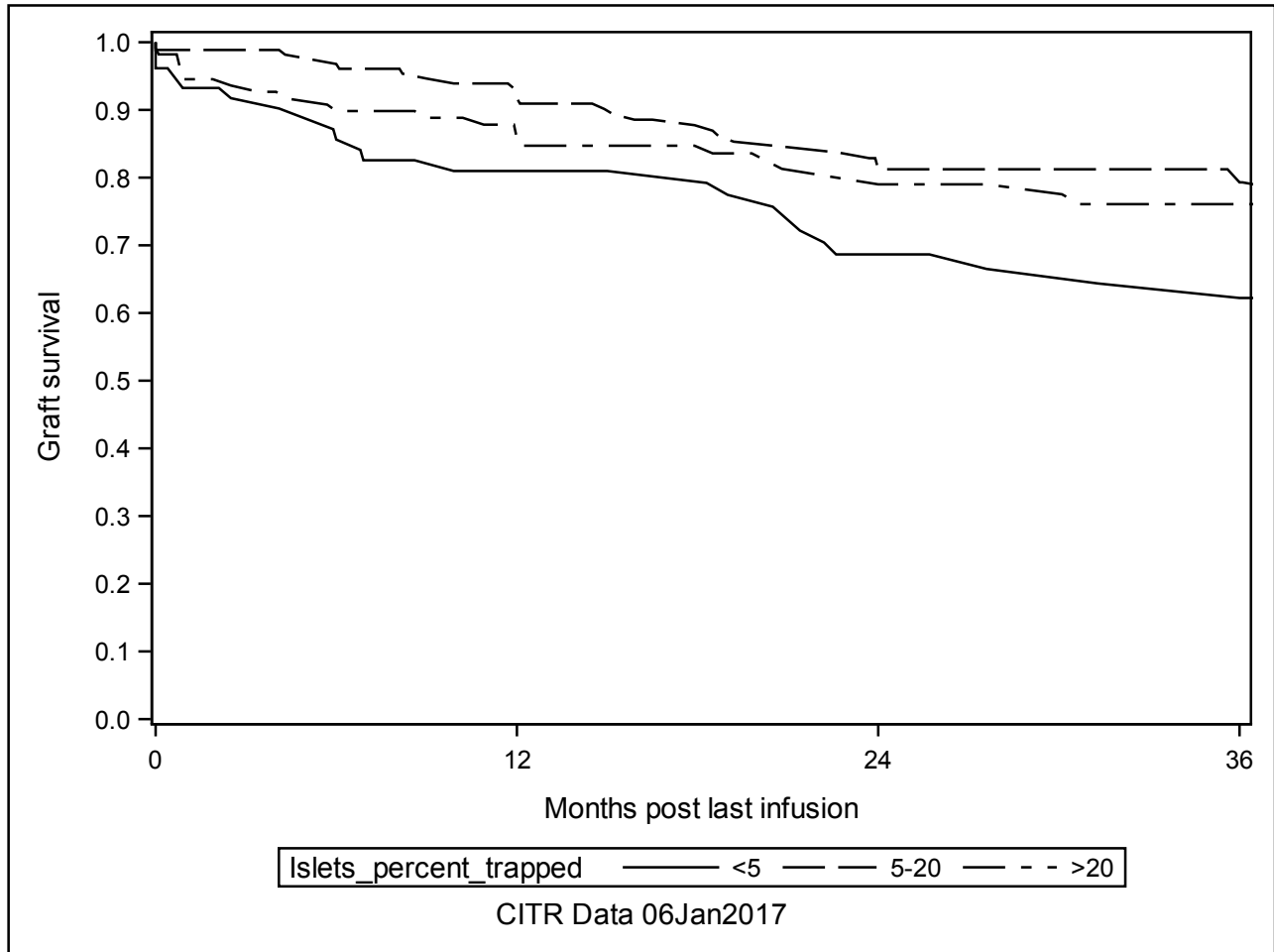
**The LIFETEST Procedure**

---

Test of Equality over Strata

Test	Chi-Square	DF	Pr > Chi-Square
Log-Rank	6.1120	2	0.0471
Wilcoxon	6.7119	2	0.0349
-2Log(LR)	5.8769	2	0.0529

---



**A-3a ITA Retention of C-peptide post last infusion (K-M plots) Significant Predictors**

Total\_infusions

**The LIFETEST Procedure**

Test of Equality over Strata			
Test	Chi-Square	DF	Pr > Chi-Square
Log-Rank	30.6293	5	<.0001
Wilcoxon	53.7193	5	<.0001
-2Log(LR)*	29.7973	5	<.0001

Warning: -2Log(LR) test is questionable since some strata have no events.

