

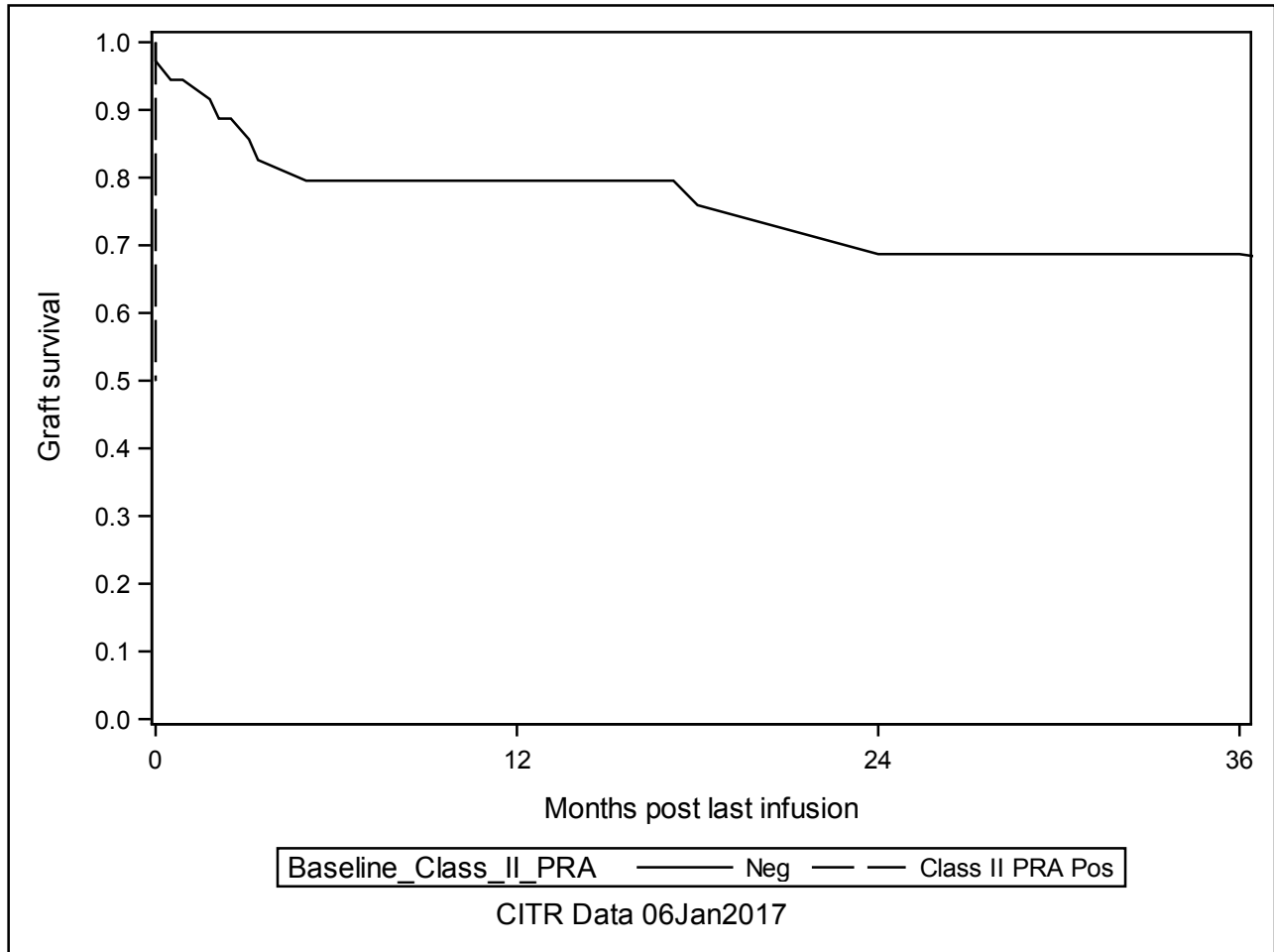
A-3b IAK Retention of C-peptide post last infusion (K-M plots) Significant Predictors

Baseline_Class_II_PRA

The LIFETEST Procedure

Test of Equality over Strata

Test	Chi-Square	DF	Pr > Chi-Square
Log-Rank	8.2508	1	0.0041
Wilcoxon	8.2508	1	0.0041
-2Log(LR)	.	.	.



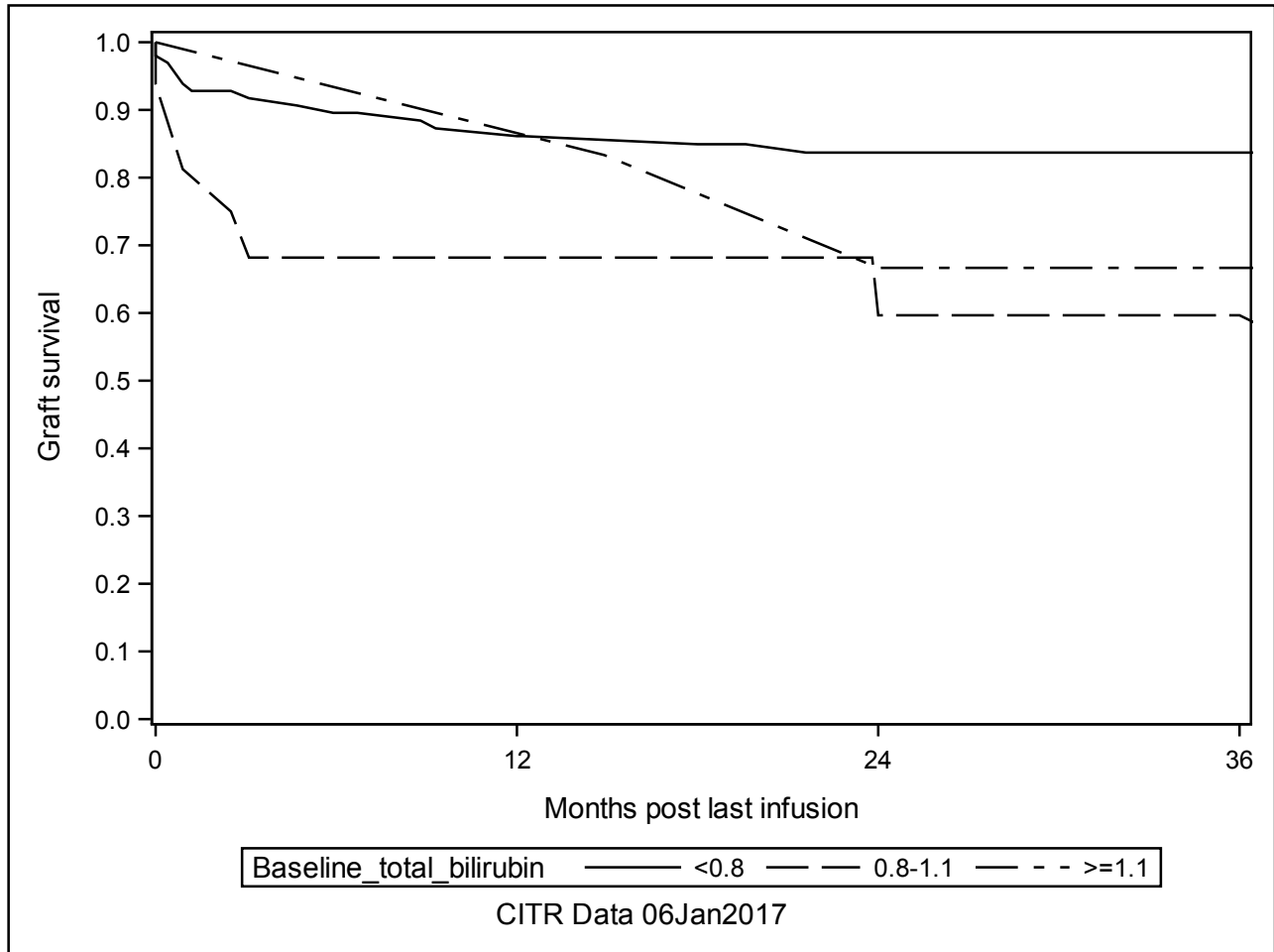
A-3b IAK Retention of C-peptide post last infusion (K-M plots) Significant Predictors

Baseline_total_bilirubin

The LIFETEST Procedure

Test of Equality over Strata

Test	Chi-Square	DF	Pr >
			Chi-Square
Log-Rank	11.1486	2	0.0038
Wilcoxon	7.8699	2	0.0195
-2Log(LR)	9.7523	2	0.0076



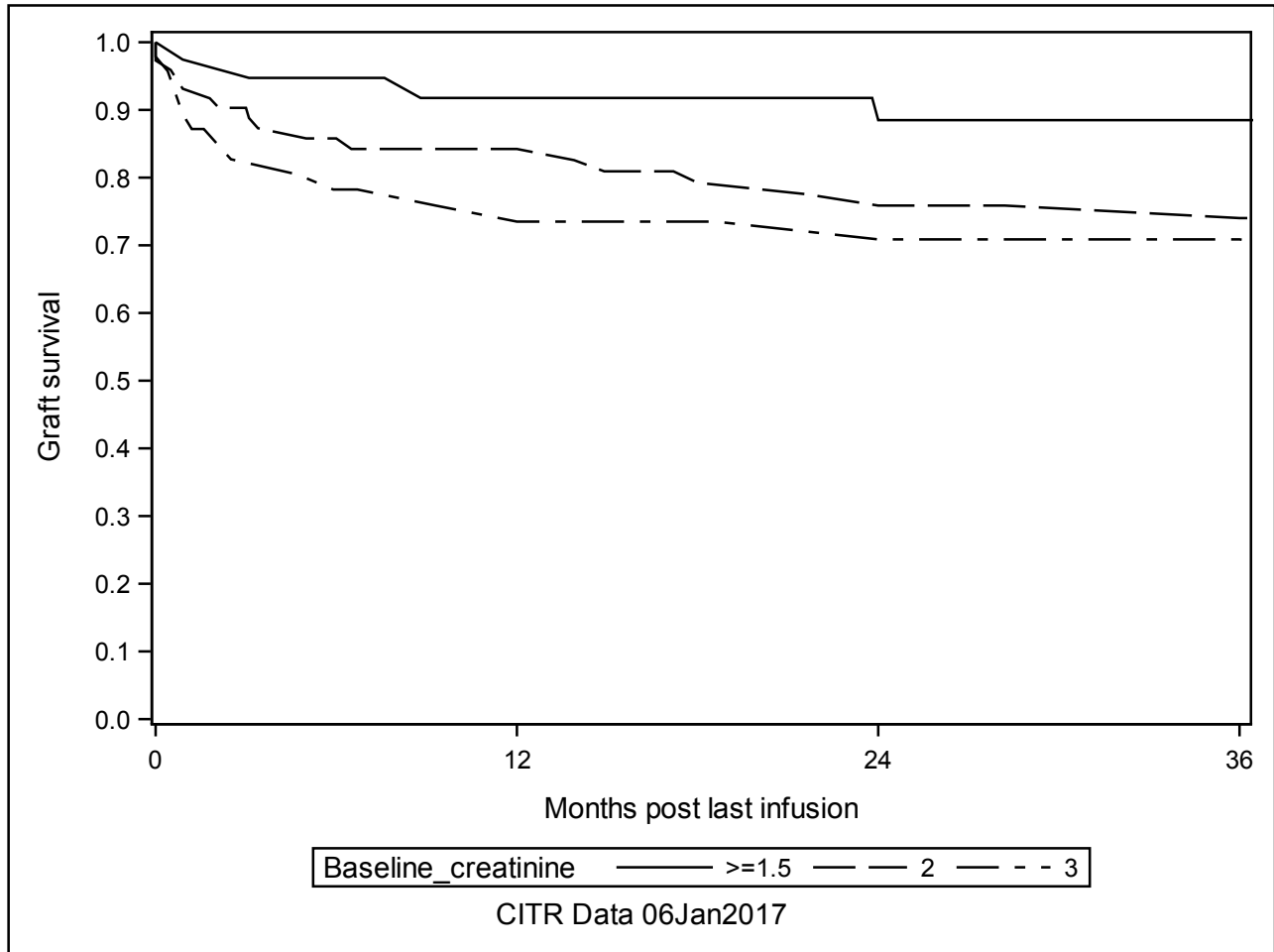
A-3b IAk Retention of C-peptide post last infusion (K-M plots) Significant Predictors

Baseline_creatinine

The LIFETEST Procedure

Test of Equality over Strata

Test	Chi-Square	DF	Pr > Chi-Square
Log-Rank	3.4606	2	0.1772
Wilcoxon	4.2604	2	0.1188
-2Log(LR)	2.7311	2	0.2552



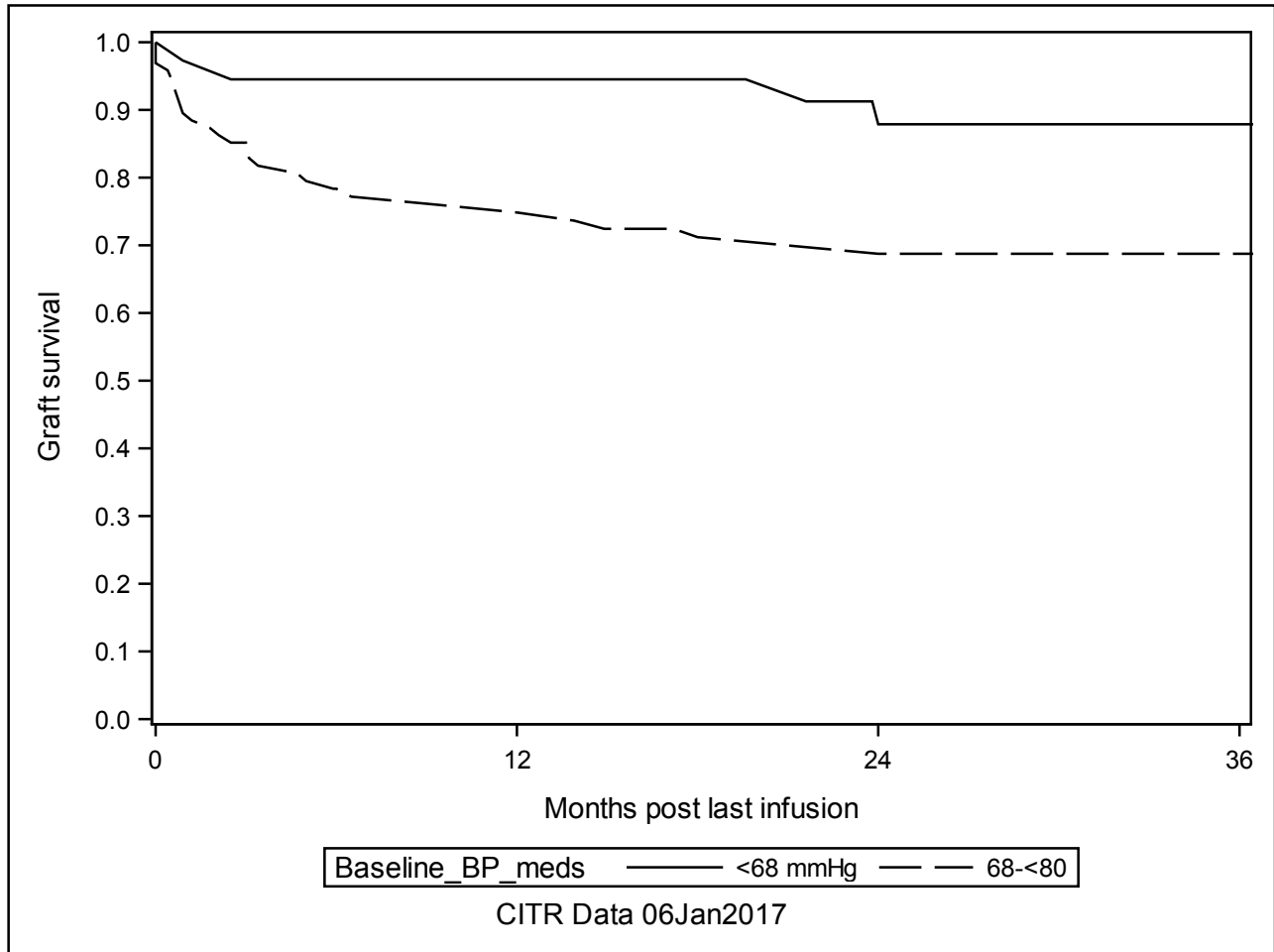
A-3b IAK Retention of C-peptide post last infusion (K-M plots) Significant Predictors

Baseline_BP_meds

The LIFETEST Procedure

Test of Equality over Strata

Test	Chi-Square	DF	Pr >
			Chi-Square
Log-Rank	5.7522	1	0.0165
Wilcoxon	5.7538	1	0.0165
-2Log(LR)	5.2351	1	0.0221



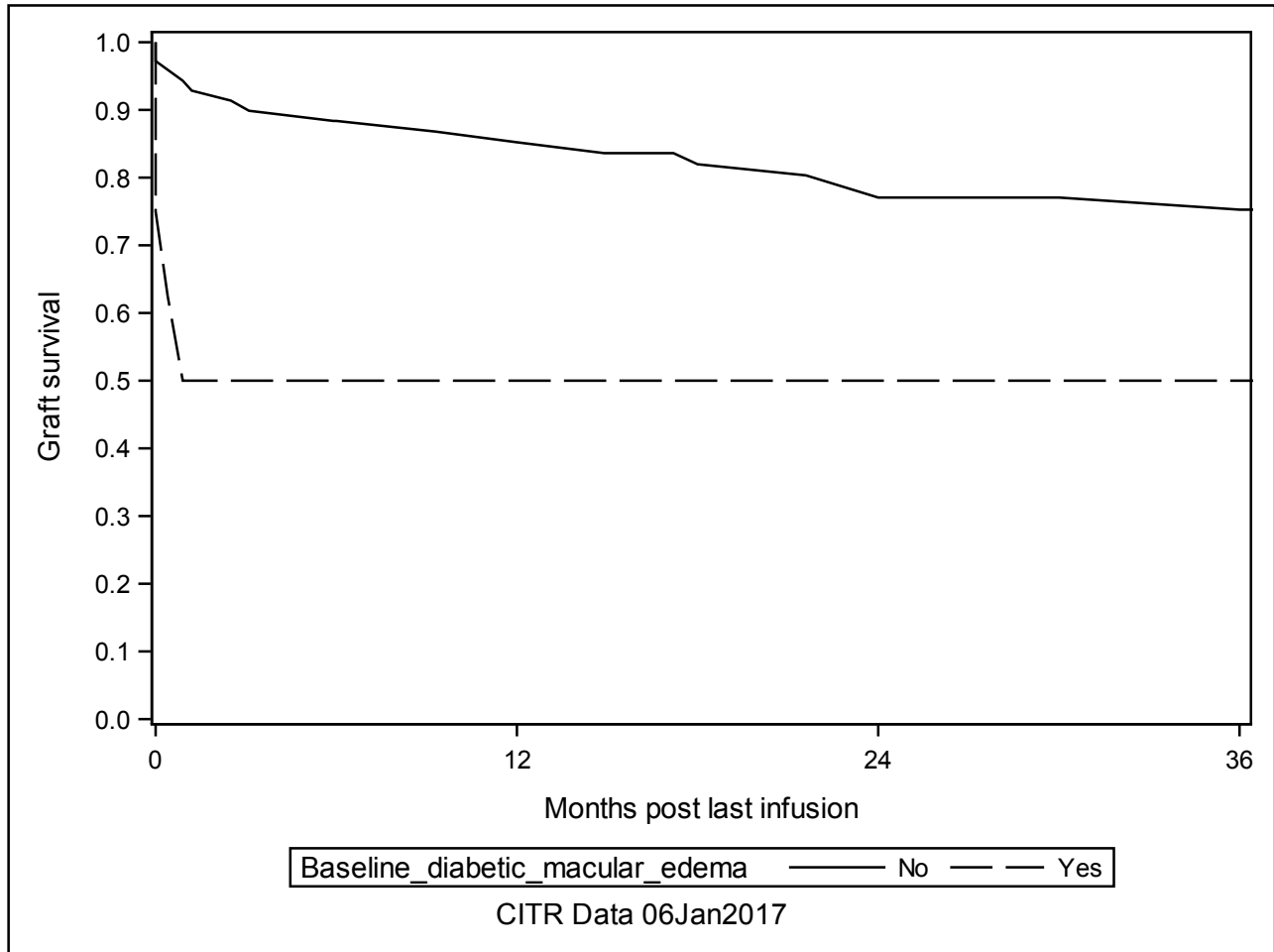
A-3b IAK Retention of C-peptide post last infusion (K-M plots) Significant Predictors

Baseline_diabetic_macular_edema

The LIFETEST Procedure

Test of Equality over Strata

Test	Chi-Square	DF	Pr > Chi-Square
Log-Rank	6.7296	1	0.0095
Wilcoxon	9.2044	1	0.0024
-2Log(LR)	7.4234	1	0.0064



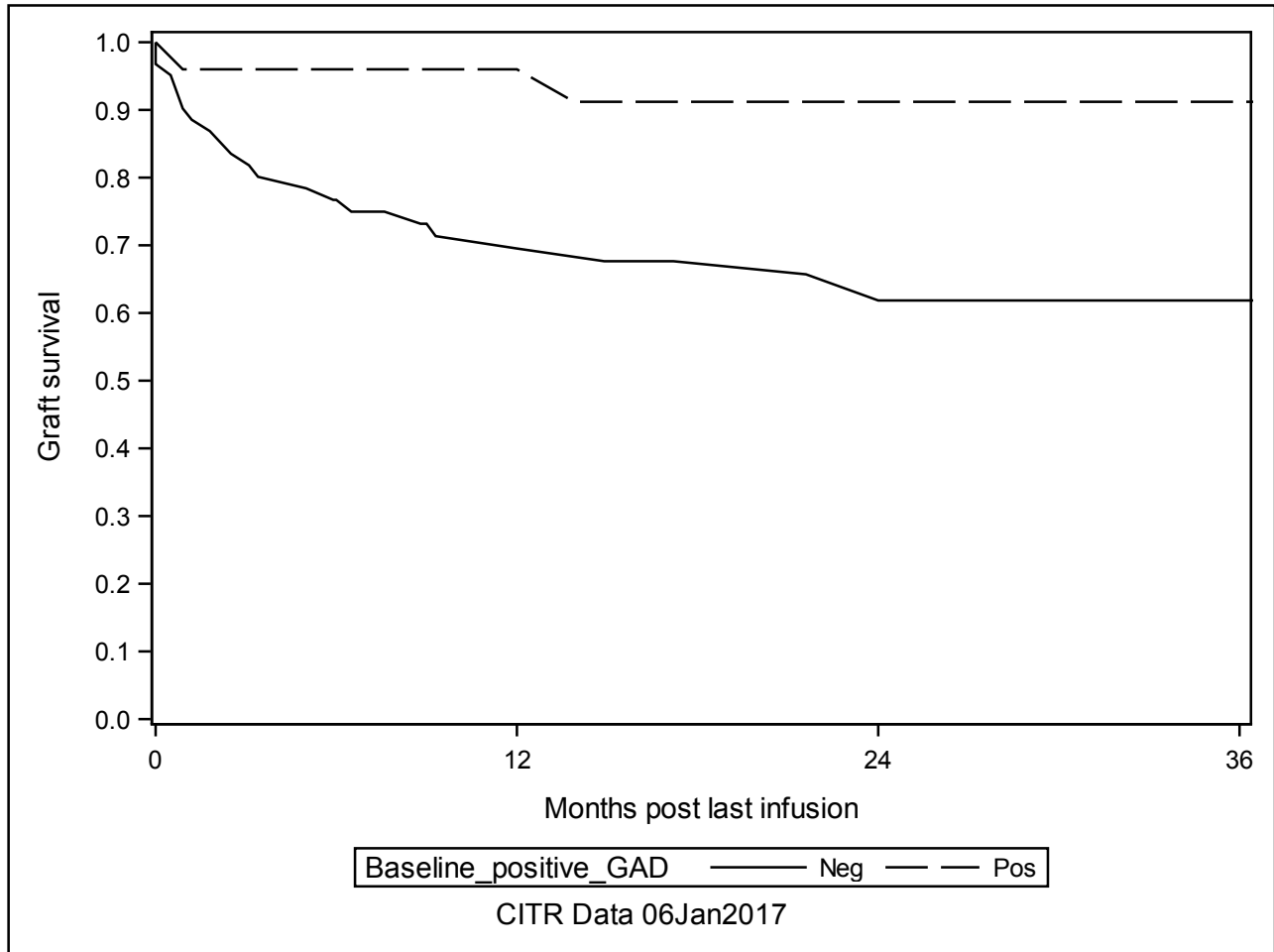
A-3b IAk Retention of C-peptide post last infusion (K-M plots) Significant Predictors

Baseline_positive_GAD

The LIFETEST Procedure

Test of Equality over Strata

Test	Chi-Square	DF	Pr >
			Chi-Square
Log-Rank	6.6874	1	0.0097
Wilcoxon	6.3156	1	0.0120
-2Log(LR)	10.0928	1	0.0015



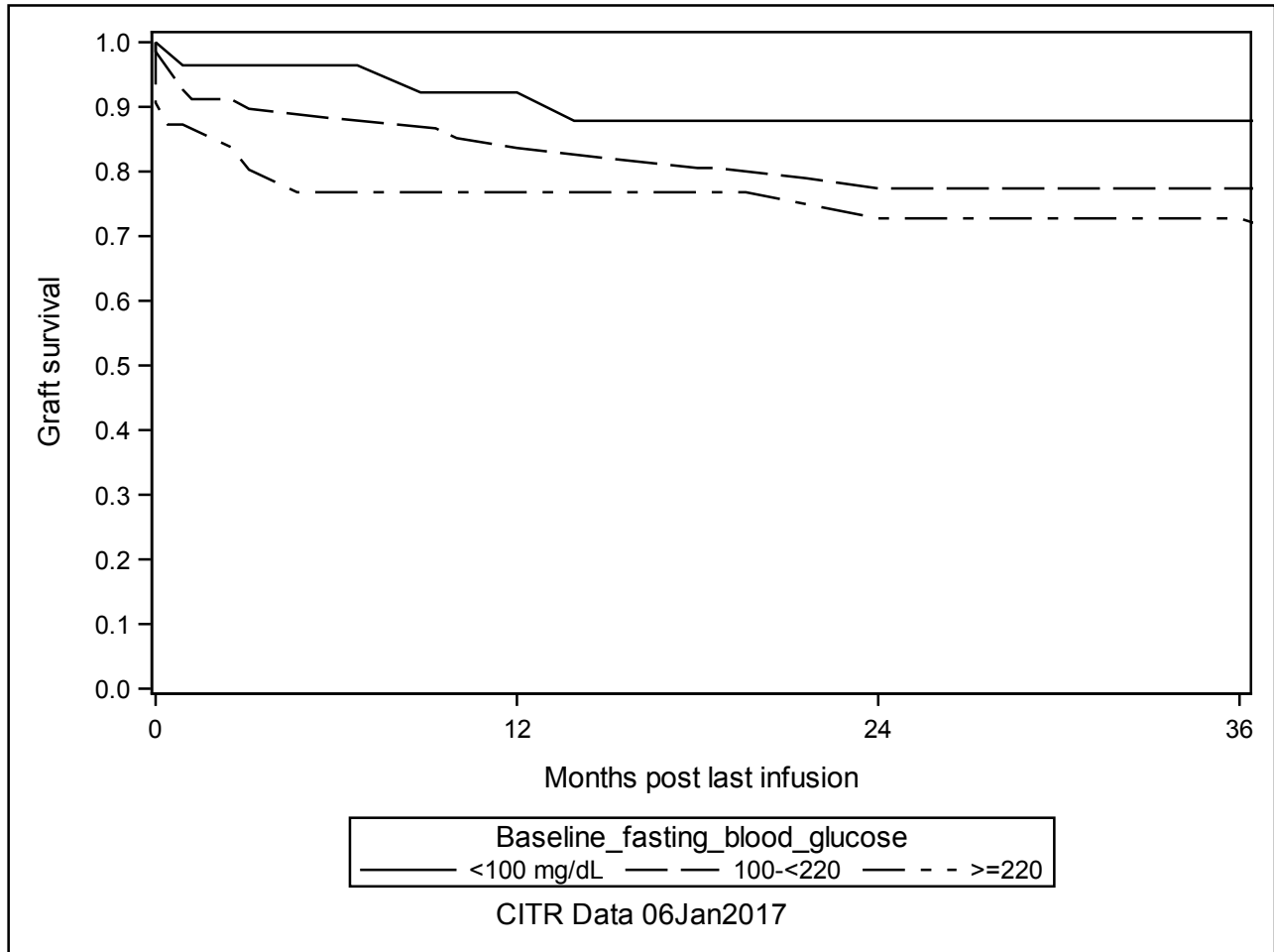
A-3b IAK Retention of C-peptide post last infusion (K-M plots) Significant Predictors

Baseline_fasting_blood_glucose

The LIFETEST Procedure

Test of Equality over Strata

Test	Chi-Square	DF	Pr > Chi-Square
Log-Rank	4.4155	2	0.1099
Wilcoxon	3.8257	2	0.1477
-2Log(LR)	6.2776	2	0.0433



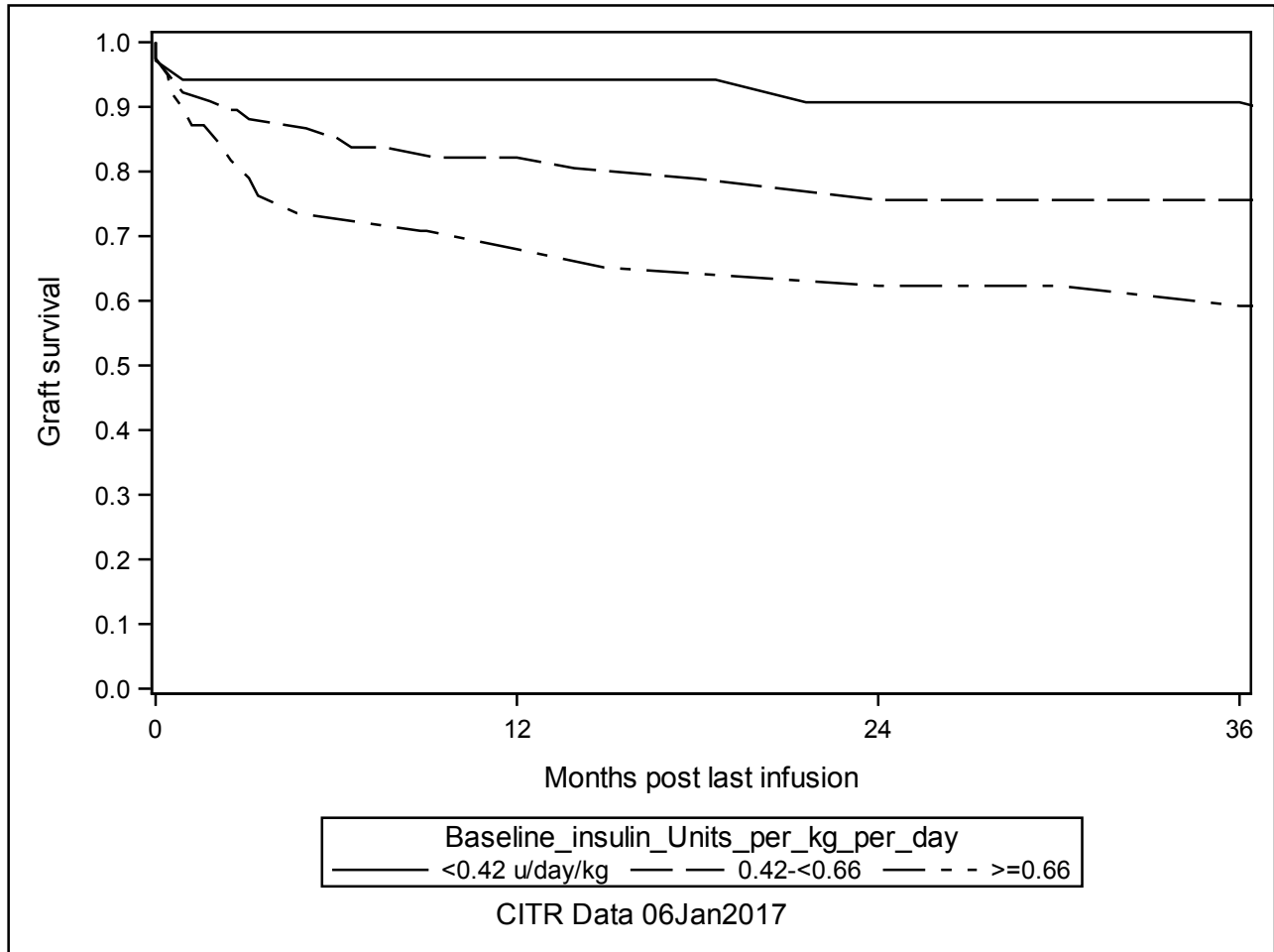
A-3b IAk Retention of C-peptide post last infusion (K-M plots) Significant Predictors

Baseline_insulin_Units_per_kg_per_day

The LIFETEST Procedure

Test of Equality over Strata

Test	Chi-Square	DF	Pr > Chi-Square
Log-Rank	6.9007	2	0.0317
Wilcoxon	7.1966	2	0.0274
-2Log(LR)	6.4278	2	0.0402



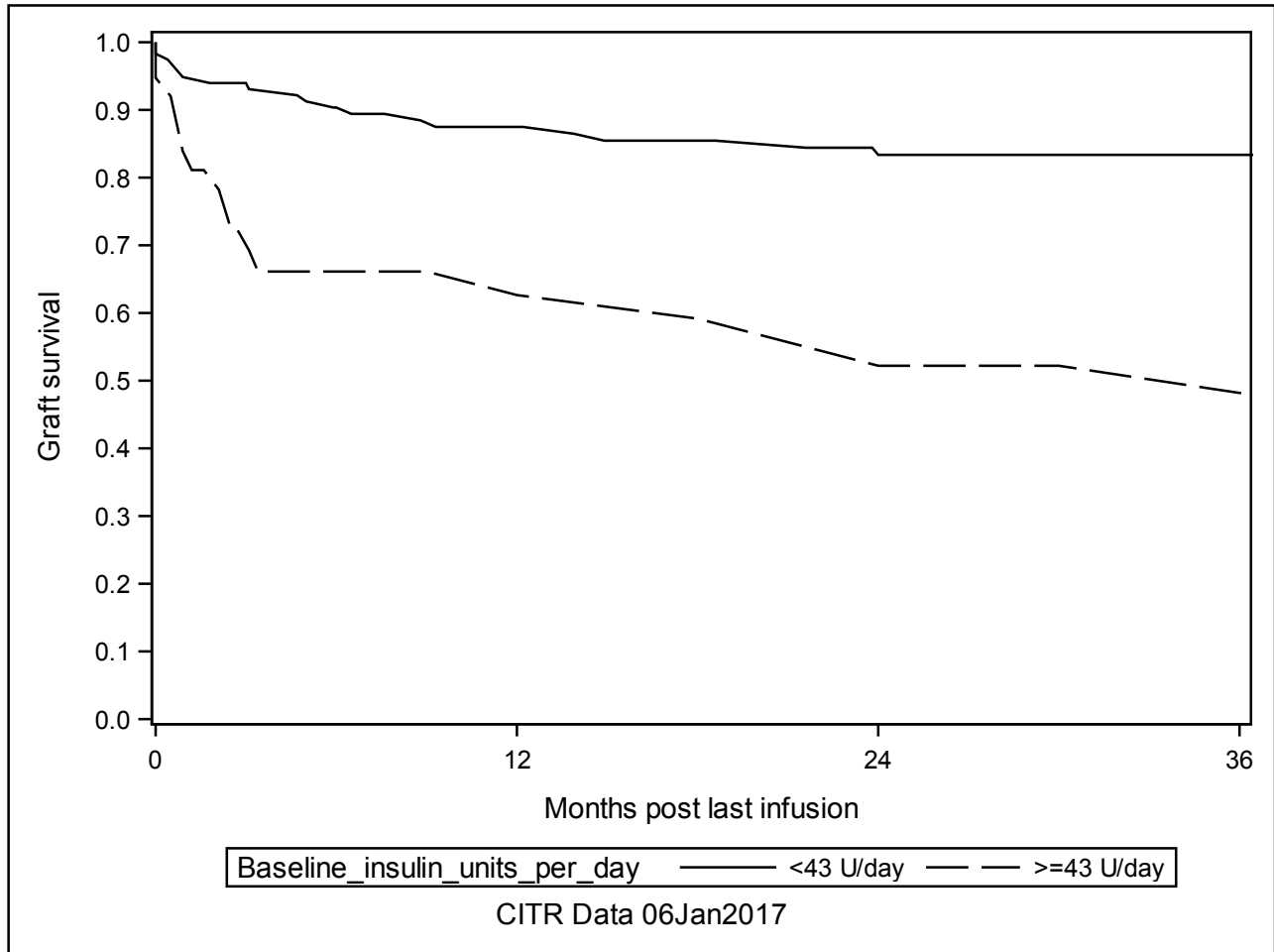
A-3b IAK Retention of C-peptide post last infusion (K-M plots) Significant Predictors

Baseline_insulin_units_per_day

The LIFETEST Procedure

Test of Equality over Strata

Test	Chi-Square	DF	Pr >
			Chi-Square
Log-Rank	16.6380	1	<.0001
Wilcoxon	16.5419	1	<.0001
-2Log(LR)	18.0756	1	<.0001



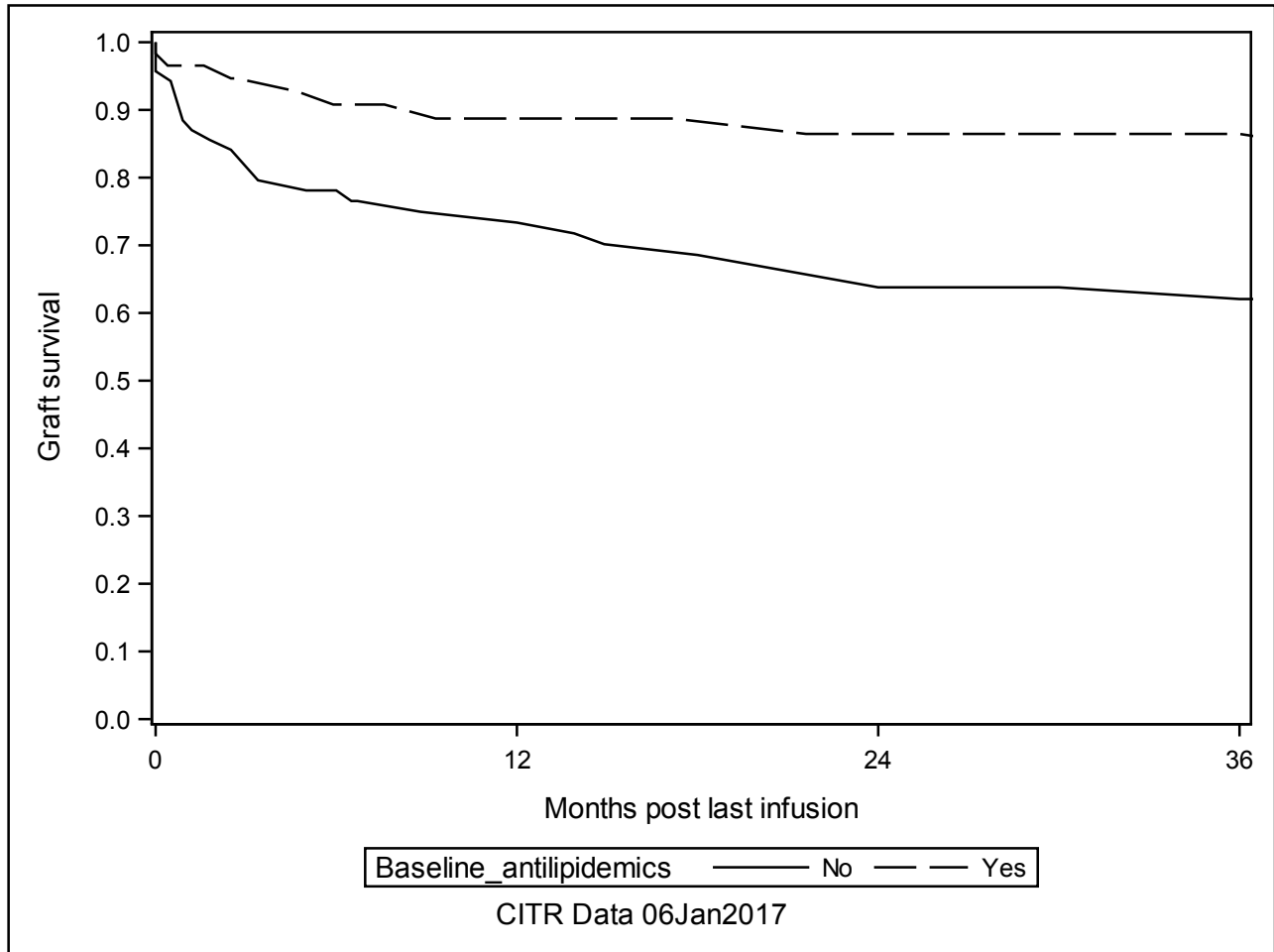
A-3b IAK Retention of C-peptide post last infusion (K-M plots) Significant Predictors

Baseline_antilipidemics

The LIFETEST Procedure

Test of Equality over Strata

Test	Chi-Square	DF	Pr > Chi-Square
Log-Rank	7.2696	1	0.0070
Wilcoxon	7.2850	1	0.0070
-2Log(LR)	7.5321	1	0.0061



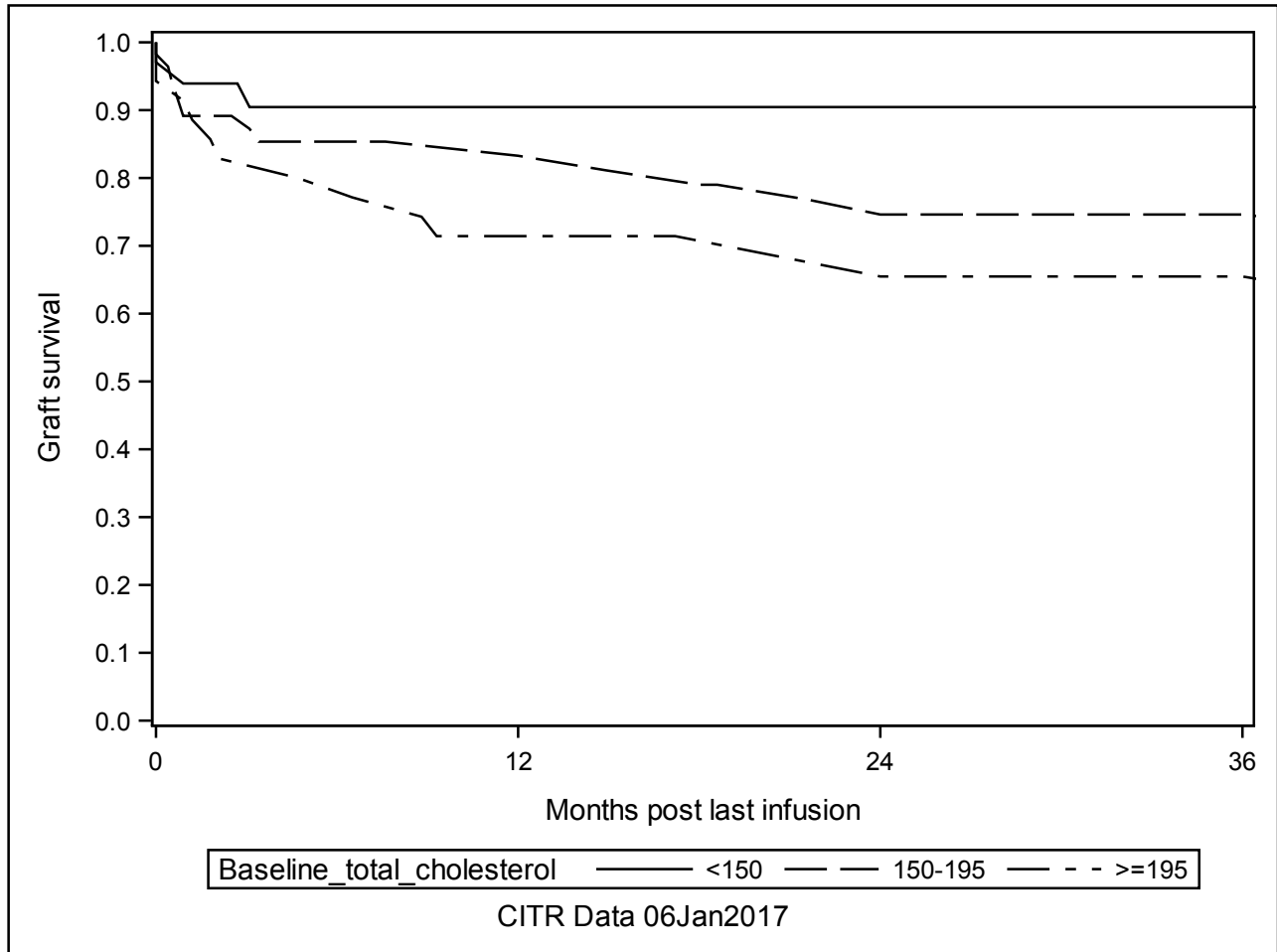
A-3b IAK Retention of C-peptide post last infusion (K-M plots) Significant Predictors

Baseline_total_cholesterol

The LIFETEST Procedure

Test of Equality over Strata

Test	Chi-Square	DF	Pr > Chi-Square
Log-Rank	5.4091	2	0.0669
Wilcoxon	4.5497	2	0.1028
-2Log(LR)	5.5836	2	0.0613



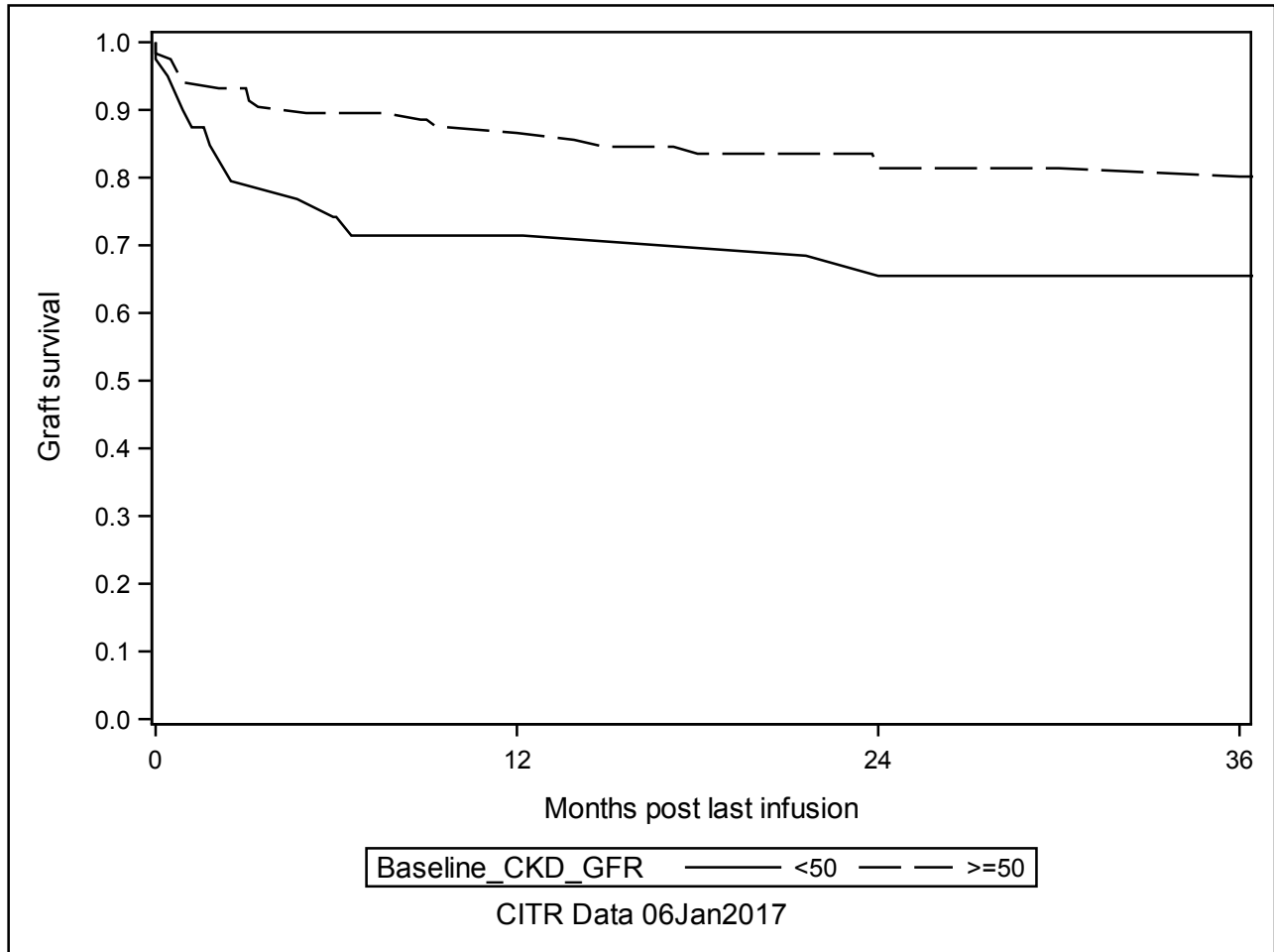
A-3b IAK Retention of C-peptide post last infusion (K-M plots) Significant Predictors

Baseline_CKD_GFR

The LIFETEST Procedure

Test of Equality over Strata

Test	Chi-Square	DF	Pr > Chi-Square
Log-Rank	3.2586	1	0.0710
Wilcoxon	4.2018	1	0.0404
-2Log(LR)	3.8813	1	0.0488



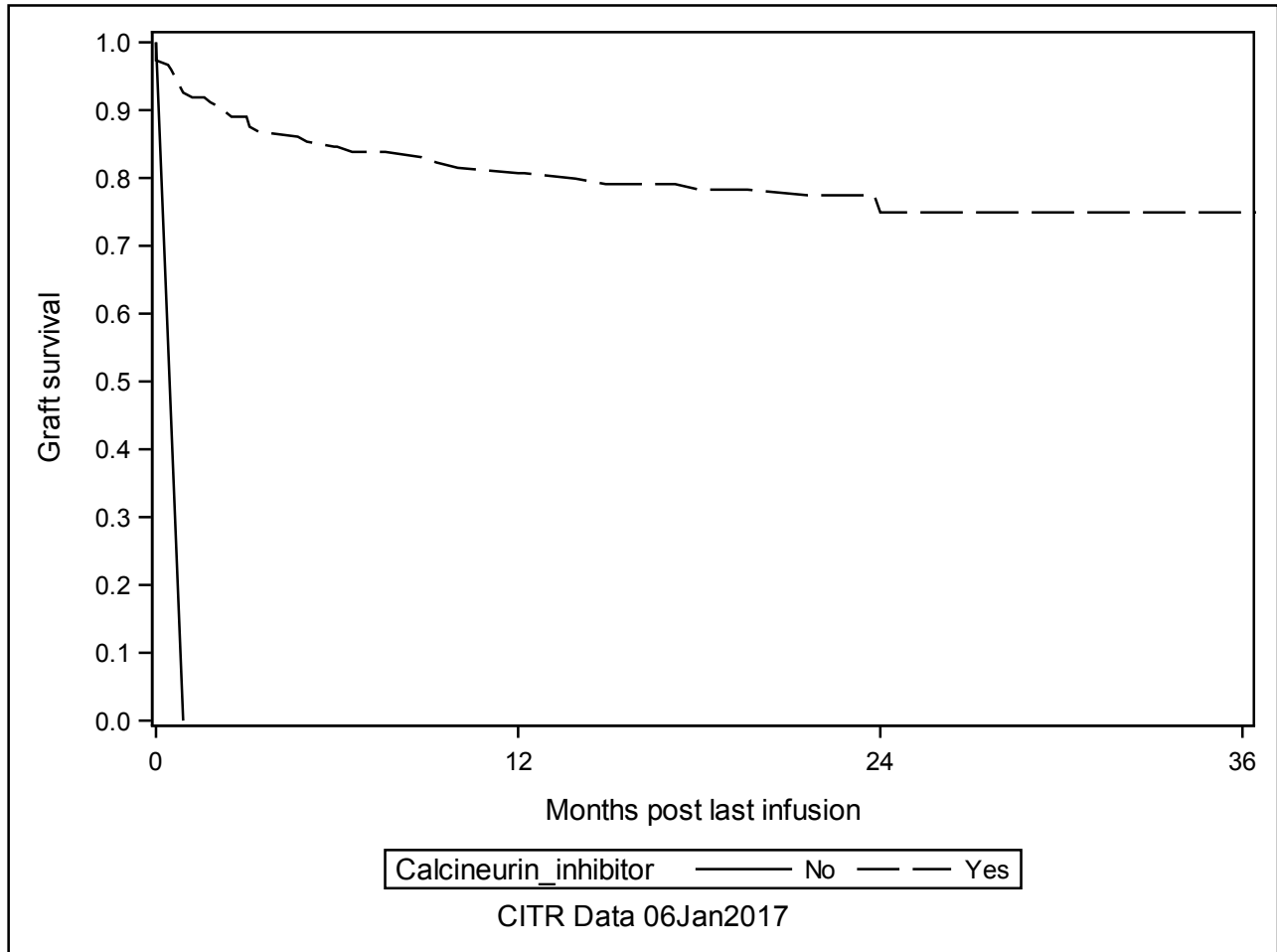
A-3b IAK Retention of C-peptide post last infusion (K-M plots) Significant Predictors

Calcineurin_inhibitor

The LIFETEST Procedure

Test of Equality over Strata

Test	Chi-Square	DF	Pr > Chi-Square
Log-Rank	10.5314	1	0.0012
Wilcoxon	9.9823	1	0.0016
-2Log(LR)	8.3663	1	0.0038



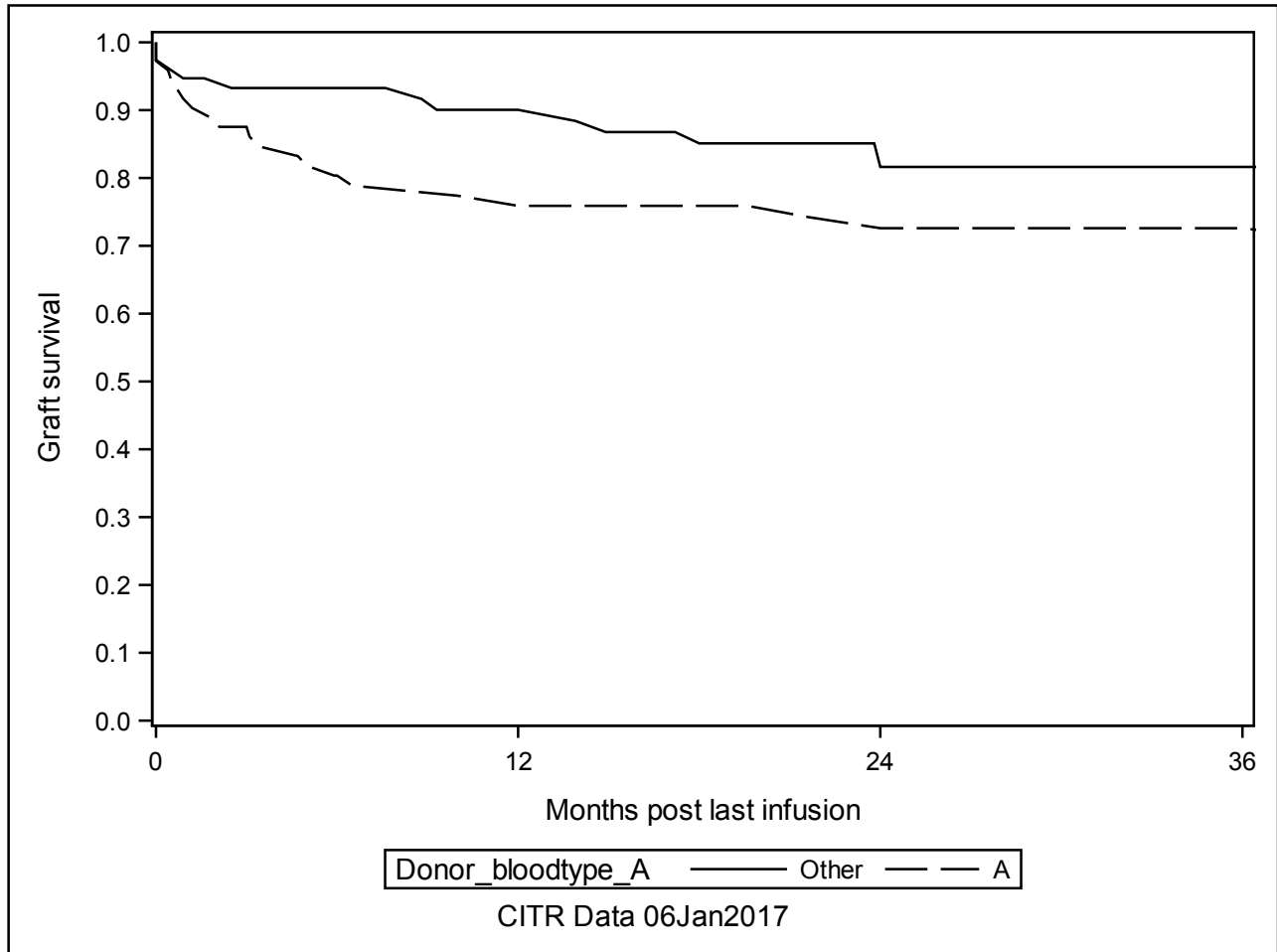
A-3b IAK Retention of C-peptide post last infusion (K-M plots) Significant Predictors

Donor_bloodtype_A

The LIFETEST Procedure

Test of Equality over Strata

Test	Chi-Square	DF	Pr >
			Chi-Square
Log-Rank	3.2690	1	0.0706
Wilcoxon	3.1097	1	0.0778
-2Log(LR)	4.3569	1	0.0369



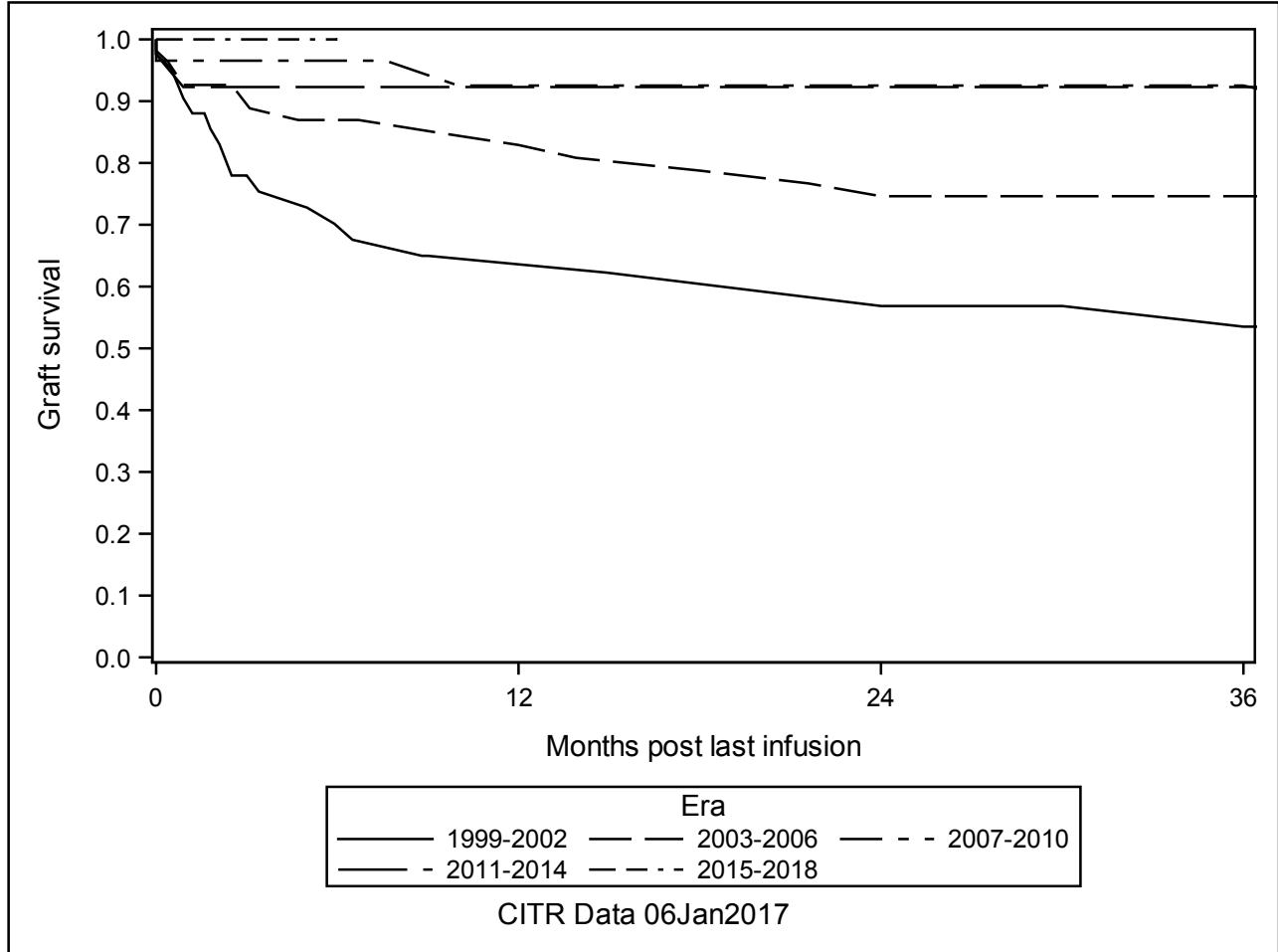
A-3b IAK Retention of C-peptide post last infusion (K-M plots) Significant Predictors

Era

The LIFETEST Procedure

Test of Equality over Strata			
Test	Chi-Square	DF	Pr > Chi-Square
Log-Rank	16.3695	4	0.0026
Wilcoxon	15.4999	4	0.0038
-2Log(LR)*	11.0921	4	0.0255

Warning: -2Log(LR) test is questionable since some strata have no events.



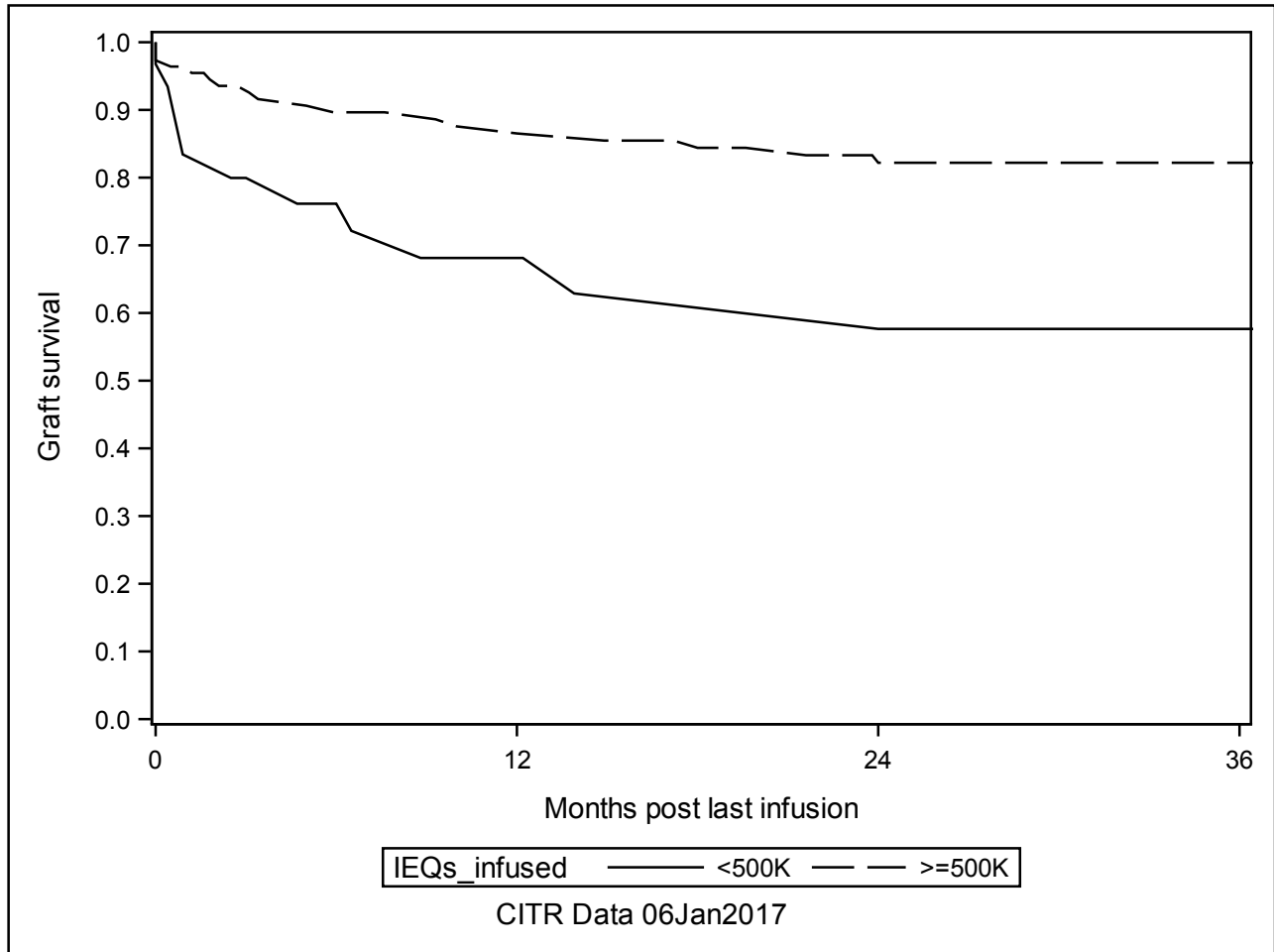
A-3b IAQ Retention of C-peptide post last infusion (K-M plots) Significant Predictors

IEQs_infused

The LIFETEST Procedure

Test of Equality over Strata

Test	Chi-Square	DF	Pr >
			Chi-Square
Log-Rank	7.1339	1	0.0076
Wilcoxon	7.4131	1	0.0065
-2Log(LR)	12.2792	1	0.0005



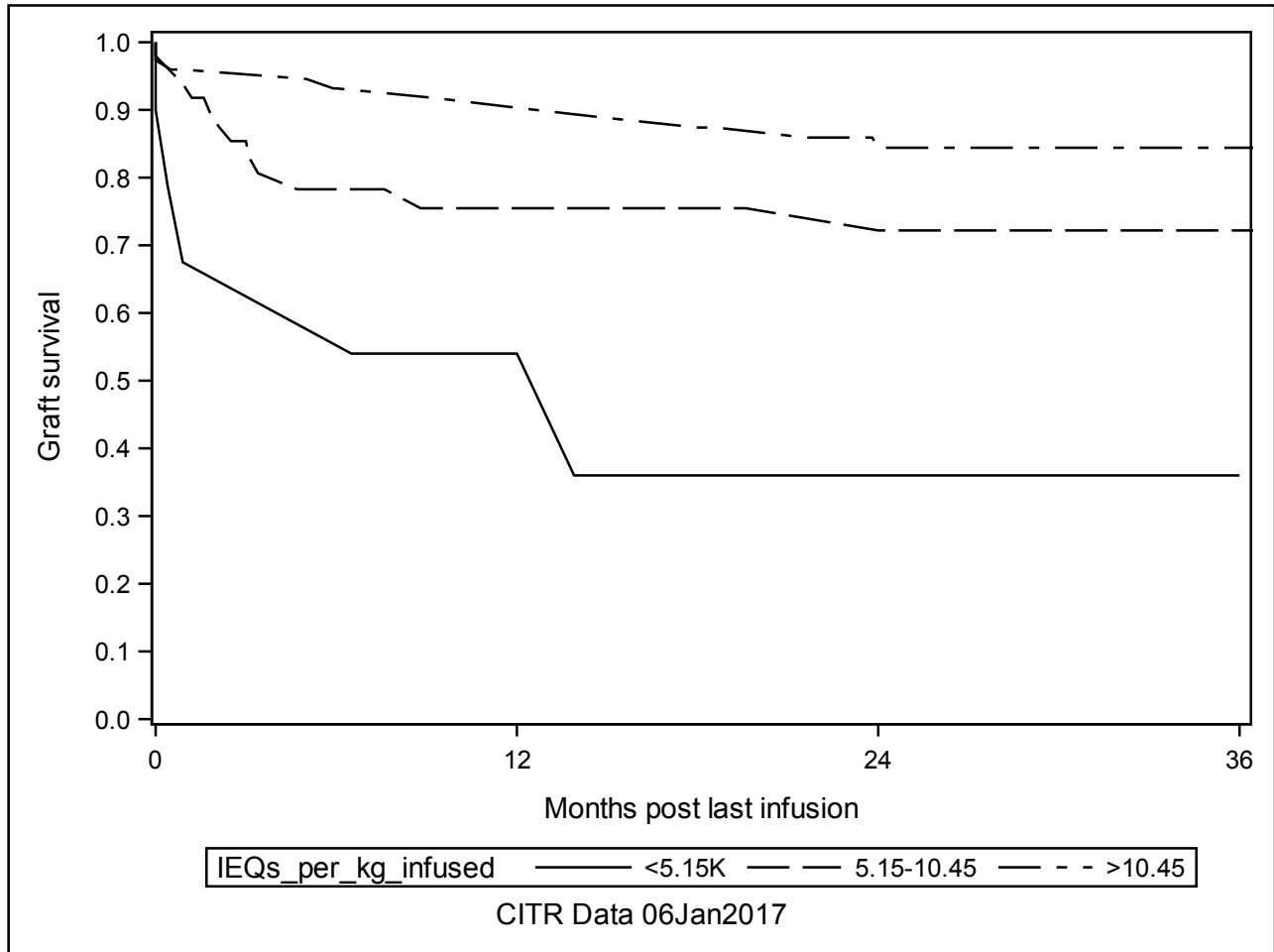
A-3b IAK Retention of C-peptide post last infusion (K-M plots) Significant Predictors

IEQs_per_kg_infused

The LIFETEST Procedure

Test of Equality over Strata

Test	Chi-Square	DF	Pr > Chi-Square
Log-Rank	12.8451	2	0.0016
Wilcoxon	13.5952	2	0.0011
-2Log(LR)	16.6894	2	0.0002



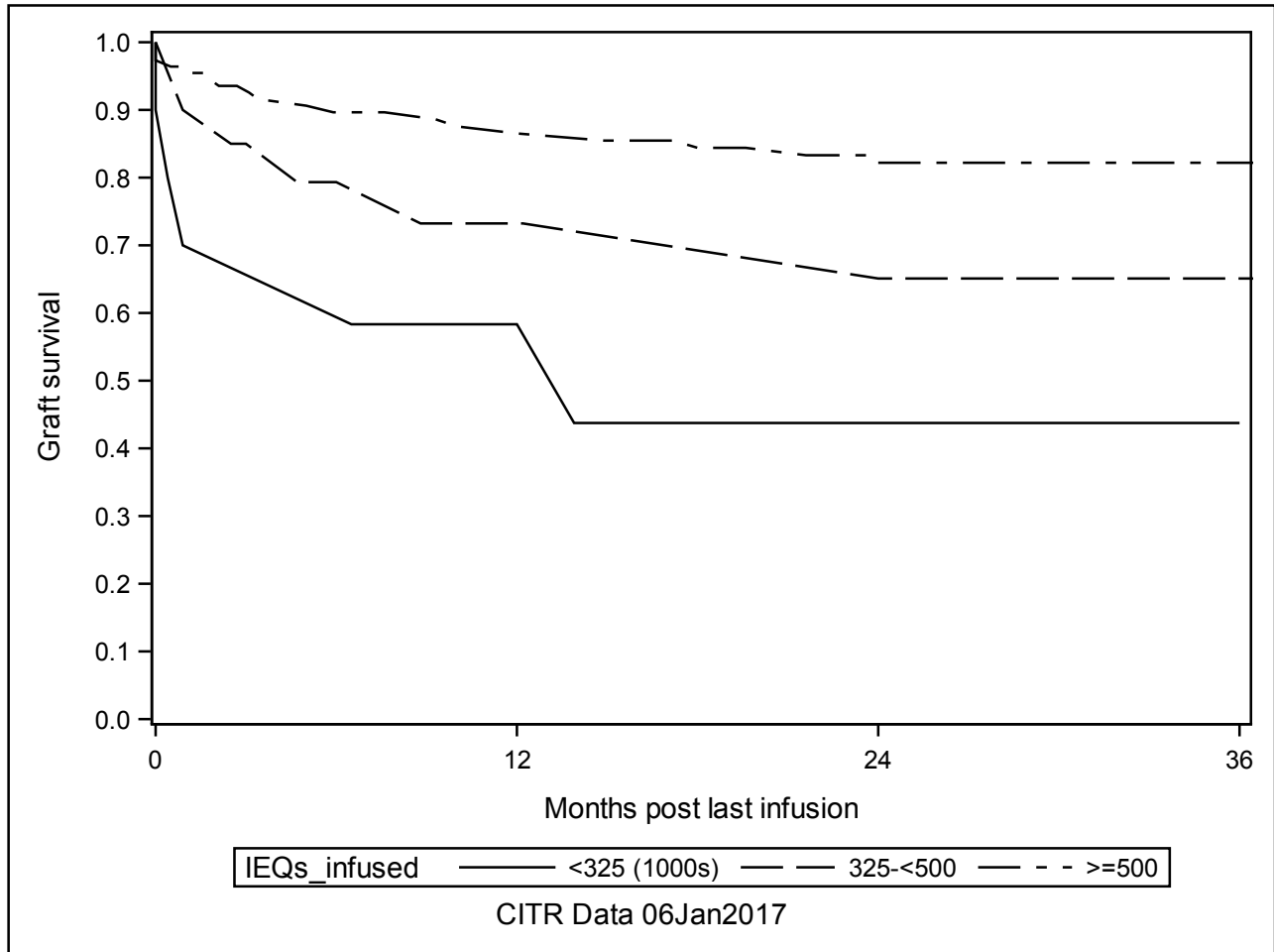
A-3b IAQ Retention of C-peptide post last infusion (K-M plots) Significant Predictors

IEQs_infused

The LIFETEST Procedure

Test of Equality over Strata

Test	Chi-Square	DF	Pr > Chi-Square
Log-Rank	10.6713	2	0.0048
Wilcoxon	11.0932	2	0.0039
-2Log(LR)	15.5396	2	0.0004



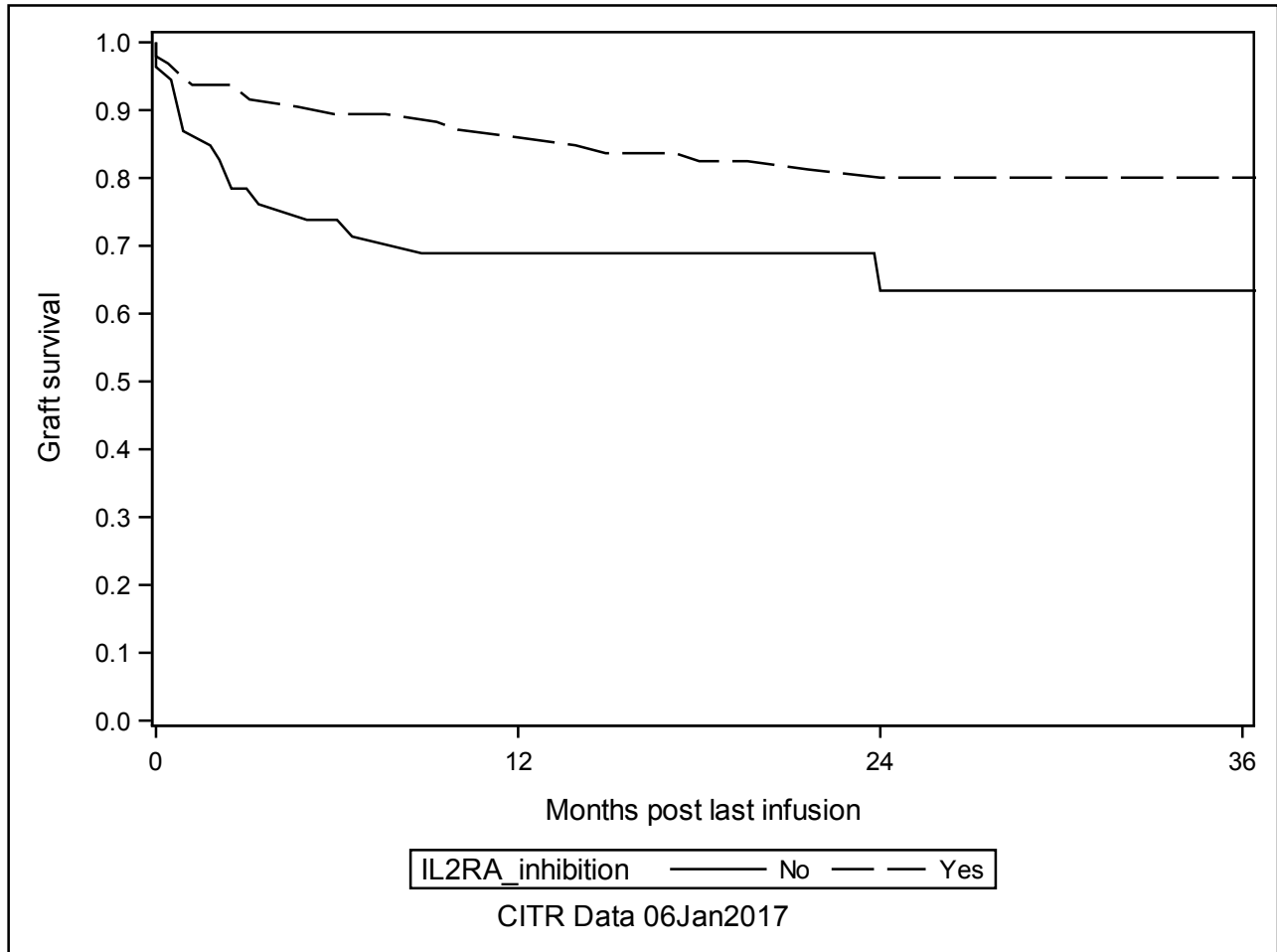
A-3b IAk Retention of C-peptide post last infusion (K-M plots) Significant Predictors

IL2RA_inhibition

The LIFETEST Procedure

Test of Equality over Strata

Test	Chi-Square	DF	Pr > Chi-Square
Log-Rank	4.4380	1	0.0351
Wilcoxon	5.4241	1	0.0199
-2Log(LR)	10.1766	1	0.0014



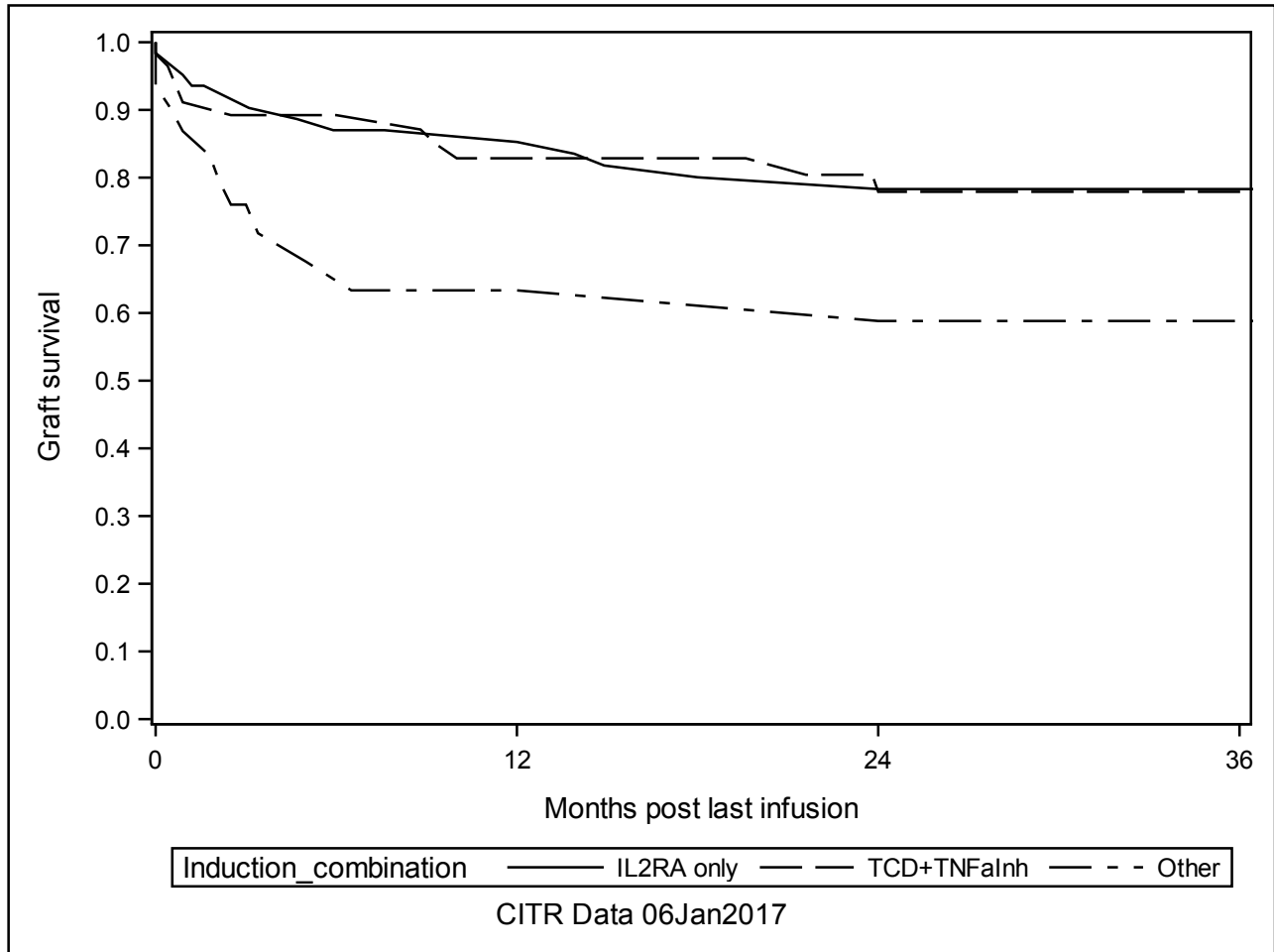
A-3b IAK Retention of C-peptide post last infusion (K-M plots) Significant Predictors

Induction_combination

The LIFETEST Procedure

Test of Equality over Strata

Test	Chi-Square	DF	Pr >
			Chi-Square
Log-Rank	4.8375	2	0.0890
Wilcoxon	5.7194	2	0.0573
-2Log(LR)	10.4039	2	0.0055



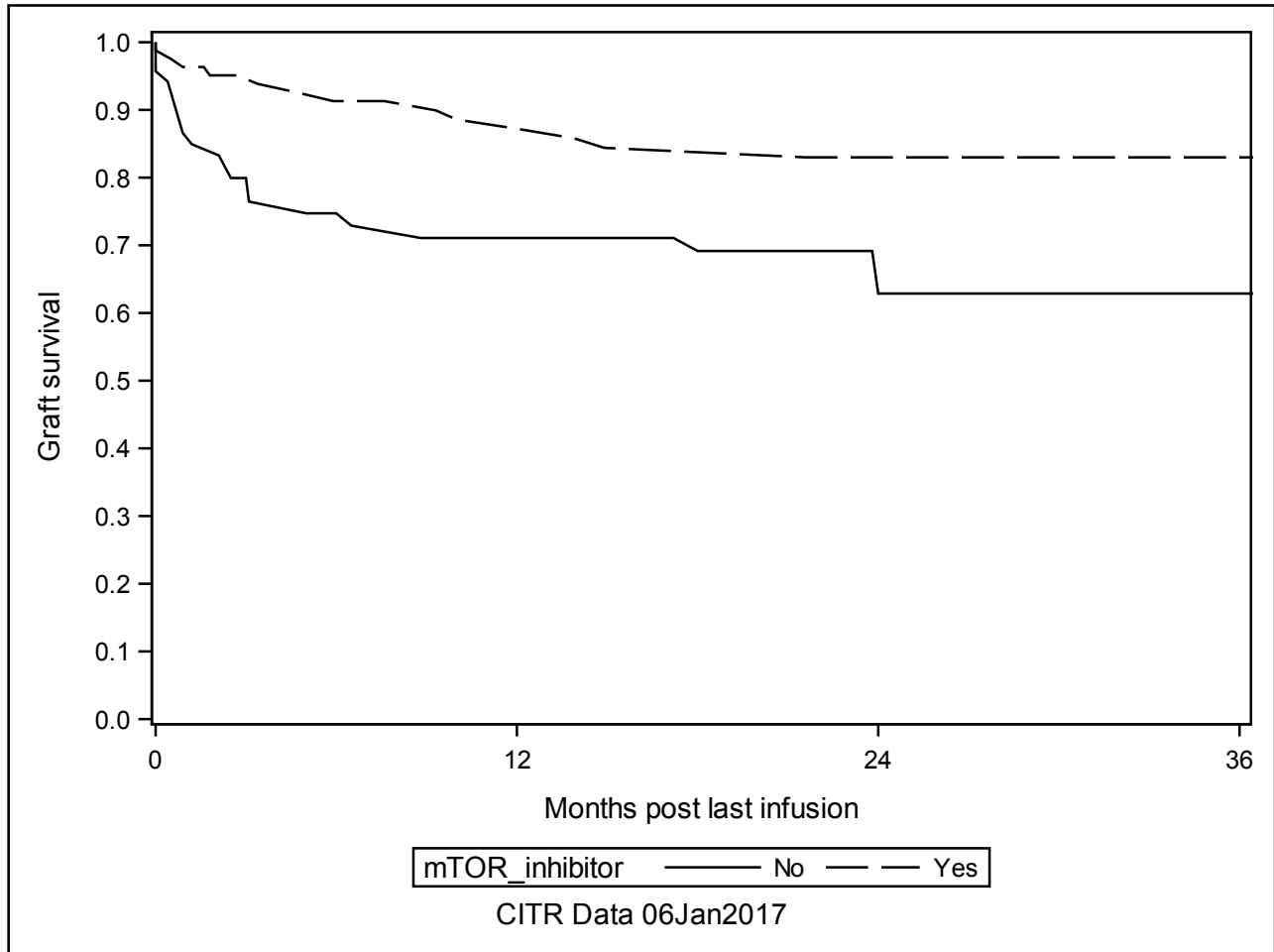
A-3b IAK Retention of C-peptide post last infusion (K-M plots) Significant Predictors

mTOR_inhibitor

The LIFETEST Procedure

Test of Equality over Strata

Test	Chi-Square	DF	Pr > Chi-Square
Log-Rank	8.3423	1	0.0039
Wilcoxon	8.6524	1	0.0033
-2Log(LR)	17.9892	1	<.0001



A-3b IAK Retention of C-peptide post last infusion (K-M plots) Significant Predictors

Total_infusions

The LIFETEST Procedure

Test of Equality over Strata

Test	Chi-Square	DF	Pr > Chi-Square
Log-Rank	17.8409	3	0.0005
Wilcoxon	18.3744	3	0.0004
-2Log(LR)	25.3946	3	<.0001

