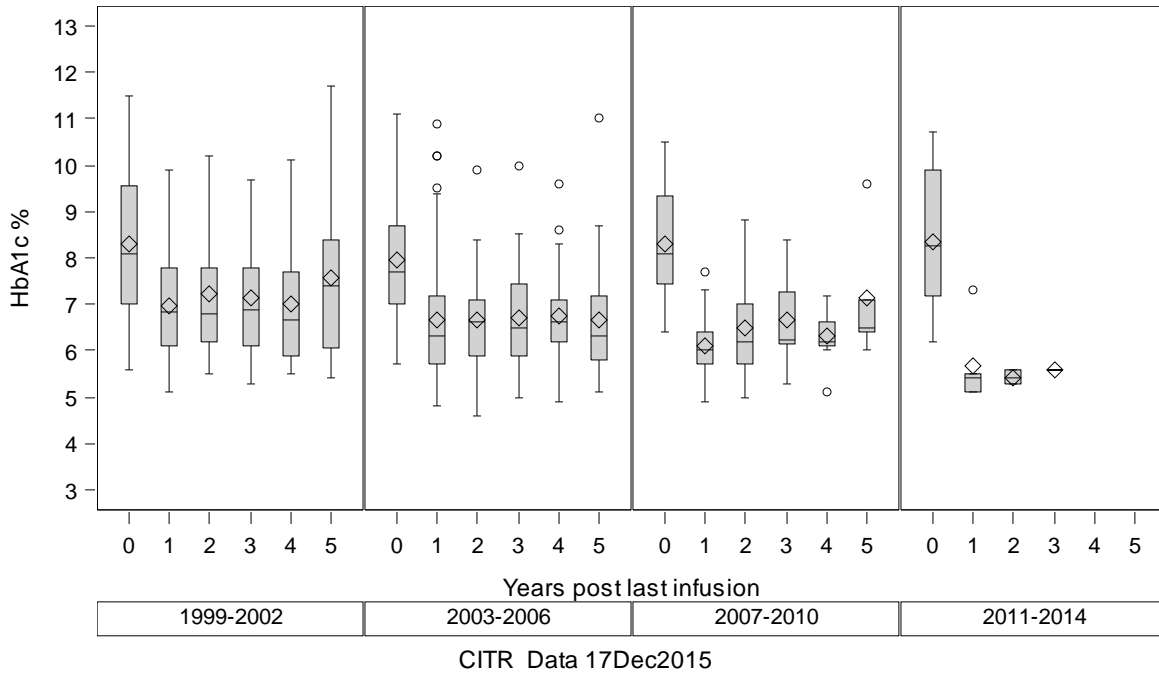


Exhibit A-11b. IAK HbA1c levels post last infusion (boxplots and generalized estimating equations)

HbA1c (%) by Era



The GENMOD Procedure

Analysis Of GEE Parameter Estimates

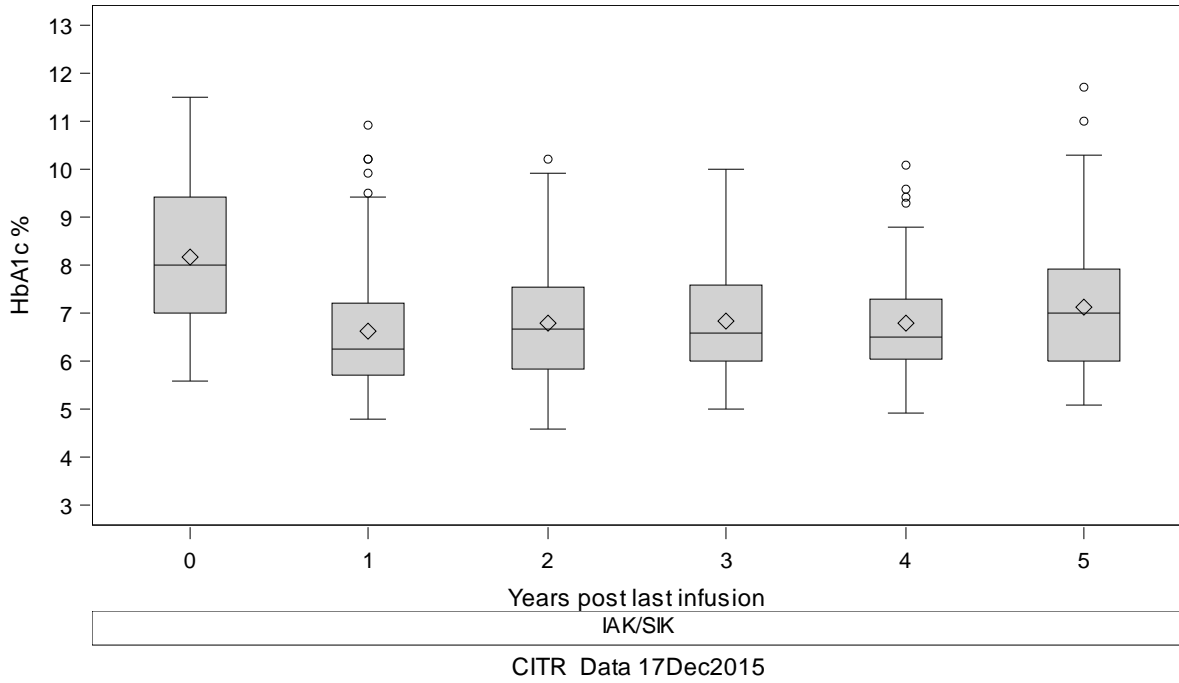
Empirical Standard Error Estimates

Parameter	Estimate	Standard Error	95% Confidence Limits		Z	Pr > Z
Intercept	2.0764	0.0334	2.0108	2.1419	62.11	<.0001
era	-0.0405	0.0150	-0.0700	-0.0111	-2.70	0.0069
yrspli	-0.0153	0.0043	-0.0237	-0.0068	-3.52	0.0004

	1			2			3			4			5		
	hba1c_			hba1c_			hba1c_			hba1c_			hba1c_		
	N	Mea	SE	N	Mea	SE	N	Mea	SE	N	Mea	SE	N	Mea	SE
Era															
1999-2002	40	6.9	0.2	34	7.2	0.2	30	7.1	0.2	26	7.0	0.3	24	7.6	0.3
2003-2006	49	6.7	0.2	41	6.7	0.2	36	6.7	0.2	25	6.8	0.2	22	6.7	0.3
2007-2010	20	6.1	0.1	18	6.5	0.3	16	6.7	0.2	9	6.3	0.2	5	7.1	0.6
2011-2014	5	5.7	0.4	3	5.4	0.1	1	5.6

Exhibit A-11b. IAK HbA1c levels post last infusion (boxplots and generalized estimating equations)

HbA1c (%) by Transplant type



The GENMOD Procedure

Analysis Of GEE Parameter Estimates

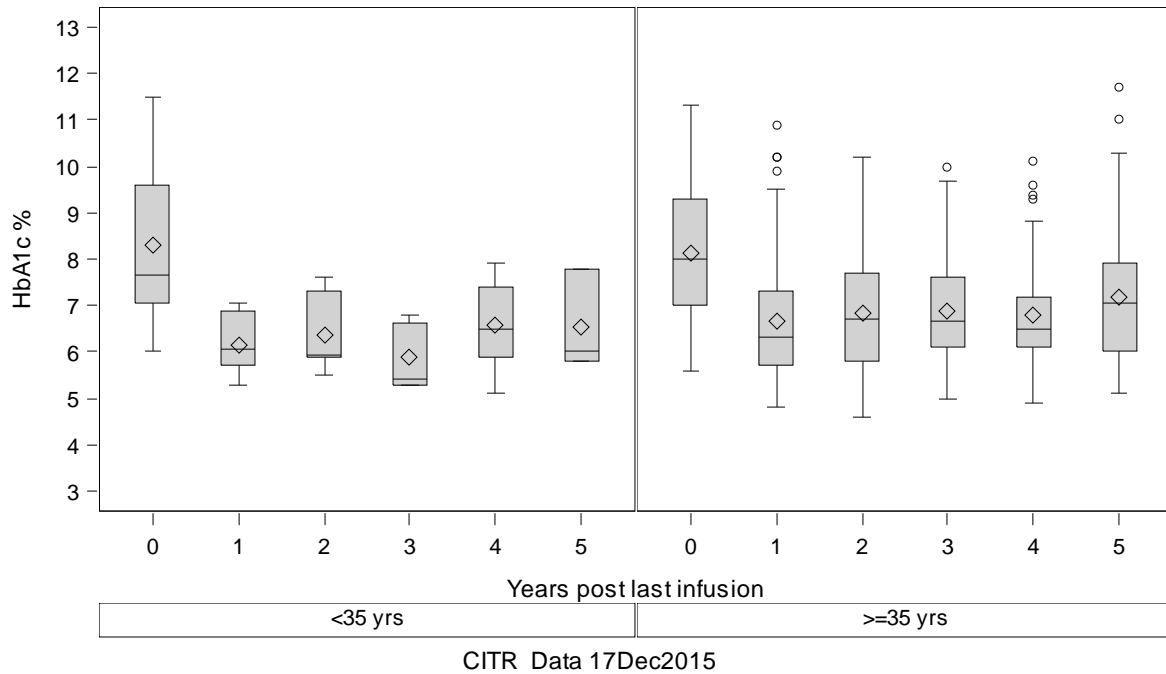
Empirical Standard Error Estimates

Parameter	Estimate	Standard Error	95% Confidence Limits		Z	Pr > Z
Intercept	1.9966	0.0138	1.9696	2.0237	144.66	<.0001
typeoftran	0.0000	0.0000	0.0000	0.0000	.	.
yrspli	-0.0128	0.0045	-0.0216	-0.0041	-2.88	0.0040

Transplant type	1			2			3			4			5		
	hba1c_			hba1c_			hba1c_			hba1c_			hba1c_		
	N	Mea n	SE	N	Mea n	SE	N	Mea n	SE	N	Mea n	SE	N	Mea n	SE
IAK	114	6.6	0.1	96	6.8	0.1	83	6.8	0.1	60	6.8	0.1	51	7.1	0.2

Exhibit A-11b. IAK HbA1c levels post last infusion (boxplots and generalized estimating equations)

HbA1c (%) by Recipient age



The GENMOD Procedure

Analysis Of GEE Parameter Estimates

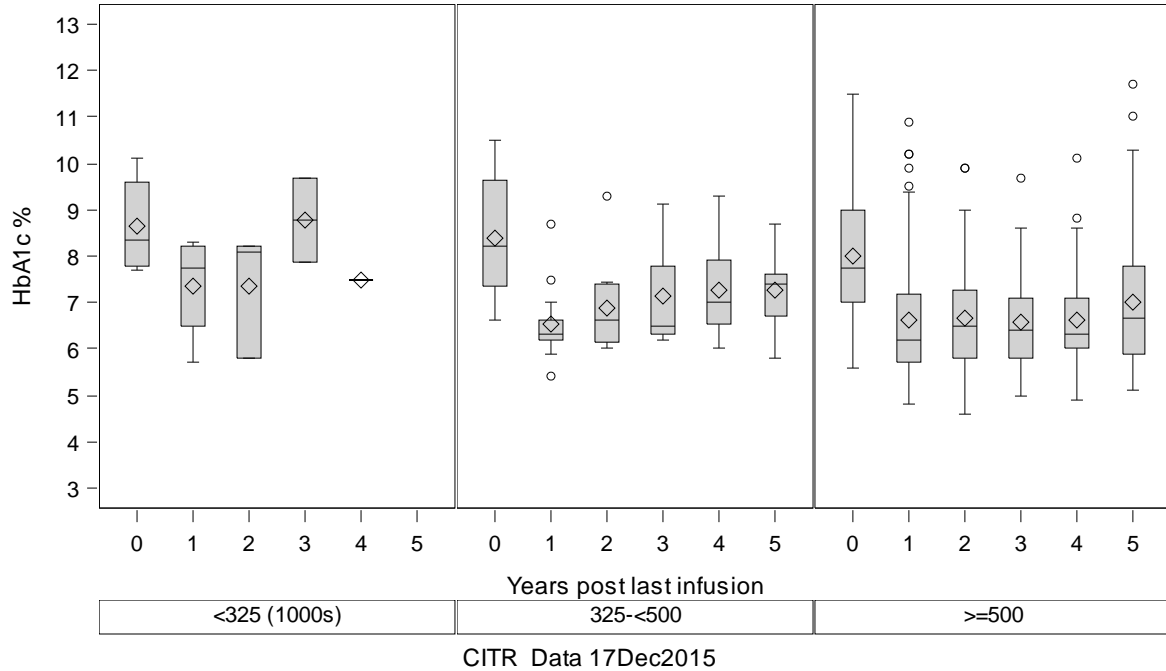
Empirical Standard Error Estimates

Parameter	Estimate	Standard Error	95% Confidence Limits		Z	Pr > Z
Intercept	1.8917	0.0755	1.7438	2.0397	25.06	<.0001
age_c	0.0544	0.0388	-0.0217	0.1305	1.40	0.1611
yrspli	-0.0127	0.0044	-0.0214	-0.0041	-2.88	0.0039

Recipient age	1		2		3		4		5						
	hba1c_		hba1c_		hba1c_		hba1c_		hba1c_						
	N	Mea n	SE	N	Mea n	SE	N	Mea n	SE	N	Mea n	SE			
<35 yrs	10	6.2	0.2	6	6.4	0.4	5	5.9	0.3	5	6.6	0.5	3	6.5	0.6
>=35 yrs	104	6.7	0.1	90	6.8	0.1	78	6.9	0.1	55	6.8	0.2	48	7.2	0.2

Exhibit A-11b. IAK HbA1c levels post last infusion (boxplots and generalized estimating equations)

HbA1c (%) by Total IEQs all infusions



The GENMOD Procedure

Analysis Of GEE Parameter Estimates

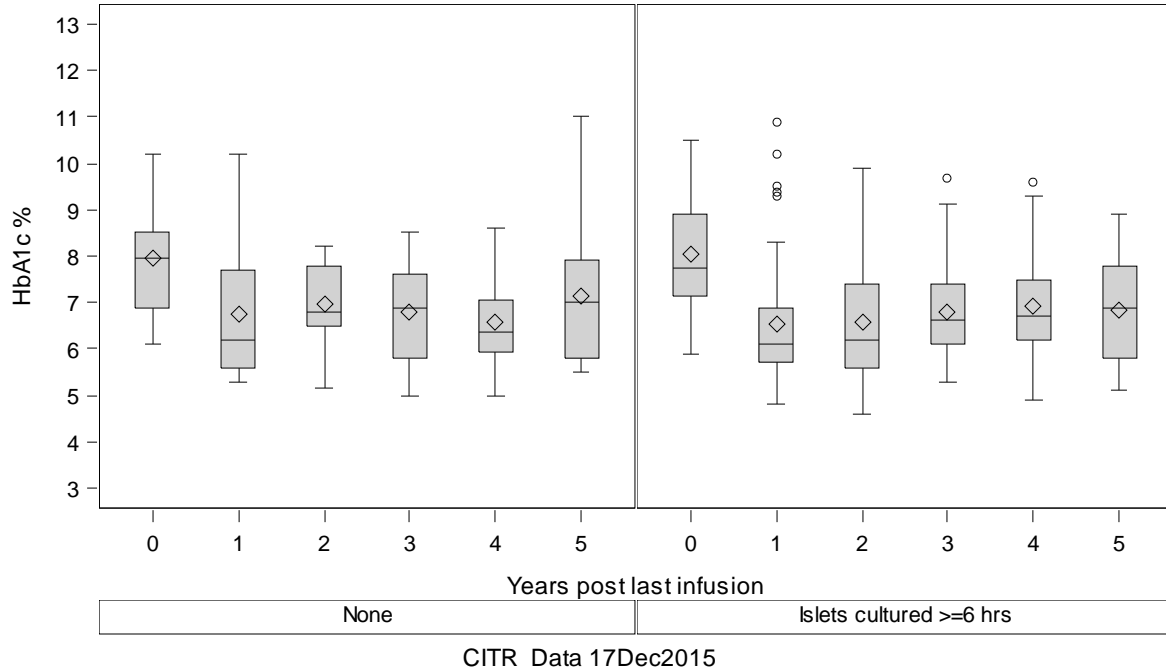
Empirical Standard Error Estimates

Parameter	Estimate	Standard Error	95% Confidence Limits		Z	Pr > Z
Intercept	2.1586	0.0657	2.0299	2.2874	32.86	<.0001
ieqinf_c	-0.0619	0.0247	-0.1103	-0.0135	-2.51	0.0122
yrspli	-0.0118	0.0047	-0.0210	-0.0027	-2.53	0.0114

	1		2		3		4		5					
	<i>hba1c_</i>		<i>hba1c_</i>		<i>hba1c_</i>		<i>hba1c_</i>		<i>hba1c_</i>					
	<i>N</i>	<i>Mea</i> <i>n</i> <i>SE</i>	<i>N</i>	<i>Mea</i> <i>n</i> <i>SE</i>	<i>N</i>	<i>Mea</i> <i>n</i> <i>SE</i>	<i>N</i>	<i>Mea</i> <i>n</i> <i>SE</i>	<i>N</i>	<i>Mea</i> <i>n</i> <i>SE</i>				
Total IEQs all infusions														
<325 (1000s)	4	7.4 0.6	3	7.4 0.8	2	8.8 0.9	1	7.5
325-<500	13	6.6 0.2	10	6.9 0.3	10	7.1 0.3	8	7.3 0.4	6	7.3 0.4				
>=500	78	6.6 0.2	68	6.6 0.1	58	6.6 0.1	42	6.6 0.2	38	7.0 0.3				

Exhibit A-11b. IAK HbA1c levels post last infusion (boxplots and generalized estimating equations)

HbA1c (%) by Cultured>6h



The GENMOD Procedure

Analysis Of GEE Parameter Estimates

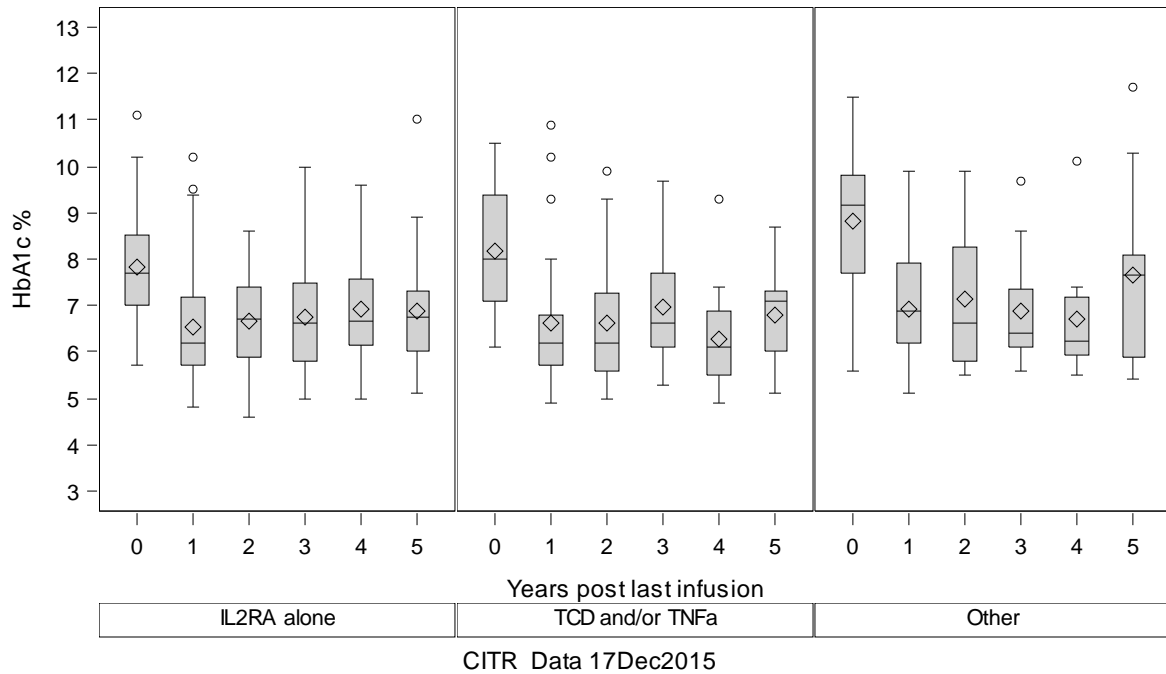
Empirical Standard Error Estimates

Parameter	Estimate	Standard Error	95% Confidence Limits		Z	Pr > Z
Intercept	1.9818	0.0342	1.9147	2.0488	57.93	<.0001
cultured_	-0.0052	0.0406	-0.0849	0.0744	-0.13	0.8974
yrspli	-0.0106	0.0055	-0.0215	0.0002	-1.92	0.0551

	1			2			3			4			5		
	hba1c_			hba1c_			hba1c_			hba1c_			hba1c_		
	N	Mea n	SE	N	Mea n	SE	N	Mea n	SE	N	Mea n	SE	N	Mea n	SE
Cultured>6h															
None	19	6.7	0.3	17	6.9	0.2	15	6.8	0.3	12	6.6	0.3	11	7.2	0.5
Islets cultured >=6 hrs	46	6.5	0.2	39	6.6	0.2	34	6.8	0.2	21	6.9	0.3	15	6.8	0.3

Exhibit A-11b. IAK HbA1c levels post last infusion (boxplots and generalized estimating equations)

HbA1c (%) by Induction



The GENMOD Procedure

Analysis Of GEE Parameter Estimates

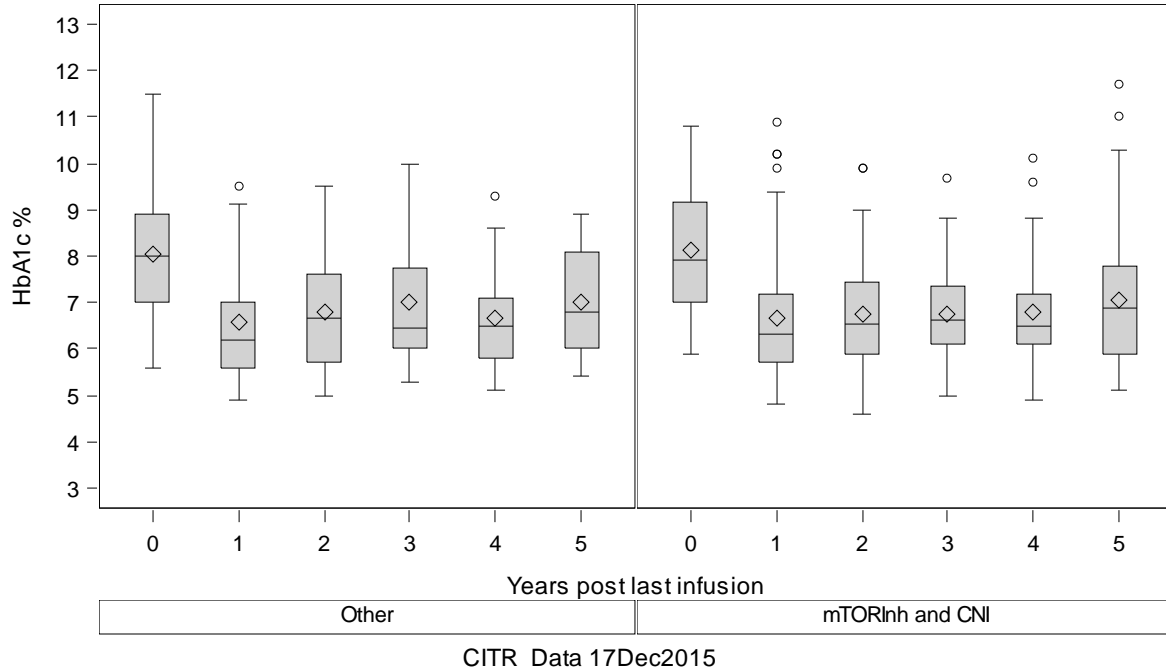
Empirical Standard Error Estimates

Parameter	Estimate	Standard Error	95% Confidence Limits		Z	Pr > Z
Intercept	1.9694	0.0161	1.9378	2.0011	122.01	<.0001
inducco	0.0326	0.0191	-0.0049	0.0701	1.70	0.0888
yrspli	-0.0121	0.0043	-0.0205	-0.0038	-2.85	0.0044

Induction	1			2			3			4			5		
	hba1c_			hba1c_			hba1c_			hba1c_			hba1c_		
	N	Mea n	SE	N	Mea n	SE	N	Mea n	SE	N	Mea n	SE	N	Mea n	SE
IL2RA alone	62	6.5	0.1	57	6.7	0.1	51	6.7	0.2	36	6.9	0.2	30	6.9	0.2
TCD and/or TNFa	23	6.6	0.3	18	6.6	0.3	15	7.0	0.3	11	6.3	0.4	9	6.8	0.4
Other	19	6.9	0.3	15	7.2	0.4	12	6.9	0.4	10	6.7	0.4	10	7.7	0.7

Exhibit A-11b. IAK HbA1c levels post last infusion (boxplots and generalized estimating equations)

HbA1c (%) by Maintenance



The GENMOD Procedure

Analysis Of GEE Parameter Estimates

Empirical Standard Error Estimates

Parameter	Estimate	Standard Error	95% Confidence Limits		Z	Pr > Z
Intercept	1.9952	0.0251	1.9461	2.0443	79.59	<.0001
<i>maint</i>	-0.0076	0.0302	-0.0668	0.0517	-0.25	0.8020
<i>yrspli</i>	-0.0132	0.0044	-0.0218	-0.0046	-3.02	0.0026

Maintenance	1			2			3			4			5		
	<i>hba1c_</i>			<i>hba1c_</i>			<i>hba1c_</i>			<i>hba1c_</i>			<i>hba1c_</i>		
	N	Mea n	SE	N	Mea n	SE	N	Mea n	SE	N	Mea n	SE	N	Mea n	SE
Other	31	6.6	0.2	22	6.8	0.3	20	7.0	0.3	12	6.7	0.4	10	7.0	0.4
mTORInh and CNI	73	6.6	0.2	68	6.7	0.1	58	6.7	0.1	45	6.8	0.2	39	7.0	0.2