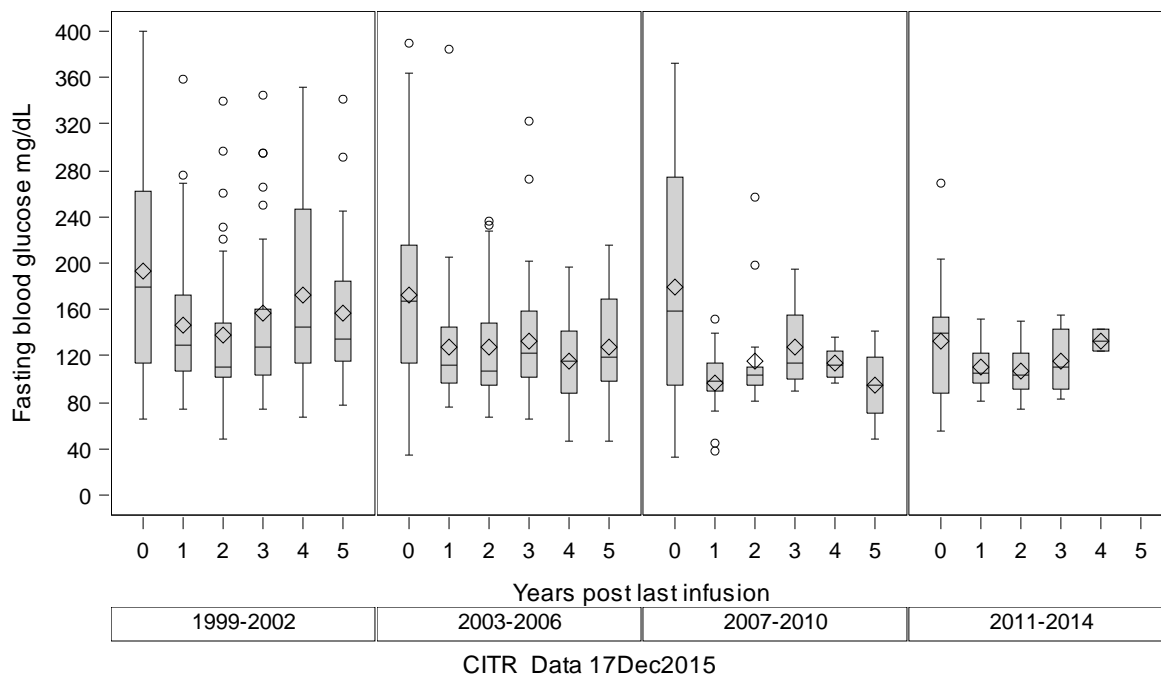


# Exhibit A-12b. IAK Fasting Blood Glucose levels post last infusion (boxplots and generalized estimating equations)

Fasting blood glucose (mg/dL) by Era



## The GENMOD Procedure

### Analysis Of GEE Parameter Estimates

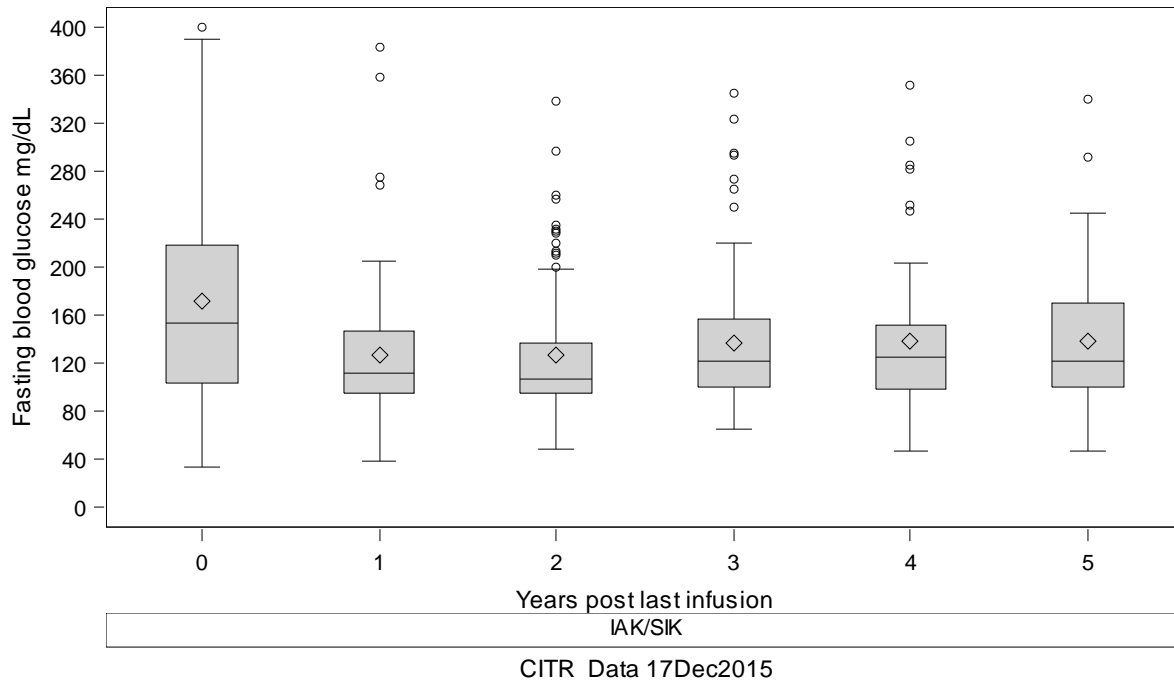
#### Empirical Standard Error Estimates

Parameter	Estimate	Standard Error	95% Confidence Limits		Z	Pr >  Z
Intercept	5.2979	0.0718	5.1572	5.4385	73.81	<.0001
era	-0.1245	0.0264	-0.1762	-0.0728	-4.72	<.0001
yrspli	-0.0357	0.0080	-0.0514	-0.0200	-4.46	<.0001

Era	1			2			3			4			5		
	fastbg_			fastbg_			fastbg_			fastbg_			fastbg_		
	N	Mea n	SE	N	Mea n	SE	N	Mea n	SE	N	Mea n	SE	N	Mea n	SE
1999-2002	35	146	10	29	138	13	26	156	15	23	172	16	23	157	14
2003-2006	48	128	7	46	136	11	40	133	8	26	138	18	19	128	11
2007-2010	21	97	6	18	116	10	18	127	8	9	113	5	6	95	13
2011-2014	14	111	6	11	107	7	8	116	10	2	134	10	.	.	.

Exhibit A-12b. IAK Fasting Blood Glucose levels post last infusion (boxplots and generalized estimating equations)

Fasting blood glucose (mg/dL) by Transplant type



**The GENMOD Procedure**

Analysis Of GEE Parameter Estimates

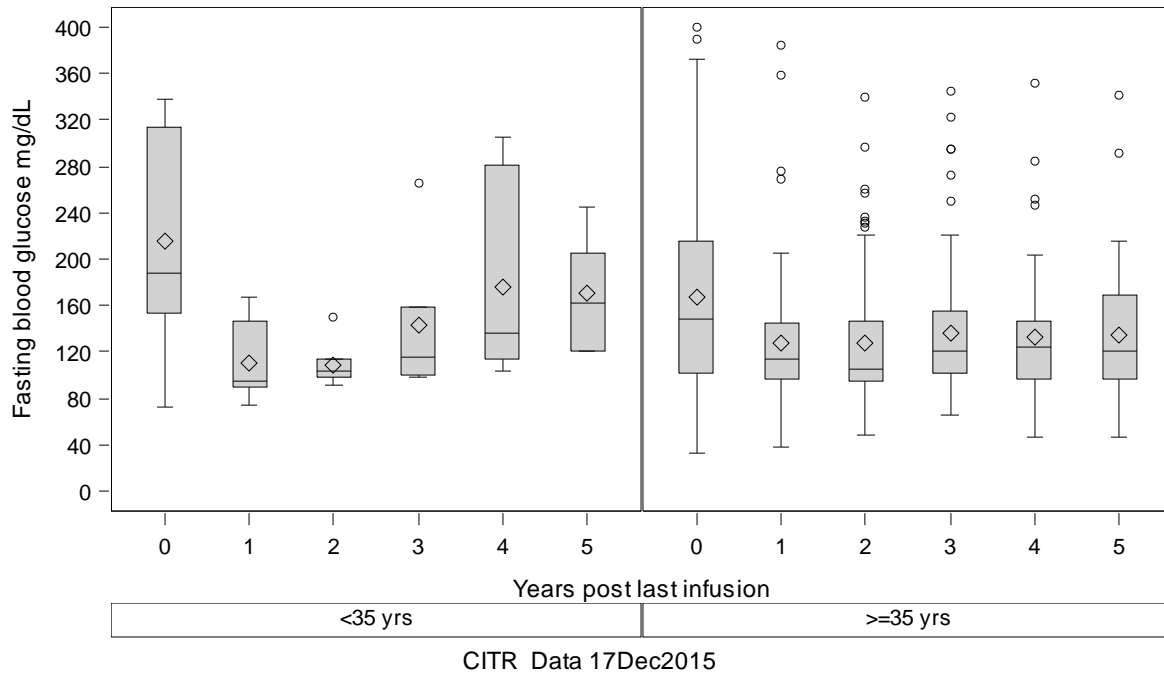
Empirical Standard Error Estimates

Parameter	Estimate	Standard Error	95% Confidence Limits		Z	Pr >  Z
Intercept	5.0212	0.0323	4.9579	5.0845	155.45	<.0001
typeoftran	0.0000	0.0000	0.0000	0.0000	.	.
yrspli	-0.0231	0.0077	-0.0383	-0.0079	-2.98	0.0028

Transplant type	1			2			3			4			5		
	fastbg_			fastbg_			fastbg_			fastbg_			fastbg_		
	N	Mea n	SE	N	Mea n	SE	N	Mea n	SE	N	Mea n	SE	N	Mea n	SE
IAK	118	126	5	104	130	6	92	137	6	60	147	10	48	138	8

# Exhibit A-12b. IAK Fasting Blood Glucose levels post last infusion (boxplots and generalized estimating equations)

Fasting blood glucose (mg/dL) by Recipient age



## The GENMOD Procedure

### Analysis Of GEE Parameter Estimates

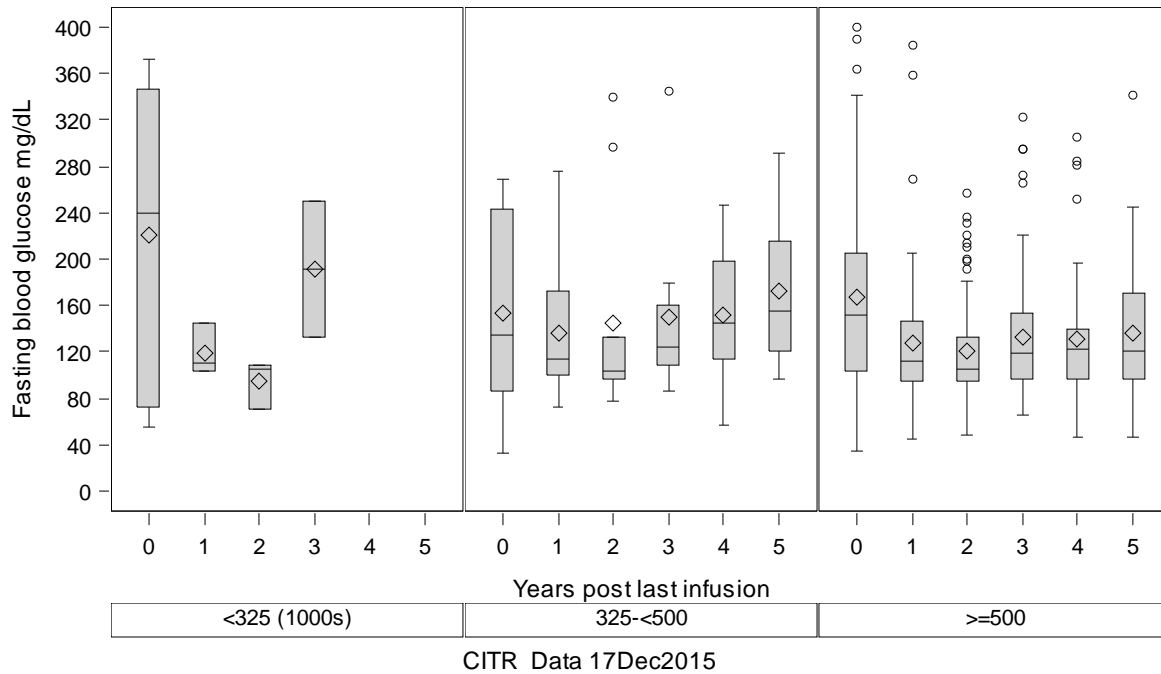
#### Empirical Standard Error Estimates

Parameter	Estimate	Standard Error	95% Confidence Limits		Z	Pr >  Z
Intercept	5.3441	0.2405	4.8727	5.8155	22.22	<.0001
age_c	-0.1679	0.1225	-0.4080	0.0722	-1.37	0.1704
yrspli	-0.0245	0.0077	-0.0396	-0.0095	-3.19	0.0014

Recipient age	1		2			3			4			5			
	fastbg_		fastbg_			fastbg_			fastbg_			fastbg_			
	N	Mea n	SE	N	Mea n	SE	N	Mea n	SE	N	Mea n	SE	N	Mea n	SE
<35 yrs	10	111	11	9	155	46	6	143	26	7	175	31	5	171	24
≥35 yrs	108	127	5	95	128	6	86	137	6	53	144	11	43	134	9

# Exhibit A-12b. IAK Fasting Blood Glucose levels post last infusion (boxplots and generalized estimating equations)

Fasting blood glucose (mg/dL) by Total IEQs all infusions



## The GENMOD Procedure

Analysis Of GEE Parameter Estimates

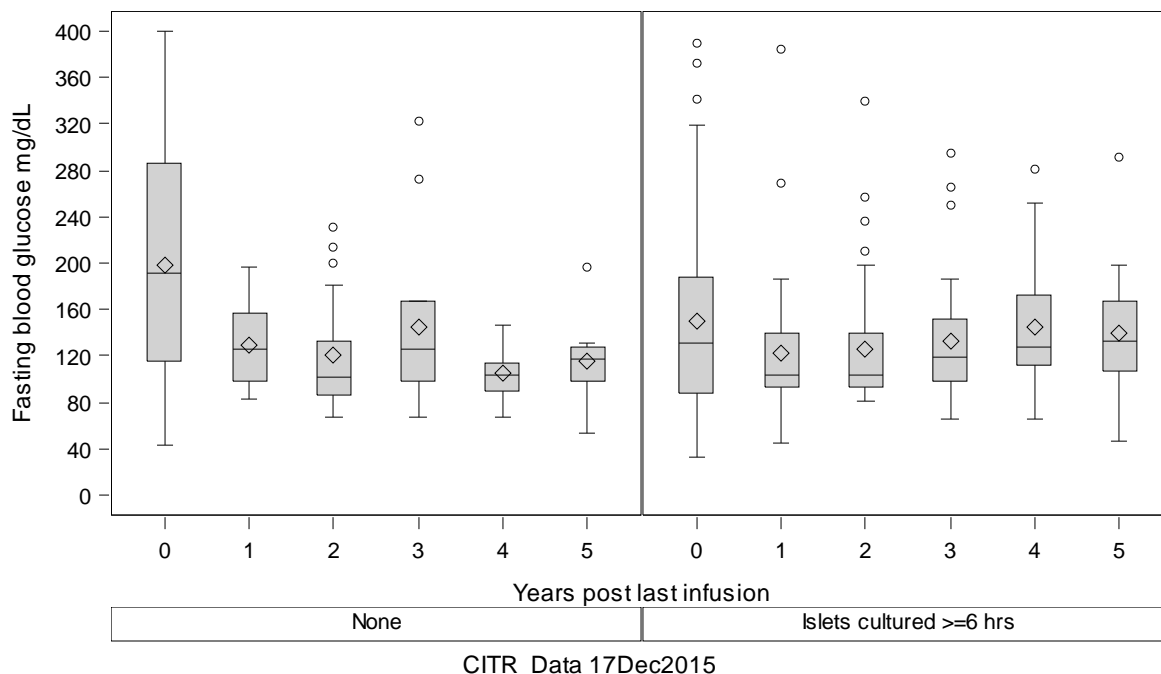
Empirical Standard Error Estimates

Parameter	Estimate	Standard Error	95% Confidence Limits		Z	Pr >  Z
Intercept	5.2442	0.1751	4.9011	5.5873	29.96	<.0001
ieqinf_c	-0.0828	0.0603	-0.2011	0.0354	-1.37	0.1697
yrspli	-0.0210	0.0078	-0.0364	-0.0057	-2.68	0.0073

	1			2			3			4			5					
	<i>fastbg_</i>						<i>fastbg_</i>						<i>fastbg_</i>					
	N	Mea	SE	N	Mea	SE	N	Mea	SE	N	Mea	SE	N	Mea	SE			
Total IEQs all infusions																		
<325 (1000s)	3	119	13	3	95	12	2	191	59	.	.	.	.	.	.			
325-<500	15	137	14	10	145	29	10	150	23	6	151	27	6	172	30			
>=500	82	127	6	77	127	7	67	134	7	46	143	12	36	136	10			

# Exhibit A-12b. IAK Fasting Blood Glucose levels post last infusion (boxplots and generalized estimating equations)

Fasting blood glucose (mg/dL) by Cultured>6h



## The GENMOD Procedure

Analysis Of GEE Parameter Estimates

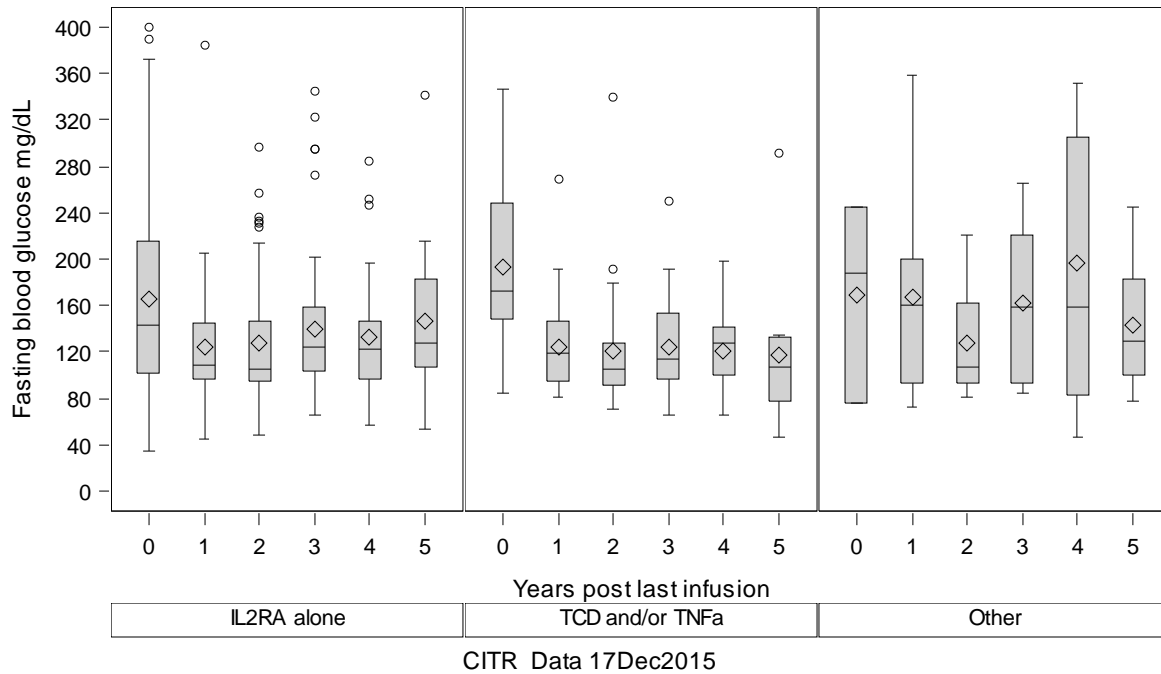
Empirical Standard Error Estimates

Parameter	Estimate	Standard Error	95% Confidence Limits		Z	Pr >  Z
Intercept	5.0278	0.0733	4.8842	5.1713	68.63	<.0001
cultured_	-0.0302	0.0822	-0.1913	0.1310	-0.37	0.7137
yrspli	-0.0239	0.0097	-0.0430	-0.0048	-2.46	0.0141

	1		2		3		4		5						
	fastbg_		fastbg_		fastbg_		fastbg_		fastbg_						
	N	Mea n	SE	N	Mea n	SE	N	Mea n	SE	N	Mea n	SE			
Cultured>6h															
<b>None</b>	19	130	8	18	121	12	15	144	18	11	133	28	9	116	13
<b>Islets cultured &gt;=6 hrs</b>	45	122	8	40	126	9	36	133	8	22	159	17	16	140	14

# Exhibit A-12b. IAK Fasting Blood Glucose levels post last infusion (boxplots and generalized estimating equations)

Fasting blood glucose (mg/dL) by Induction



## The GENMOD Procedure

### Analysis Of GEE Parameter Estimates

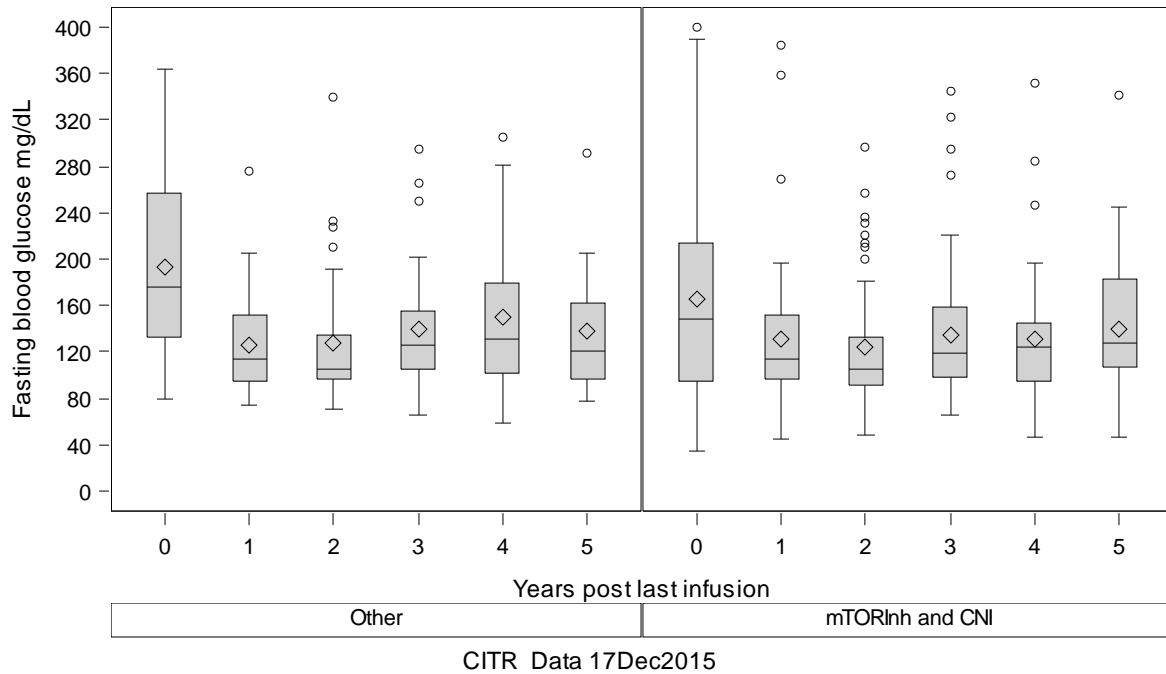
#### Empirical Standard Error Estimates

Parameter	Estimate	Standard Error	95% Confidence Limits		Z	Pr >  Z
Intercept	5.0164	0.0412	4.9356	5.0971	121.81	<.0001
inducco	0.0549	0.0509	-0.0449	0.1547	1.08	0.2811
yrspli	-0.0284	0.0078	-0.0436	-0.0131	-3.65	0.0003

Induction	1			2			3			4			5		
	fastbg_			fastbg_			fastbg_			fastbg_			fastbg_		
	N	Mea n	SE	N	Mea n	SE	N	Mea n	SE	N	Mea n	SE	N	Mea n	SE
<b>IL2RA alone</b>	60	124	6	58	135	10	54	140	8	36	148	14	27	147	11
<b>TCD and/or TNFa</b>	35	125	7	31	121	9	26	124	8	15	121	9	11	118	19
<b>Other</b>	11	168	26	8	128	19	7	162	25	7	197	44	8	144	20

# Exhibit A-12b. IAK Fasting Blood Glucose levels post last infusion (boxplots and generalized estimating equations)

Fasting blood glucose (mg/dL) by Maintenance



## The GENMOD Procedure

### Analysis Of GEE Parameter Estimates

#### Empirical Standard Error Estimates

Parameter	Estimate	Standard Error	95% Confidence Limits		Z	Pr >  Z
Intercept	5.0842	0.0500	4.9863	5.1821	101.76	<.0001
<i>maint</i>	-0.0649	0.0590	-0.1806	0.0508	-1.10	0.2715
<i>yrspli</i>	-0.0280	0.0078	-0.0433	-0.0127	-3.58	0.0003

Maintenance	1		2			3			4			5			
	<i>fastbg_</i>		<i>fastbg_</i>			<i>fastbg_</i>			<i>fastbg_</i>			<i>fastbg_</i>			
	N	Mea n	SE	N	Mea n	SE	N	Mea n	SE	N	Mea n	SE	N	Mea n	SE
<b>Other</b>	39	126	7	34	140	15	31	140	9	16	151	18	13	138	16
<b>mTORInh and CNI</b>	67	130	7	63	124	6	56	135	8	42	146	13	33	140	10