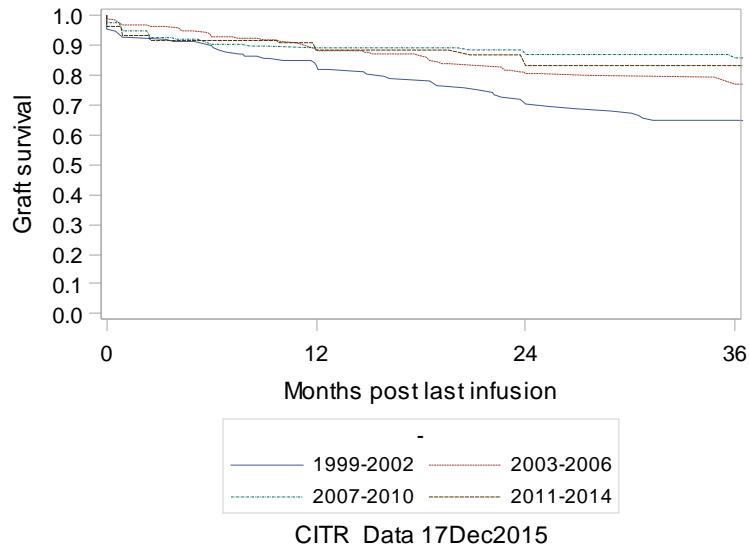


Exhibit A-3a. ITA Retention of C-peptide post last infusion (K-M plots) - Significant Predictors

The LIFETEST Procedure: Era

Test of Equality over Strata			
Test	Chi-Square	DF	Pr > Chi-Square
Log-Rank	22.2754	3	<.0001
Wilcoxon	13.8438	3	0.0031
-2Log(LR)	14.2459	3	0.0026



The LIFETEST Procedure: Total infusions

Test of Equality over Strata			
Test	Chi-Square	DF	Pr > Chi-Square
Log-Rank	21.6084	5	0.0006
Wilcoxon	36.1903	5	<.0001
-2Log(LR)*	22.6634	5	0.0004

Warning: -2Log(LR) test is questionable since some strata have no events.

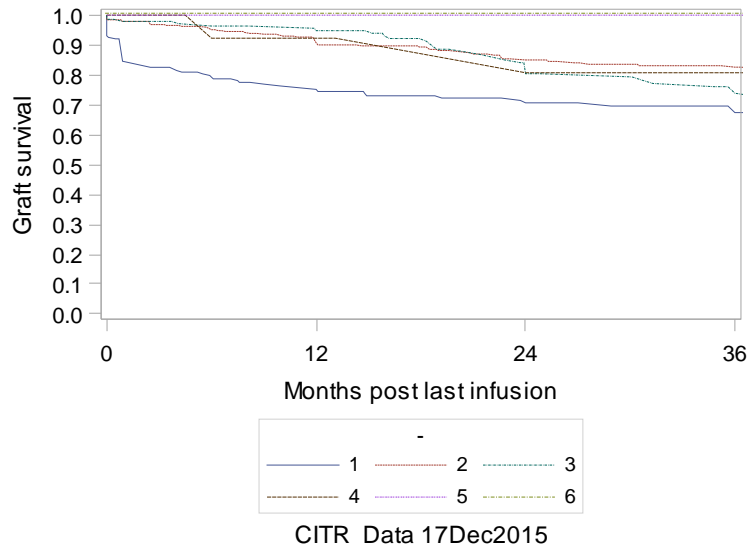
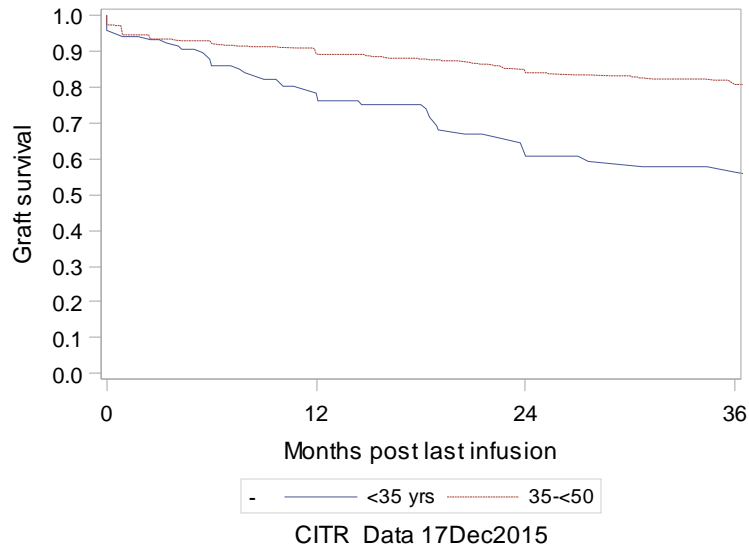


Exhibit A-3a. ITA Retention of C-peptide post last infusion (K-M plots) - Significant Predictors

The LIFETEST Procedure: Recipient age at Tx1

Test of Equality over Strata			
Test	Chi-Square	DF	Pr > Chi-Square
Log-Rank	21.8165	1	<.0001
Wilcoxon	19.3163	1	<.0001
-2Log(LR)	20.6298	1	<.0001



The LIFETEST Procedure: Diabetes duration

Test of Equality over Strata			
Test	Chi-Square	DF	Pr > Chi-Square
Log-Rank	12.7192	2	0.0017
Wilcoxon	11.4332	2	0.0033
-2Log(LR)	14.0170	2	0.0009

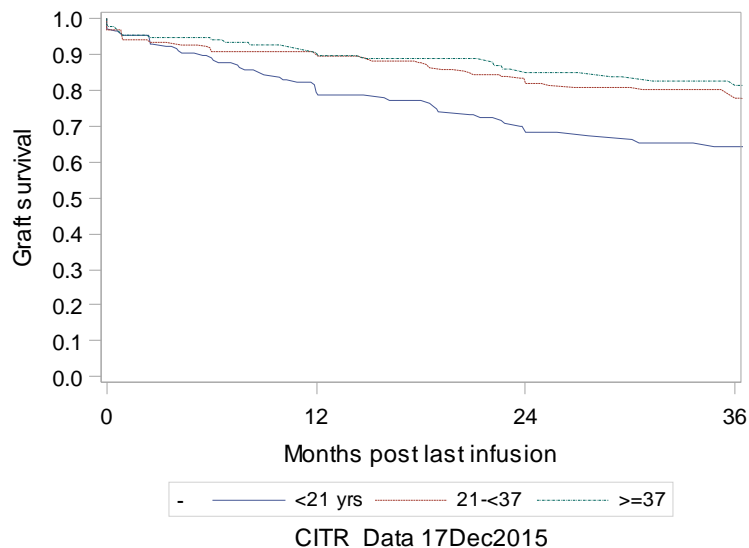
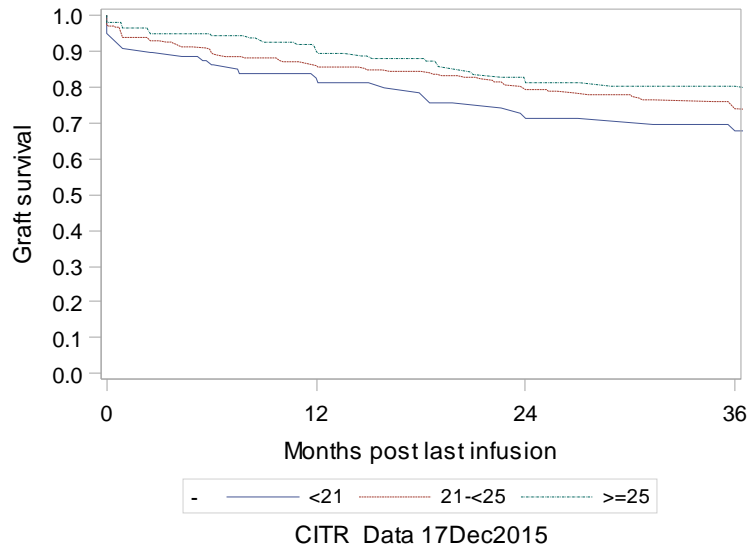


Exhibit A-3a. ITA Retention of C-peptide post last infusion (K-M plots) - Significant Predictors

The LIFETEST Procedure: Recipient BMI at Tx1

Test of Equality over Strata			
Test	Chi-Square	DF	Pr > Chi-Square
Log-Rank	5.1907	2	0.0746
Wilcoxon	5.5203	2	0.0633
-2Log(LR)	6.4588	2	0.0396



The LIFETEST Procedure: Basal C-peptide at Tx1

Test of Equality over Strata			
Test	Chi-Square	DF	Pr > Chi-Square
Log-Rank	4.8899	2	0.0867
Wilcoxon	2.9327	2	0.2308
-2Log(LR)	3.0023	2	0.2229

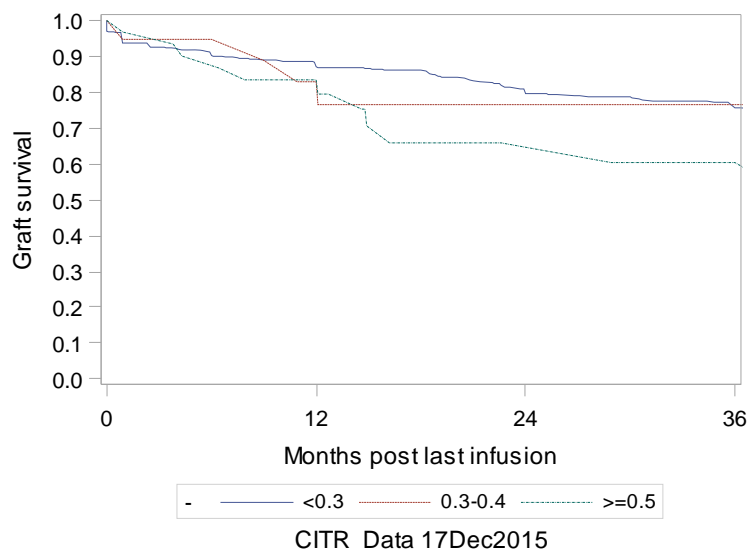
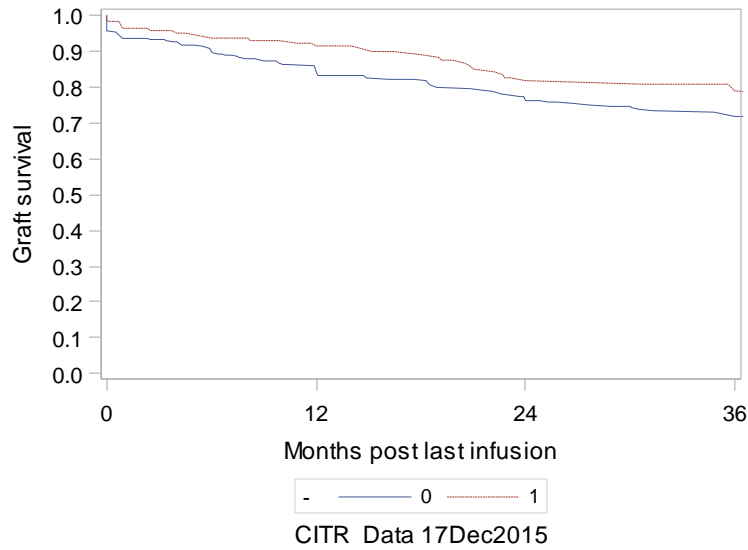


Exhibit A-3a. ITA Retention of C-peptide post last infusion (K-M plots) - Significant Predictors

The LIFETEST Procedure: Baseline treated hypertension (0:No 1:Yes)

Test of Equality over Strata			
Test	Chi-Square	DF	Pr > Chi-Square
Log-Rank	3.3980	1	0.0653
Wilcoxon	3.7144	1	0.0539
-2Log(LR)	2.9982	1	0.0834



The LIFETEST Procedure: Baseline blood pressure medication (0:No 1:Yes)

Test of Equality over Strata			
Test	Chi-Square	DF	Pr > Chi-Square
Log-Rank	3.9678	1	0.0464
Wilcoxon	5.6133	1	0.0178
-2Log(LR)	3.2717	1	0.0705

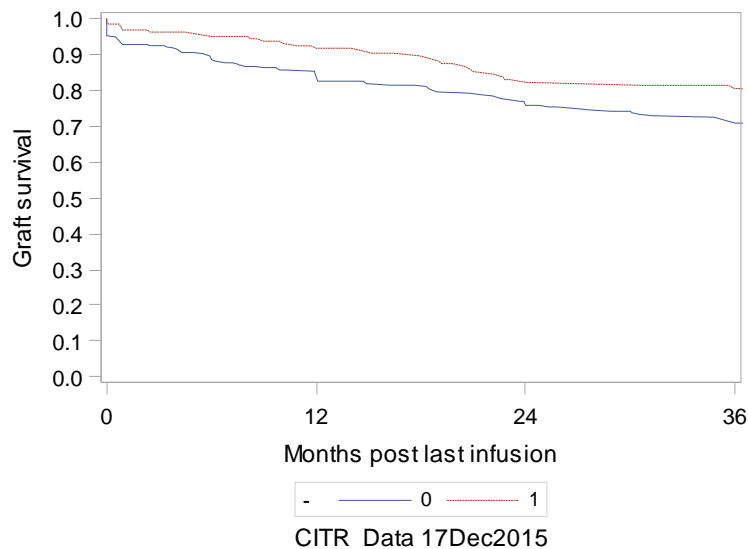
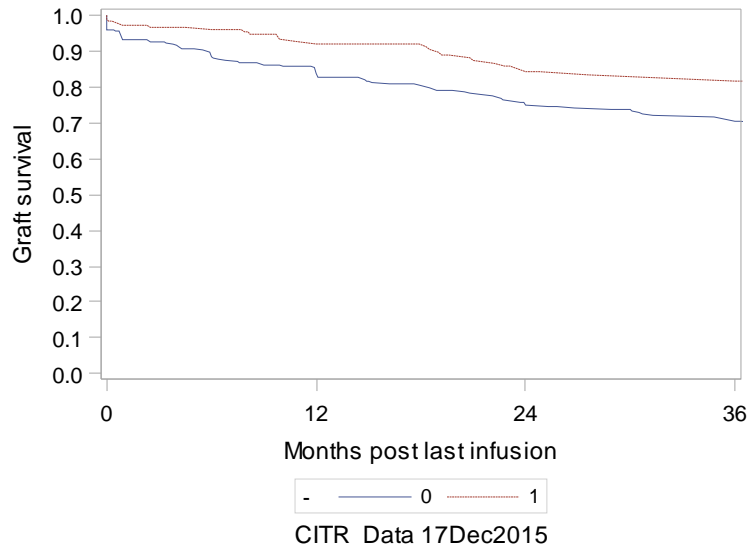


Exhibit A-3a. ITA Retention of C-peptide post last infusion (K-M plots) - Significant Predictors

The LIFETEST Procedure: Baseline lipid lowering medication (0:No 1:Yes)

Test of Equality over Strata			
Test	Chi-Square	DF	Pr > Chi-Square
Log-Rank	8.2584	1	0.0041
Wilcoxon	9.3890	1	0.0022
-2Log(LR)	6.6642	1	0.0098



The LIFETEST Procedure: Baseline autonomic neuropathy (0:No 1:Yes)

Test of Equality over Strata			
Test	Chi-Square	DF	Pr > Chi-Square
Log-Rank	4.1483	1	0.0417
Wilcoxon	4.3838	1	0.0363
-2Log(LR)	7.2423	1	0.0071

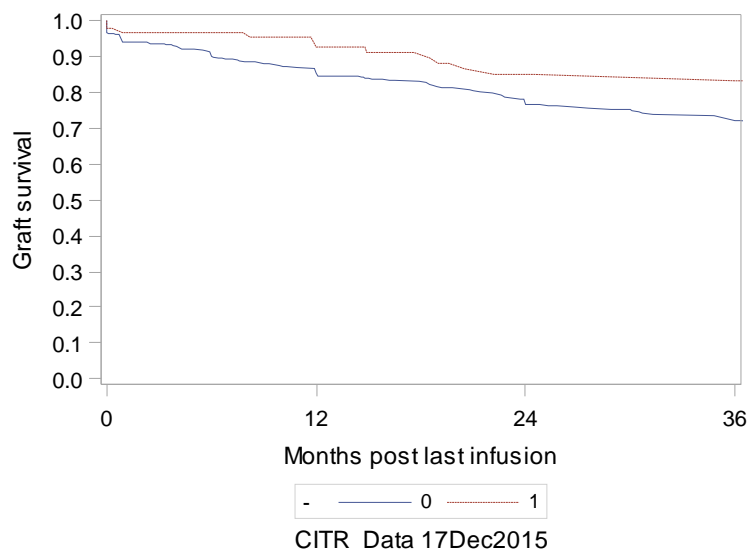
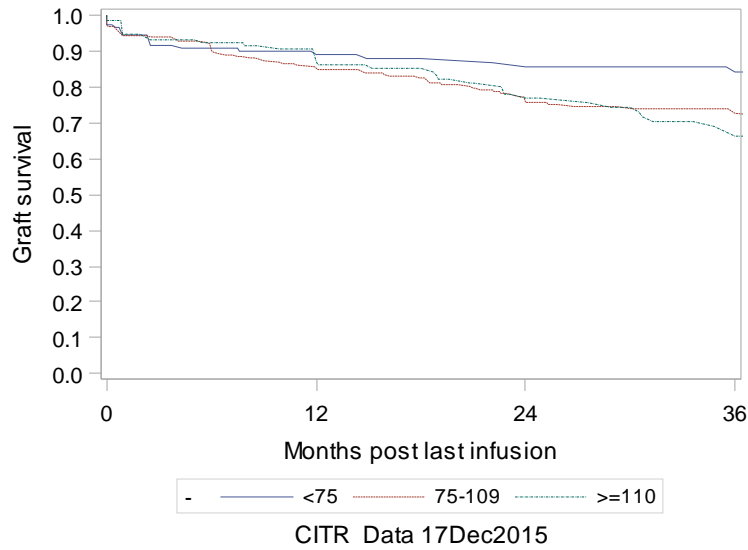


Exhibit A-3a. ITA Retention of C-peptide post last infusion (K-M plots) - Significant Predictors

The LIFETEST Procedure: Baseline LDL

Test of Equality over Strata			
Test	Chi-Square	DF	Pr > Chi-Square
Log-Rank	5.8301	2	0.0542
Wilcoxon	2.9778	2	0.2256
-2Log(LR)	6.1478	2	0.0462



The LIFETEST Procedure: Donor Hx of alcohol abuse (0:No 1:Yes)

Test of Equality over Strata			
Test	Chi-Square	DF	Pr > Chi-Square
Log-Rank	5.4825	1	0.0192
Wilcoxon	5.5812	1	0.0182
-2Log(LR)	5.2544	1	0.0219

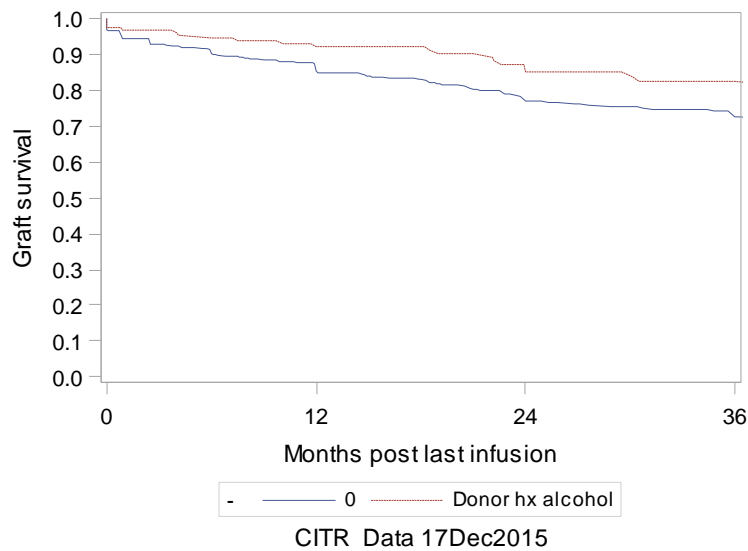
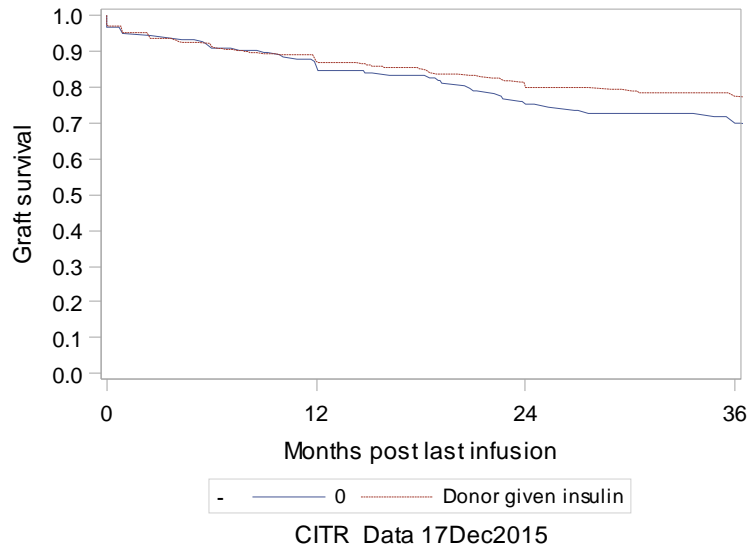


Exhibit A-3a. ITA Retention of C-peptide post last infusion (K-M plots) - Significant Predictors

The LIFETEST Procedure: Donor given insulin during hospital stay (0:No 1:Yes)

Test of Equality over Strata			
Test	Chi-Square	DF	Pr > Chi-Square
Log-Rank	3.9673	1	0.0464
Wilcoxon	1.7590	1	0.1847
-2Log(LR)	2.3022	1	0.1292



The LIFETEST Procedure: Liberase

Test of Equality over Strata			
Test	Chi-Square	DF	Pr > Chi-Square
Log-Rank	15.3898	1	<.0001
Wilcoxon	9.2305	1	0.0024
-2Log(LR)	8.5946	1	0.0034

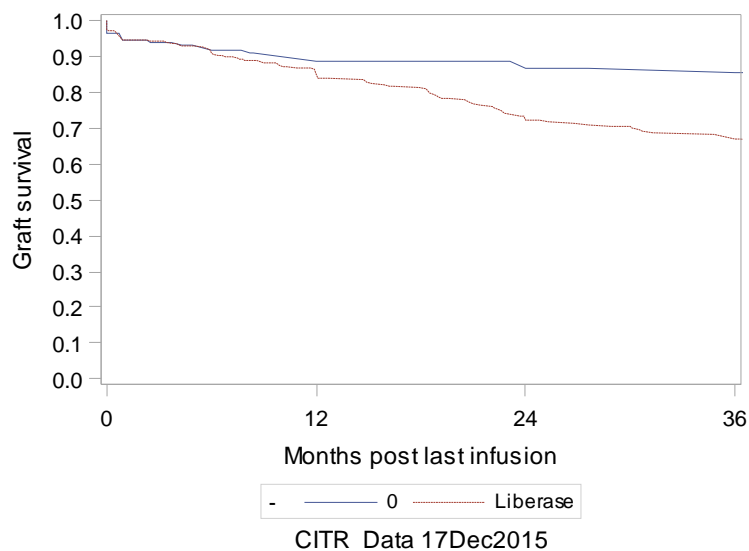
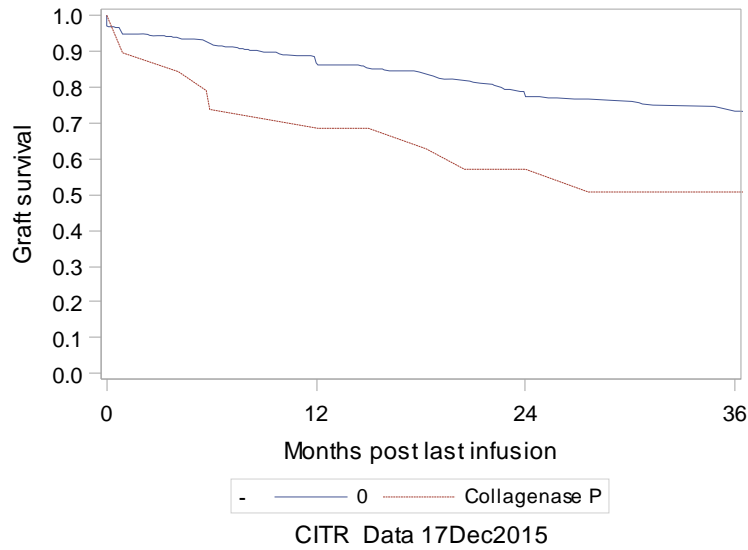


Exhibit A-3a. ITA Retention of C-peptide post last infusion (K-M plots) - Significant Predictors

The LIFETEST Procedure: Collagenase P

Test of Equality over Strata			
Test	Chi-Square	DF	Pr > Chi-Square
Log-Rank	5.7032	1	0.0169
Wilcoxon	5.5498	1	0.0185
-2Log(LR)	6.6847	1	0.0097



The LIFETEST Procedure: Serva/NB1

Test of Equality over Strata			
Test	Chi-Square	DF	Pr > Chi-Square
Log-Rank	10.6291	1	0.0011
Wilcoxon	7.7589	1	0.0053
-2Log(LR)	5.1821	1	0.0228

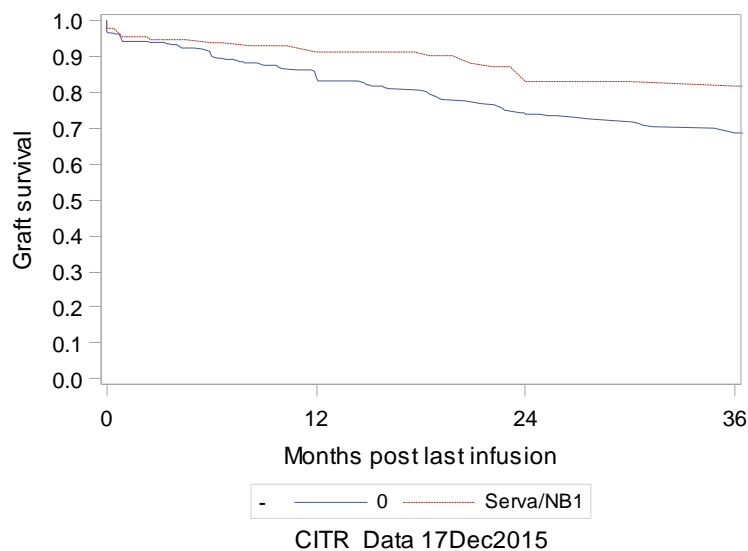
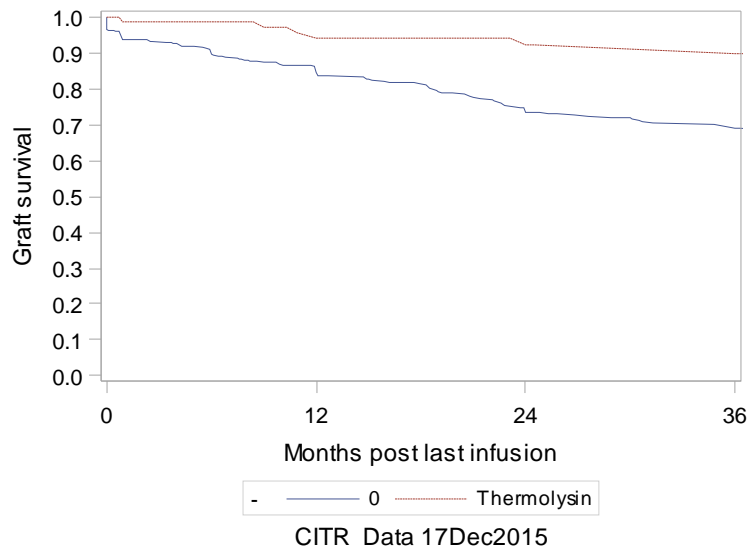


Exhibit A-3a. ITA Retention of C-peptide post last infusion (K-M plots) - Significant Predictors

The LIFETEST Procedure: Thermolysin

Test of Equality over Strata			
Test	Chi-Square	DF	Pr > Chi-Square
Log-Rank	11.4501	1	0.0007
Wilcoxon	11.4433	1	0.0007
-2Log(LR)	13.4901	1	0.0002



The LIFETEST Procedure: Pulmozyme used (0:No 1:Yes)

Test of Equality over Strata			
Test	Chi-Square	DF	Pr > Chi-Square
Log-Rank	13.6060	1	0.0002
Wilcoxon	12.0601	1	0.0005
-2Log(LR)	5.8046	1	0.0160

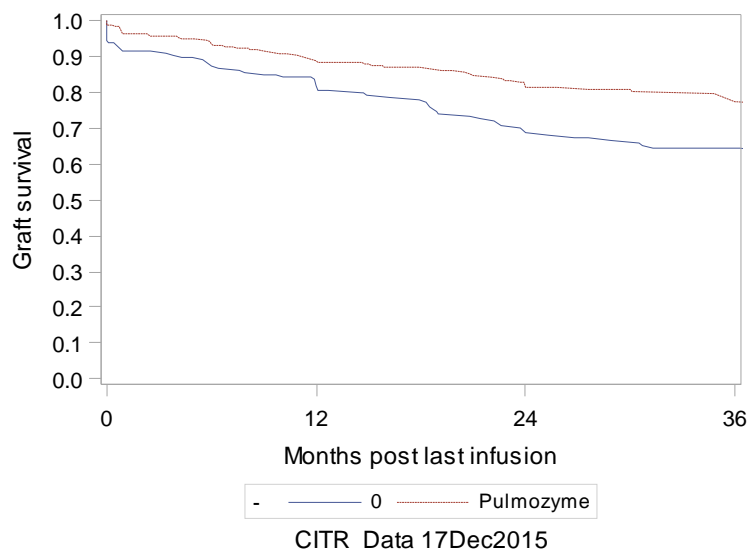
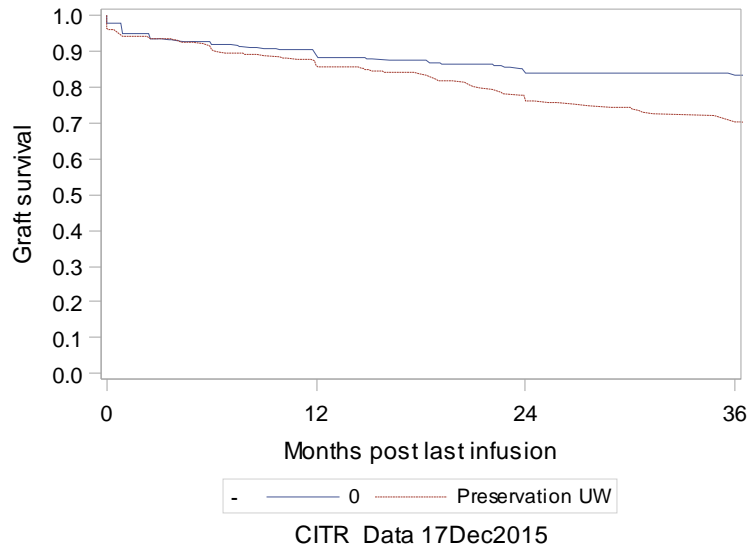


Exhibit A-3a. ITA Retention of C-peptide post last infusion (K-M plots) - Significant Predictors

The LIFETEST Procedure: Pancpres UW

Test of Equality over Strata			
Test	Chi-Square	DF	Pr > Chi-Square
Log-Rank	7.4496	1	0.0063
Wilcoxon	5.5855	1	0.0181
-2Log(LR)	3.1547	1	0.0757



The LIFETEST Procedure: Pancpres Celsior

Test of Equality over Strata			
Test	Chi-Square	DF	Pr > Chi-Square
Log-Rank	7.1465	1	0.0075
Wilcoxon	8.6162	1	0.0033
-2Log(LR)	6.3594	1	0.0117

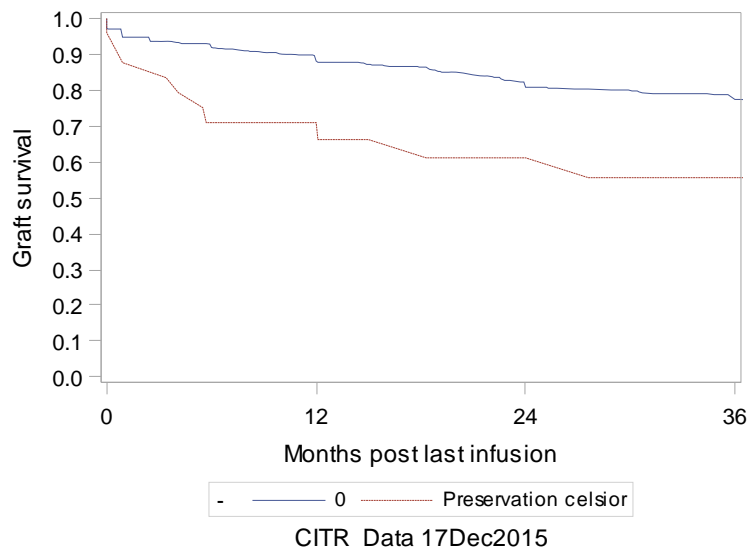
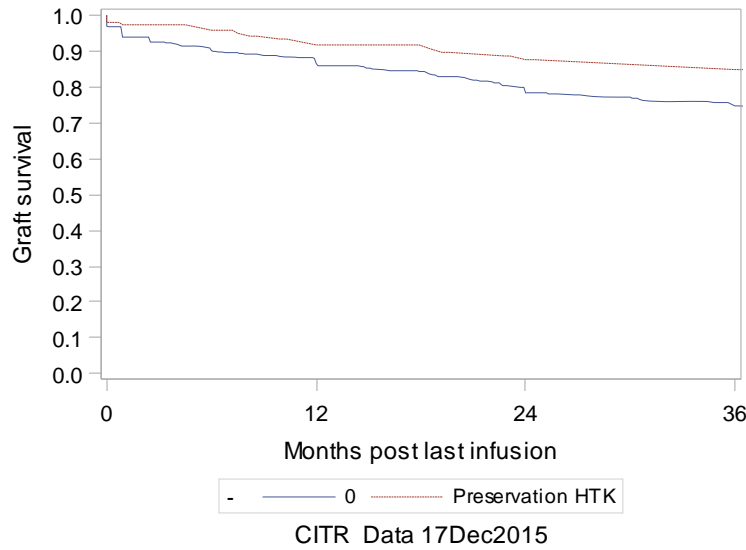


Exhibit A-3a. ITA Retention of C-peptide post last infusion (K-M plots) - Significant Predictors

The LIFETEST Procedure: Pancpres HTK

Test of Equality over Strata			
Test	Chi-Square	DF	Pr > Chi-Square
Log-Rank	10.1597	1	0.0014
Wilcoxon	7.3880	1	0.0066
-2Log(LR)	8.3642	1	0.0038



The LIFETEST Procedure: Islets Cultured >6 hrs

Test of Equality over Strata			
Test	Chi-Square	DF	Pr > Chi-Square
Log-Rank	27.4129	1	<.0001
Wilcoxon	25.1363	1	<.0001
-2Log(LR)	18.1777	1	<.0001

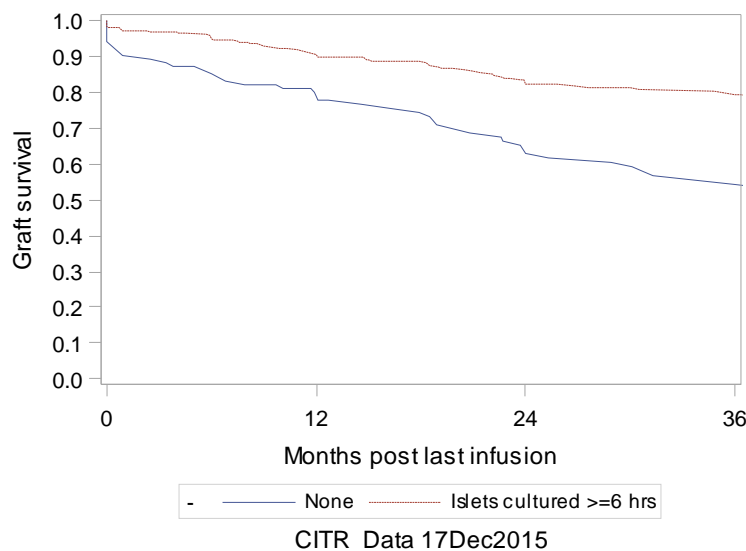
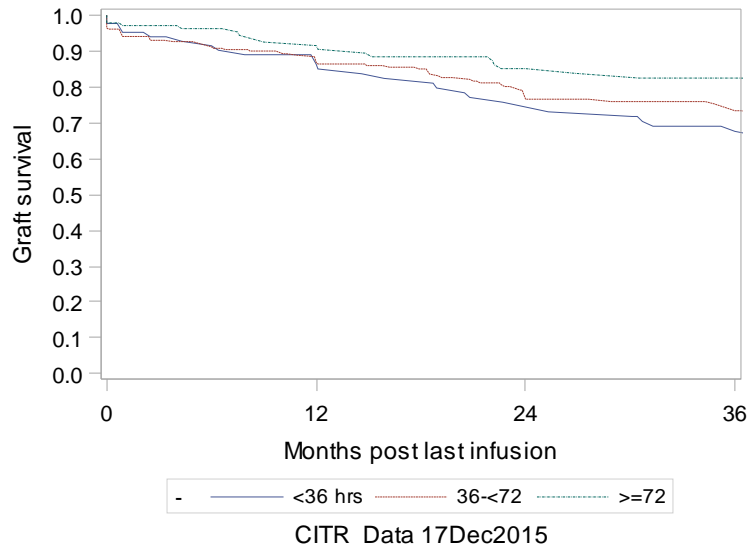


Exhibit A-3a. ITA Retention of C-peptide post last infusion (K-M plots) - Significant Predictors

The LIFETEST Procedure: Hours:death-transplant

Test of Equality over Strata			
Test	Chi-Square	DF	Pr > Chi-Square
Log-Rank	6.3599	2	0.0416
Wilcoxon	5.2016	2	0.0742
-2Log(LR)	4.5516	2	0.1027



The LIFETEST Procedure: Hours:recovery-transplant

Test of Equality over Strata			
Test	Chi-Square	DF	Pr > Chi-Square
Log-Rank	5.6253	2	0.0600
Wilcoxon	3.3498	2	0.1873
-2Log(LR)	4.7471	2	0.0931

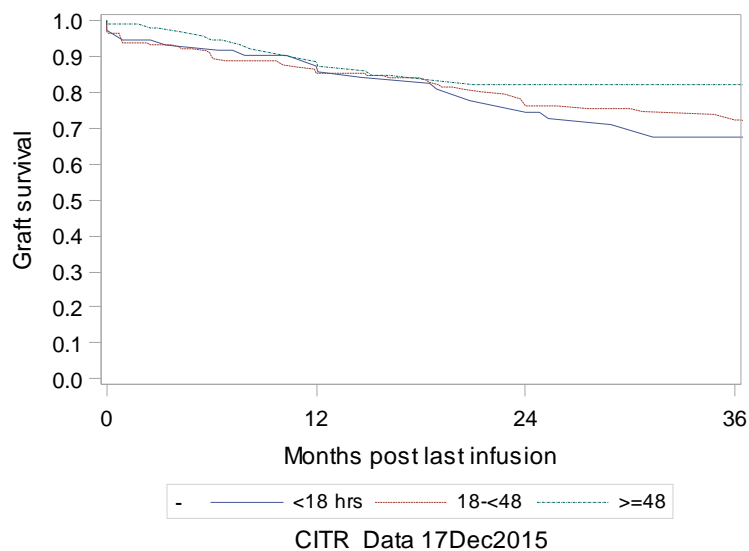
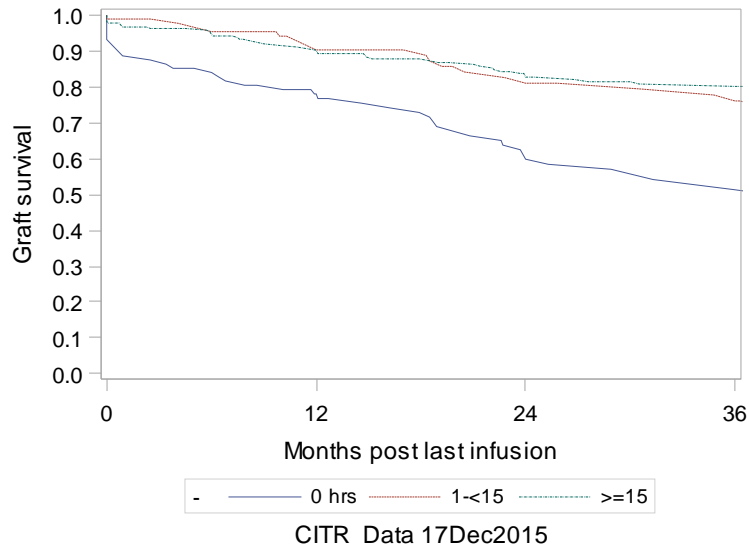


Exhibit A-3a. ITA Retention of C-peptide post last infusion (K-M plots) - Significant Predictors

The LIFETEST Procedure: Hours culture time

Test of Equality over Strata			
Test	Chi-Square	DF	Pr > Chi-Square
Log-Rank	32.5973	2	<.0001
Wilcoxon	29.6162	2	<.0001
-2Log(LR)	21.1781	2	<.0001



The LIFETEST Procedure: Islet viability

Test of Equality over Strata			
Test	Chi-Square	DF	Pr > Chi-Square
Log-Rank	3.2328	2	0.1986
Wilcoxon	2.2592	2	0.3232
-2Log(LR)	0.8047	2	0.6688

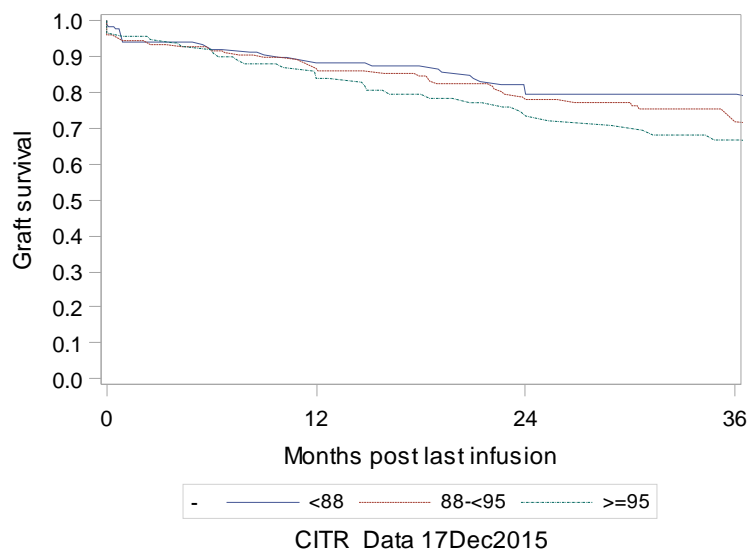
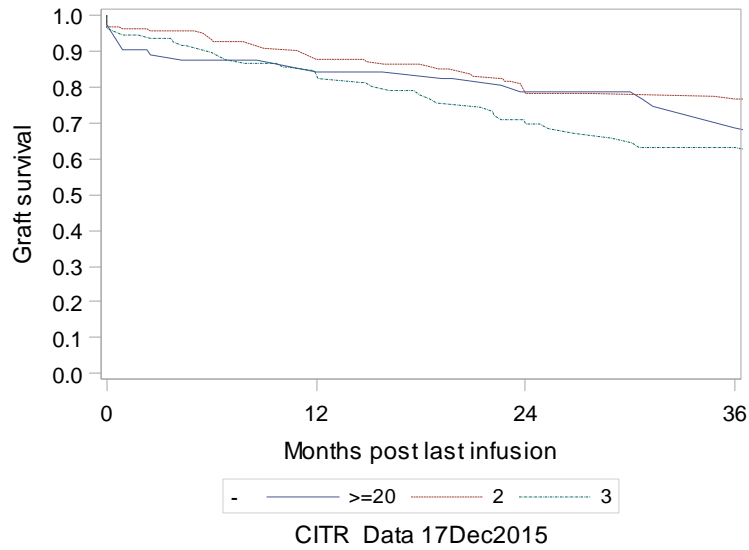


Exhibit A-3a. ITA Retention of C-peptide post last infusion (K-M plots) - Significant Predictors

The LIFETEST Procedure: Endotoxin

Test of Equality over Strata			
Test	Chi-Square	DF	Pr > Chi-Square
Log-Rank	10.1710	2	0.0062
Wilcoxon	6.9675	2	0.0307
-2Log(LR)	9.1203	2	0.0105



The LIFETEST Procedure: IEQ's Infused

Test of Equality over Strata			
Test	Chi-Square	DF	Pr > Chi-Square
Log-Rank	7.3401	2	0.0255
Wilcoxon	15.6739	2	0.0004
-2Log(LR)	7.6238	2	0.0221

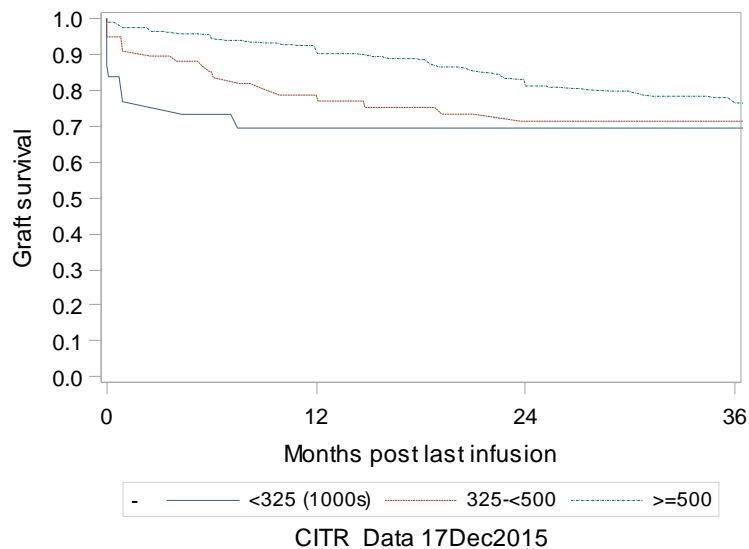
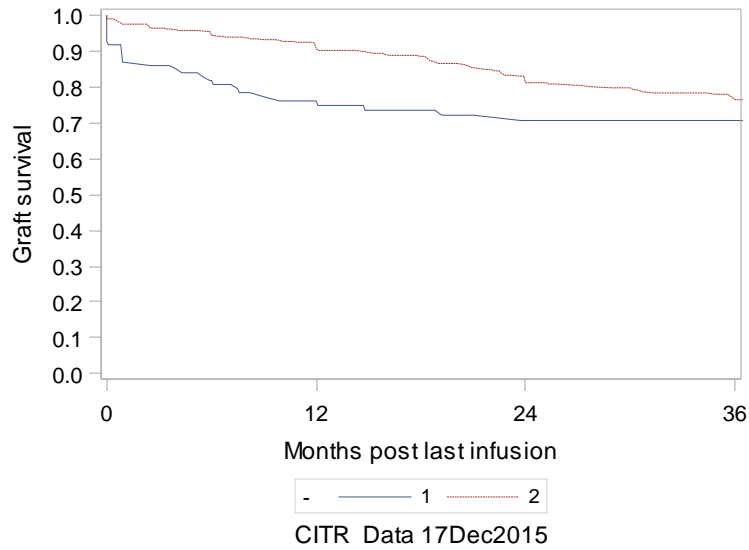


Exhibit A-3a. ITA Retention of C-peptide post last infusion (K-M plots) - Significant Predictors

The LIFETEST Procedure: IEQ's Infused (1:<500 (1000s) 2:>=500 (1000s))

Test of Equality over Strata			
Test	Chi-Square	DF	Pr > Chi-Square
Log-Rank	4.4989	1	0.0339
Wilcoxon	12.3444	1	0.0004
-2Log(LR)	5.2300	1	0.0222



The LIFETEST Procedure: IL2RA (0:No 1:Yes)

Test of Equality over Strata			
Test	Chi-Square	DF	Pr > Chi-Square
Log-Rank	3.3189	1	0.0685
Wilcoxon	0.8352	1	0.3608
-2Log(LR)	0.7825	1	0.3764

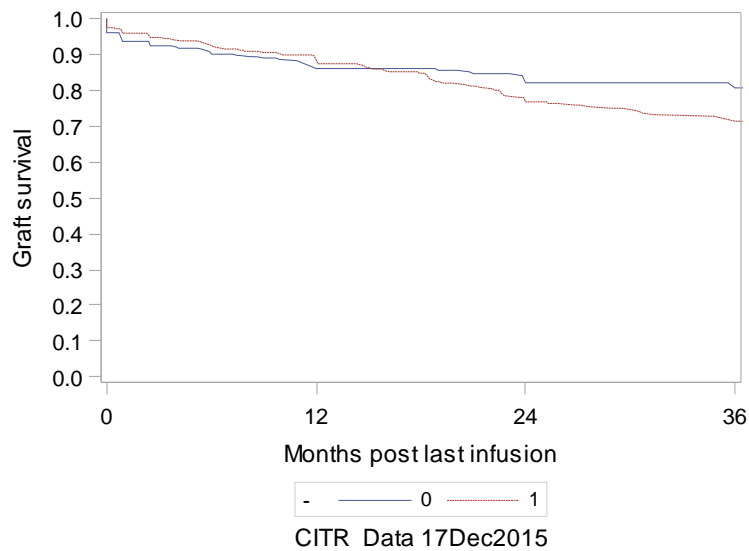
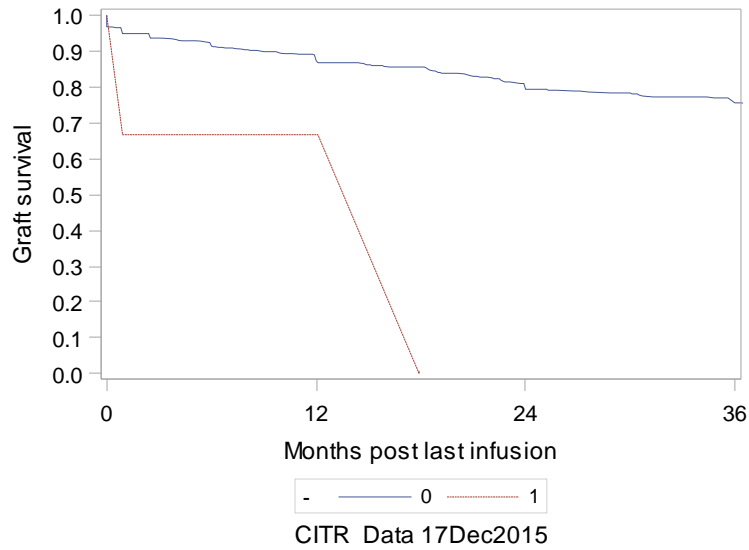


Exhibit A-3a. ITA Retention of C-peptide post last infusion (K-M plots) - Significant Predictors

The LIFETEST Procedure: BCD (0:No 1:Yes)

Test of Equality over Strata			
Test	Chi-Square	DF	Pr > Chi-Square
Log-Rank	7.7734	1	0.0053
Wilcoxon	5.6135	1	0.0178
-2Log(LR)	5.5547	1	0.0184



The LIFETEST Procedure: TNF (0:No 1:Yes)

Test of Equality over Strata			
Test	Chi-Square	DF	Pr > Chi-Square
Log-Rank	10.8198	1	0.0010
Wilcoxon	12.6386	1	0.0004
-2Log(LR)	9.4508	1	0.0021

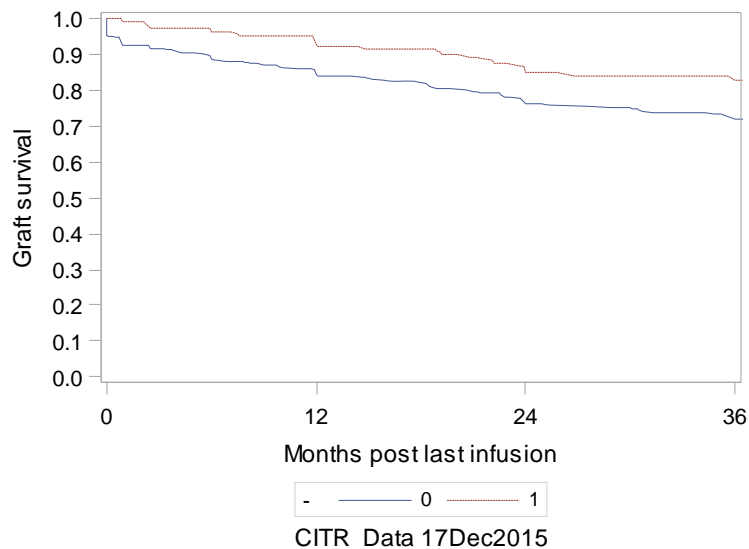
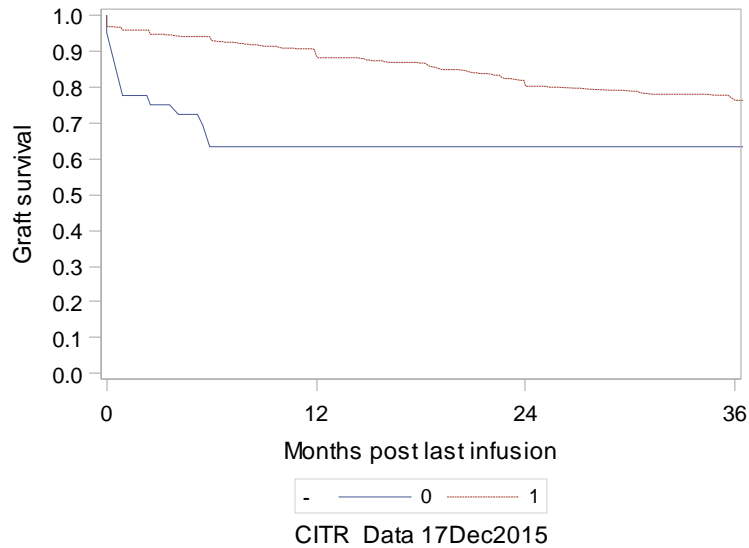


Exhibit A-3a. ITA Retention of C-peptide post last infusion (K-M plots) - Significant Predictors

The LIFETEST Procedure: CALC (0:No 1:Yes)

Test of Equality over Strata			
Test	Chi-Square	DF	Pr > Chi-Square
Log-Rank	14.3942	1	0.0001
Wilcoxon	20.6375	1	<.0001
-2Log(LR)	19.4701	1	<.0001



The LIFETEST Procedure: mTOR (0:No 1:Yes)

Test of Equality over Strata			
Test	Chi-Square	DF	Pr > Chi-Square
Log-Rank	4.6170	1	0.0317
Wilcoxon	1.7137	1	0.1905
-2Log(LR)	0.8960	1	0.3439

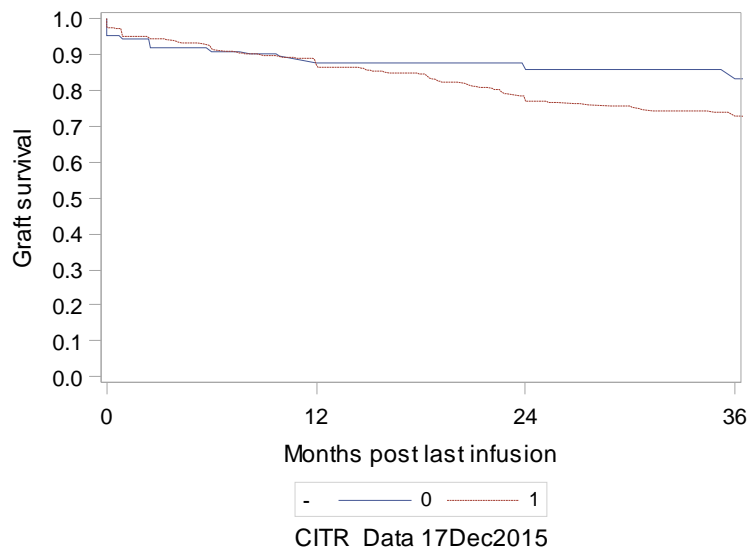


Exhibit A-3a. ITA Retention of C-peptide post last infusion (K-M plots) - Significant Predictors

The LIFETEST Procedure: Induction

Test of Equality over Strata			
Test	Chi-Square	DF	Pr > Chi-Square
Log-Rank	18.6355	2	<.0001
Wilcoxon	15.0016	2	0.0006
-2Log(LR)	10.5867	2	0.0050

