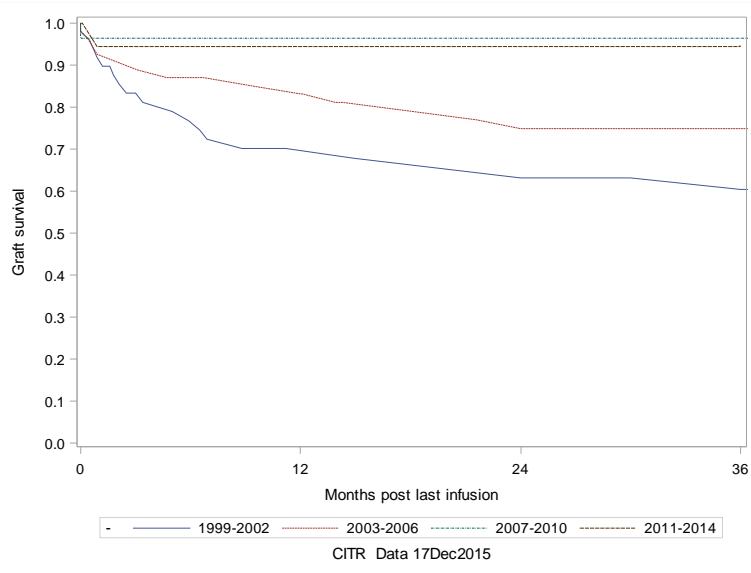


Exhibit A-3b. IAK Retention of C-peptide post last infusion (K-M plots) - Significant Predictors

The LIFETEST Procedure: Era

Test of Equality over Strata			
Test	Chi-Square	DF	Pr > Chi-Square
Log-Rank	11.3024	3	0.0102
Wilcoxon	10.4709	3	0.0150
-2Log(LR)	8.9077	3	0.0305



The LIFETEST Procedure: Total infusions

Test of Equality over Strata			
Test	Chi-Square	DF	Pr > Chi-Square
Log-Rank	18.9876	3	0.0003
Wilcoxon	19.2002	3	0.0002
-2Log(LR)	24.1351	3	<.0001

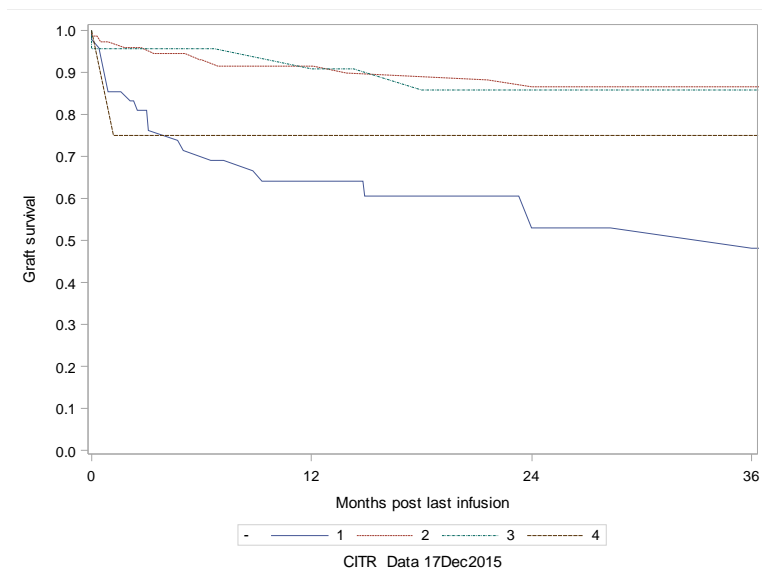
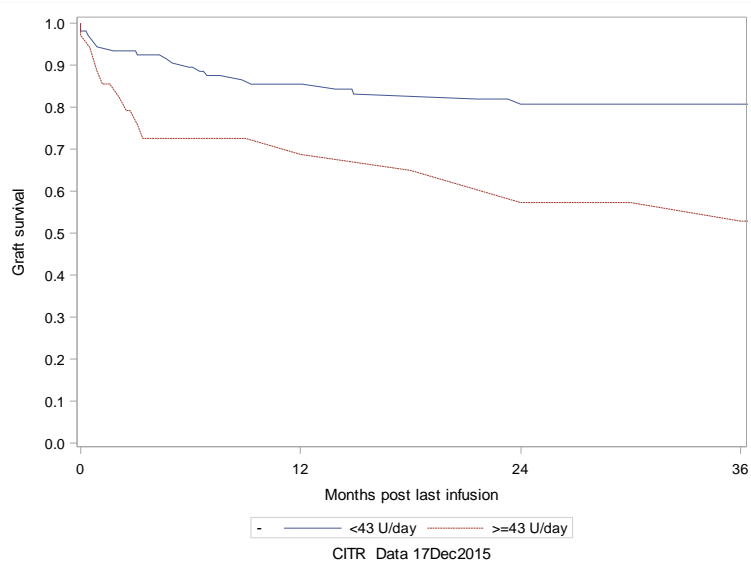


Exhibit A-3b. IAK Retention of C-peptide post last infusion (K-M plots) - Significant Predictors

The LIFETEST Procedure: Baseline insulin (Units/day)

Test of Equality over Strata			
Test	Chi-Square	DF	Pr > Chi-Square
Log-Rank	8.5496	1	0.0035
Wilcoxon	7.9494	1	0.0048
-2Log(LR)	10.0115	1	0.0016



The LIFETEST Procedure: Baseline insulin (units/day/kg)

Test of Equality over Strata			
Test	Chi-Square	DF	Pr > Chi-Square
Log-Rank	6.5202	2	0.0384
Wilcoxon	6.9616	2	0.0308
-2Log(LR)	6.5526	2	0.0378

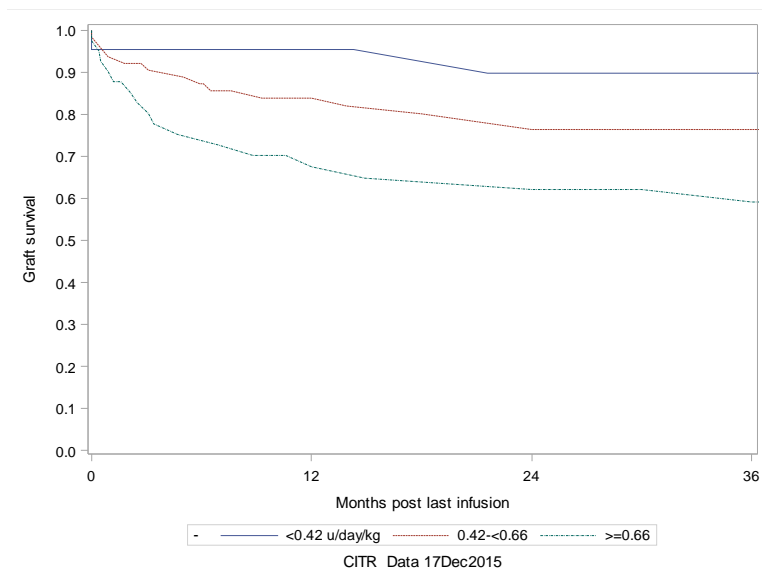
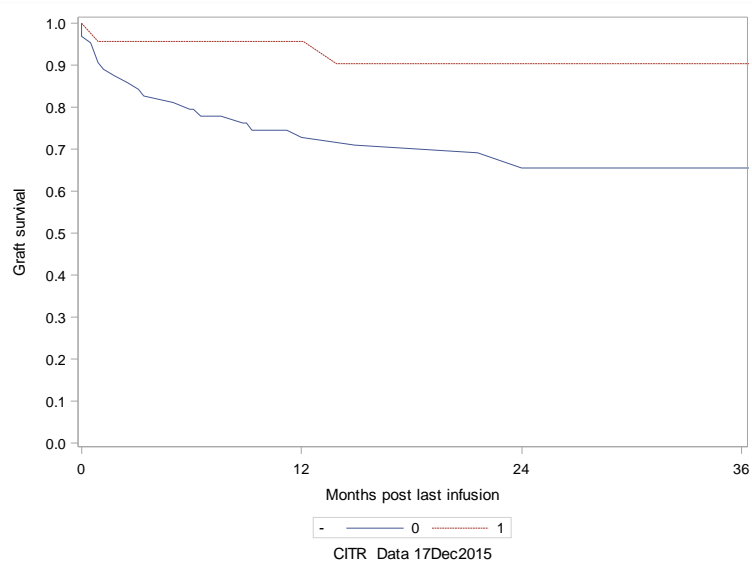


Exhibit A-3b. IAK Retention of C-peptide post last infusion (K-M plots) - Significant Predictors

The LIFETEST Procedure: Baseline GAD 65 autoantibody (GAA, 1=+)

Test of Equality over Strata			
Test	Chi-Square	DF	Pr > Chi-Square
Log-Rank	4.4756	1	0.0344
Wilcoxon	4.4006	1	0.0359
-2Log(LR)	6.5946	1	0.0102



The LIFETEST Procedure: Baseline lipid lowering medication

Test of Equality over Strata			
Test	Chi-Square	DF	Pr > Chi-Square
Log-Rank	5.1726	1	0.0229
Wilcoxon	5.3002	1	0.0213
-2Log(LR)	5.9985	1	0.0143

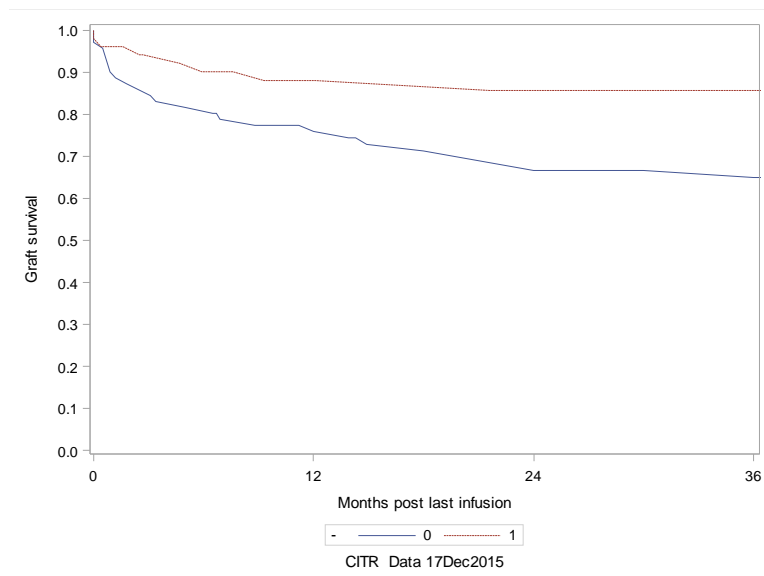
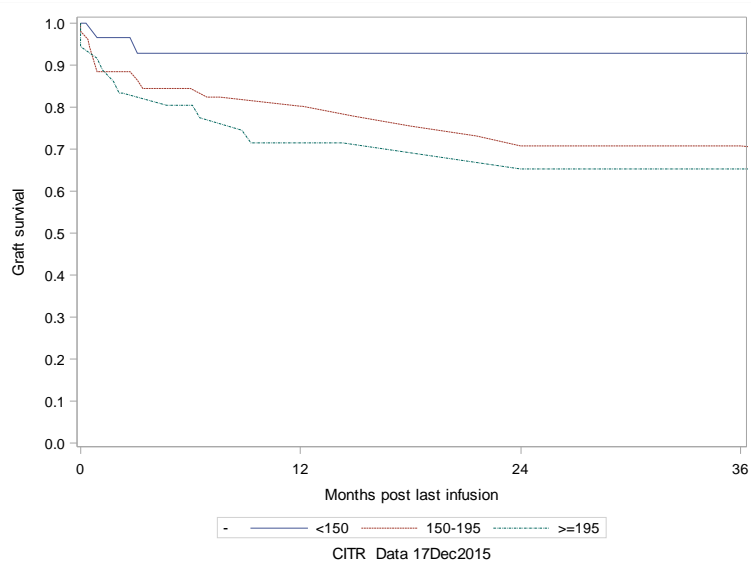


Exhibit A-3b. IAK Retention of C-peptide post last infusion (K-M plots) - Significant Predictors

The LIFETEST Procedure: Baseline cholesterol

Test of Equality over Strata			
Test	Chi-Square	DF	Pr > Chi-Square
Log-Rank	6.8115	2	0.0332
Wilcoxon	5.4998	2	0.0639
-2Log(LR)	9.3812	2	0.0092



The LIFETEST Procedure: Donor Blood Type A (0:Other 1:A)

Test of Equality over Strata			
Test	Chi-Square	DF	Pr > Chi-Square
Log-Rank	3.3486	1	0.0673
Wilcoxon	4.0801	1	0.0434
-2Log(LR)	2.8433	1	0.0918

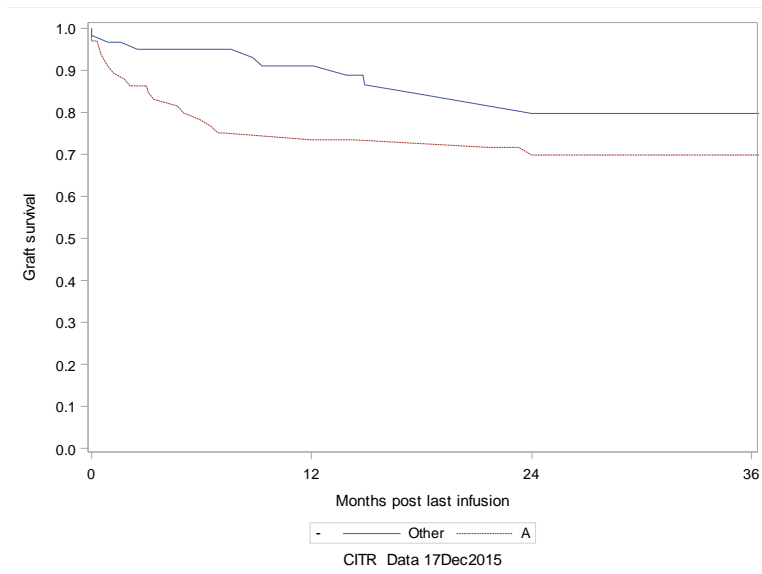
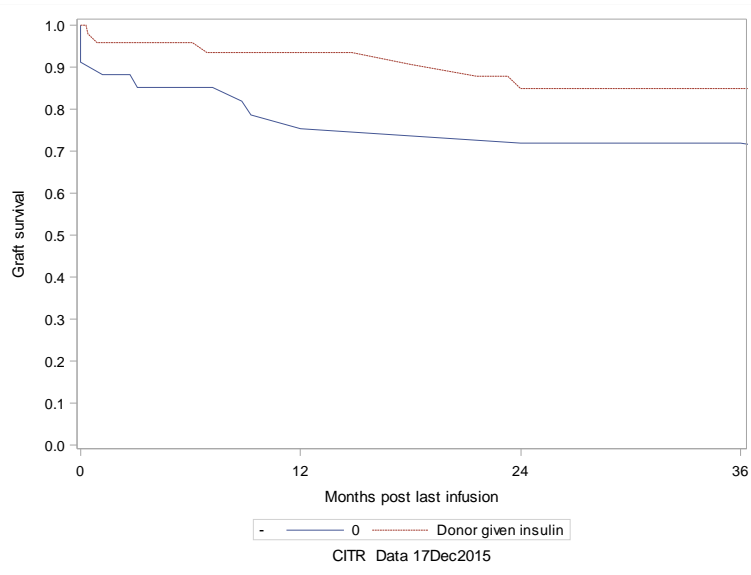


Exhibit A-3b. IAK Retention of C-peptide post last infusion (K-M plots) - Significant Predictors

The LIFETEST Procedure: Donor given insulin during hospital stay (0:No 1:Yes)

Test of Equality over Strata			
Test	Chi-Square	DF	Pr > Chi-Square
Log-Rank	3.2667	1	0.0707
Wilcoxon	3.5045	1	0.0612
-2Log(LR)	1.7608	1	0.1845



The LIFETEST Procedure: Liberase

Test of Equality over Strata			
Test	Chi-Square	DF	Pr > Chi-Square
Log-Rank	3.6116	1	0.0574
Wilcoxon	3.1779	1	0.0746
-2Log(LR)	2.0587	1	0.1513

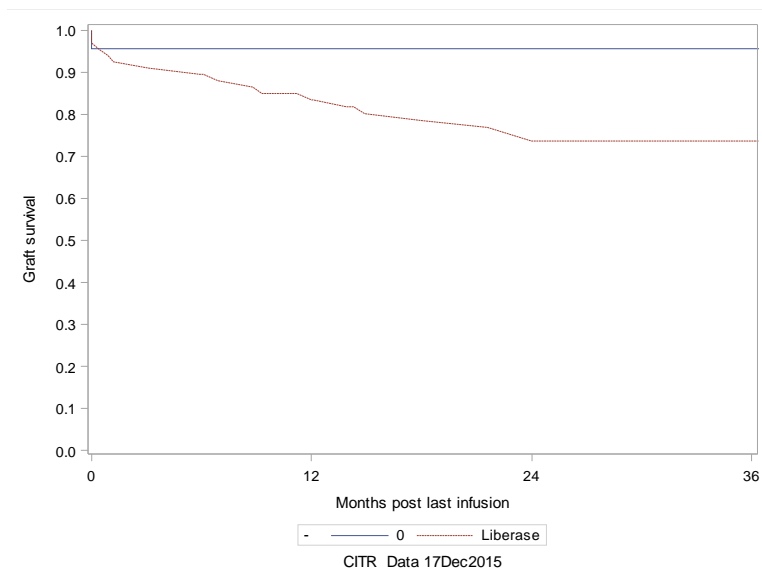
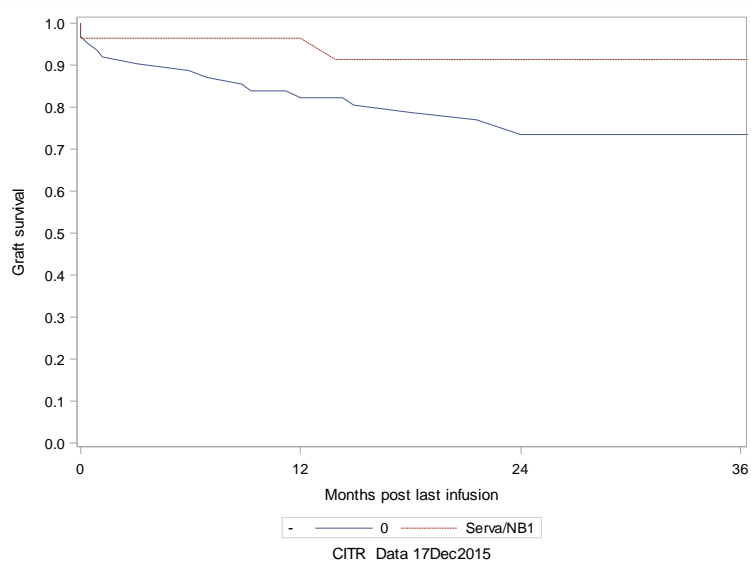


Exhibit A-3b. IAK Retention of C-peptide post last infusion (K-M plots) - Significant Predictors

The LIFETEST Procedure: Serva/NB1

Test of Equality over Strata			
Test	Chi-Square	DF	Pr > Chi-Square
Log-Rank	3.1789	1	0.0746
Wilcoxon	3.0052	1	0.0830
-2Log(LR)	1.1600	1	0.2815



The LIFETEST Procedure: Thermolysin

Test of Equality over Strata			
Test	Chi-Square	DF	Pr > Chi-Square
Log-Rank	3.9057	1	0.0481
Wilcoxon	3.0473	1	0.0809
-2Log(LR)	4.4295	1	0.0353

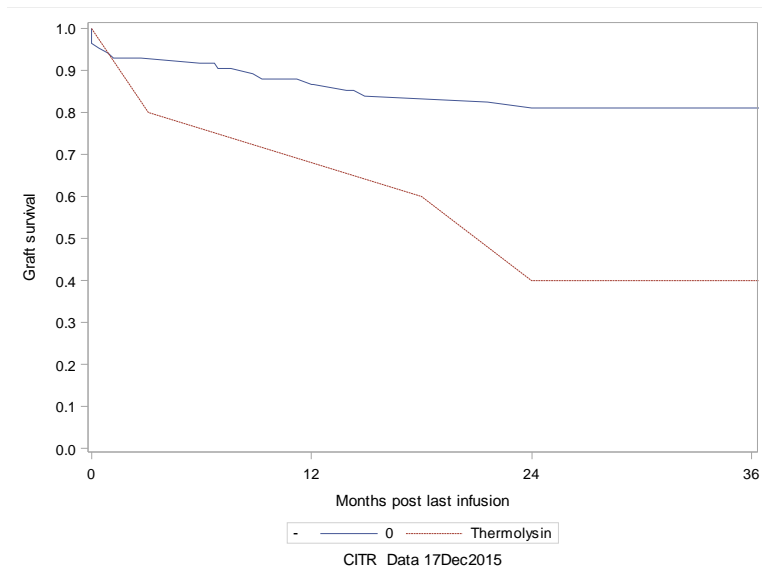
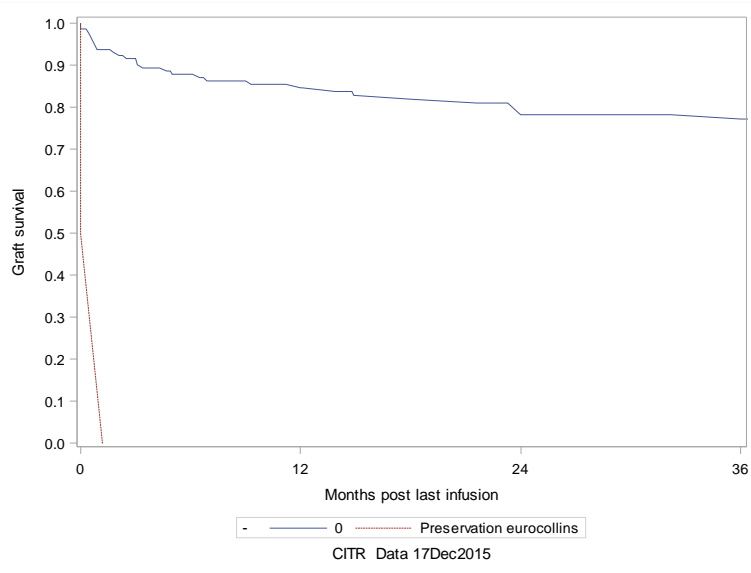


Exhibit A-3b. IAK Retention of C-peptide post last infusion (K-M plots) - Significant Predictors

The LIFETEST Procedure: Pancpres Euro

Test of Equality over Strata			
Test	Chi-Square	DF	Pr > Chi-Square
Log-Rank	37.8159	1	<.0001
Wilcoxon	36.3582	1	<.0001
-2Log(LR)	18.9901	1	<.0001



The LIFETEST Procedure: Donor ALT

Test of Equality over Strata			
Test	Chi-Square	DF	Pr > Chi-Square
Log-Rank	10.5717	1	0.0011
Wilcoxon	7.7308	1	0.0054
-2Log(LR)	7.1876	1	0.0073

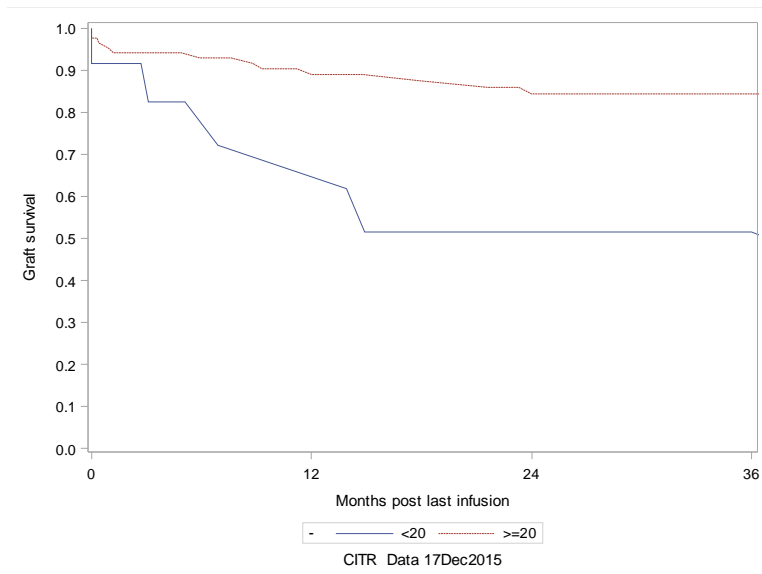
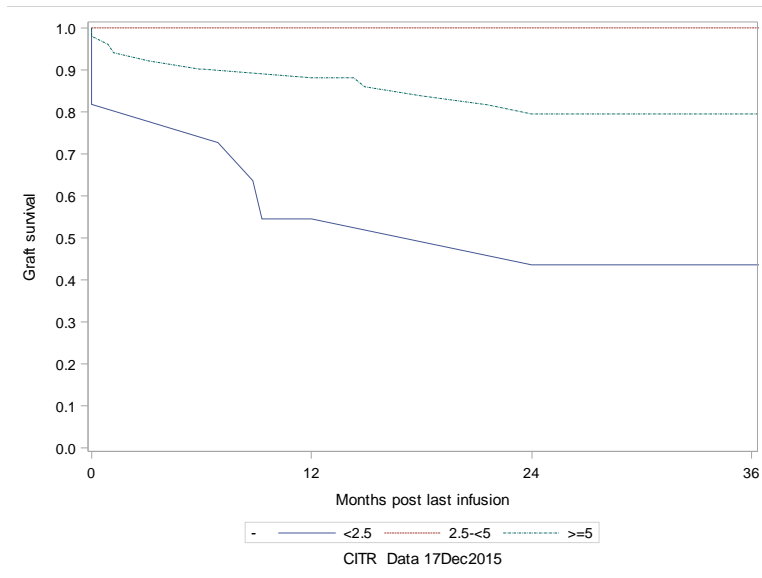


Exhibit A-3b. IAK Retention of C-peptide post last infusion (K-M plots) - Significant Predictors

The LIFETEST Procedure: Packed cell volume (mL)

Test of Equality over Strata			
Test	Chi-Square	DF	Pr > Chi-Square
Log-Rank	11.1834	2	0.0037
Wilcoxon	10.9870	2	0.0041
-2Log(LR)*	16.8283	2	0.0002

Warning: -2Log(LR) test is questionable since some strata have no events.



The LIFETEST Procedure: IEQ's Infused

Test of Equality over Strata			
Test	Chi-Square	DF	Pr > Chi-Square
Log-Rank	18.5993	2	<.0001
Wilcoxon	18.9684	2	<.0001
-2Log(LR)	18.5453	2	<.0001

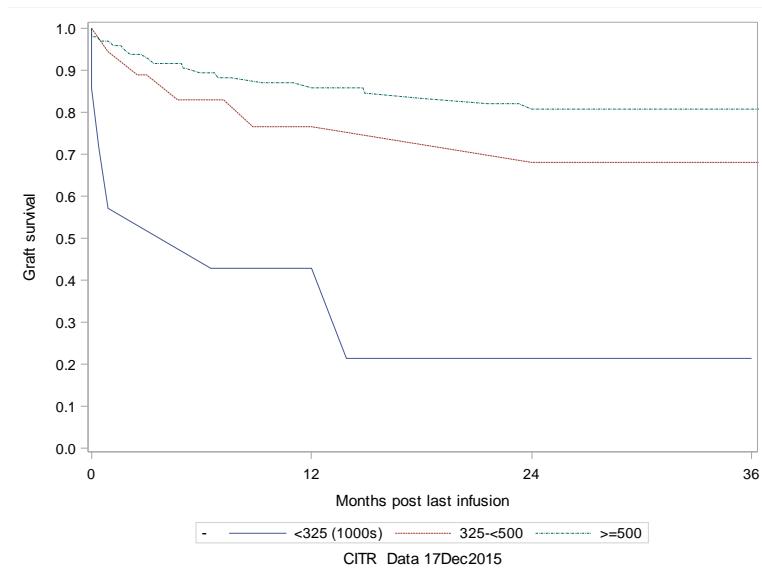
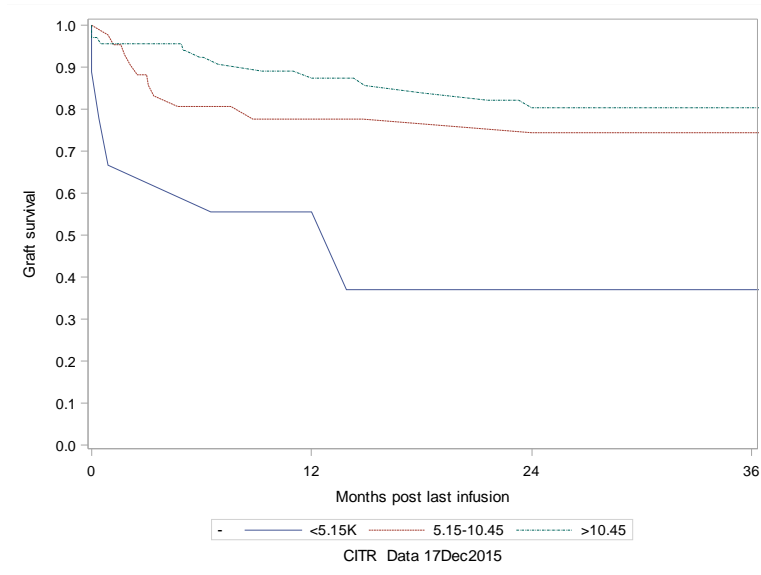


Exhibit A-3b. IAK Retention of C-peptide post last infusion (K-M plots) - Significant Predictors

The LIFETEST Procedure: IEQs infused/kg recipient

Test of Equality over Strata			
Test	Chi-Square	DF	Pr > Chi-Square
Log-Rank	9.2134	2	0.0100
Wilcoxon	10.4905	2	0.0053
-2Log(LR)	10.2565	2	0.0059



The LIFETEST Procedure: IEQ's Infused (1:<500 (1000s) 2:≥500 (1000s))

Test of Equality over Strata			
Test	Chi-Square	DF	Pr > Chi-Square
Log-Rank	5.8958	1	0.0152
Wilcoxon	6.8867	1	0.0087
-2Log(LR)	8.4056	1	0.0037

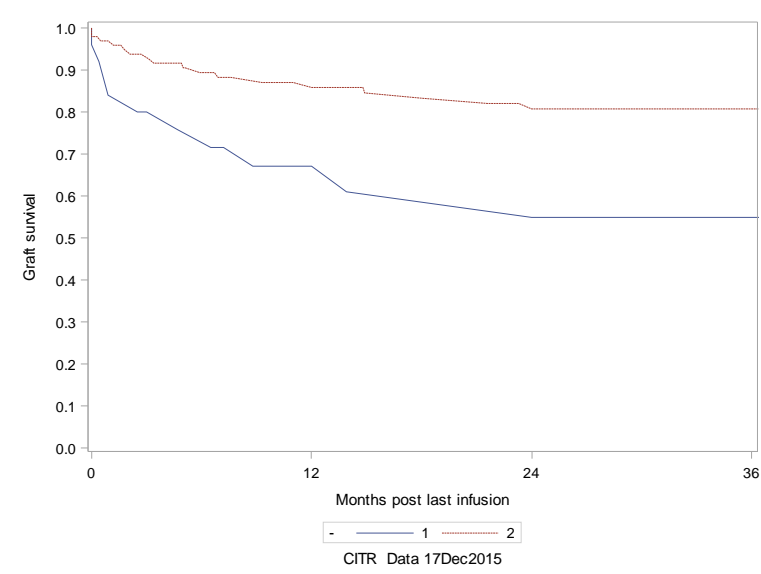
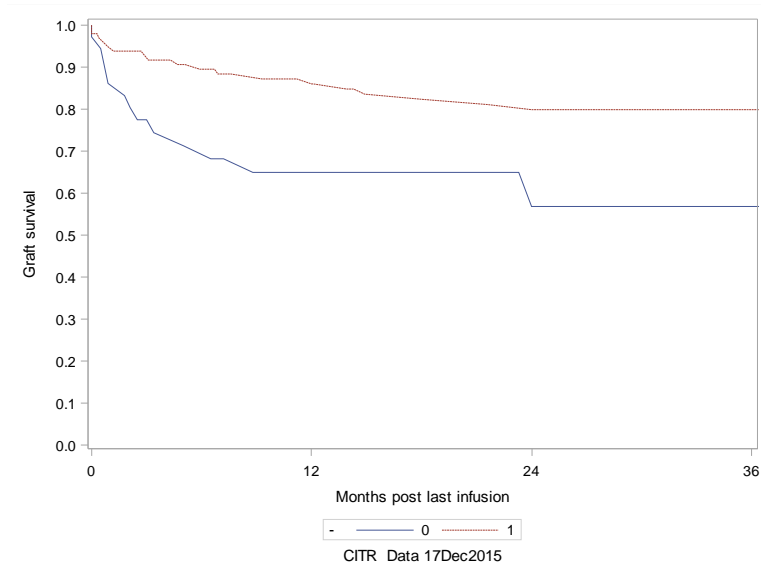


Exhibit A-3b. IAK Retention of C-peptide post last infusion (K-M plots) - Significant Predictors

The LIFETEST Procedure: IL2RA (0:No 1:Yes)

Test of Equality over Strata			
Test	Chi-Square	DF	Pr > Chi-Square
Log-Rank	6.9353	1	0.0085
Wilcoxon	7.5875	1	0.0059
-2Log(LR)	10.6494	1	0.0011



The LIFETEST Procedure: mTOR (0:No 1:Yes)

Test of Equality over Strata			
Test	Chi-Square	DF	Pr > Chi-Square
Log-Rank	8.3593	1	0.0038
Wilcoxon	9.9641	1	0.0016
-2Log(LR)	14.5333	1	0.0001

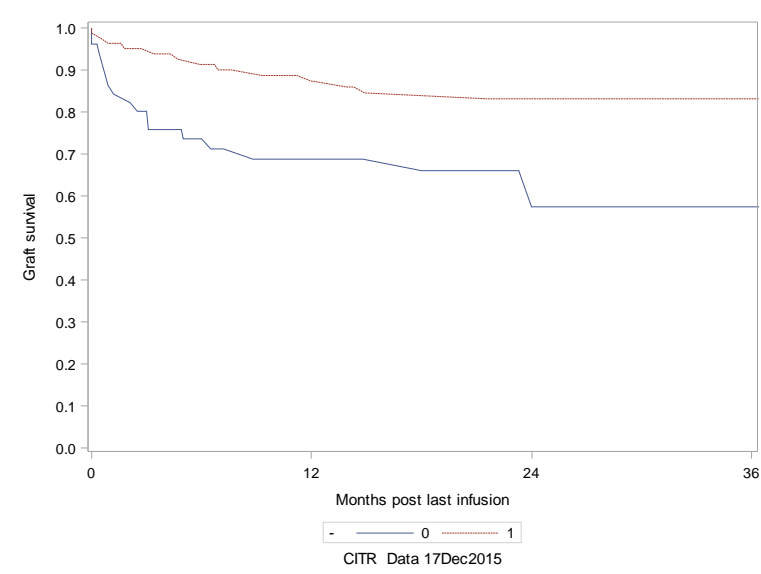


Exhibit A-3b. IAK Retention of C-peptide post last infusion (K-M plots) - Significant Predictors

The LIFETEST Procedure: Induction

Test of Equality over Strata			
Test	Chi-Square	DF	Pr > Chi-Square
Log-Rank	8.1312	2	0.0172
Wilcoxon	9.0911	2	0.0106
-2Log(LR)	12.0213	2	0.0025

