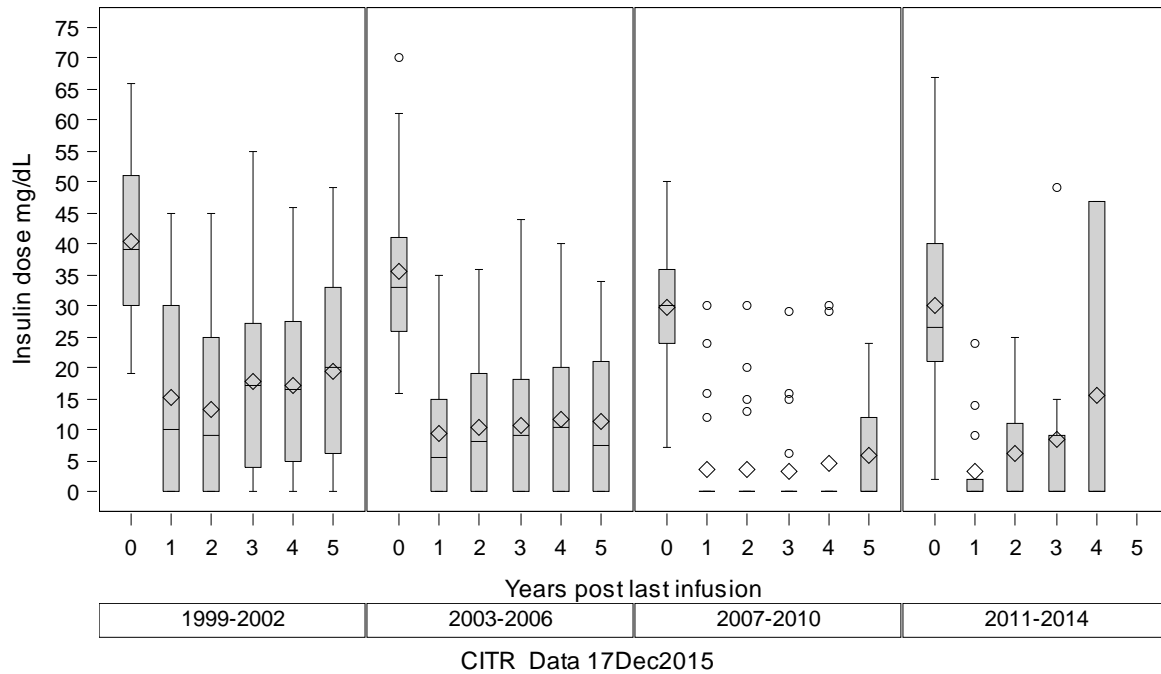


# Exhibit A-9b. IAK Insulin dose post last infusion (box plots and generalized estimating equations)

Insulin dose (mg/dL) by Era



## The GENMOD Procedure

### Analysis Of GEE Parameter Estimates

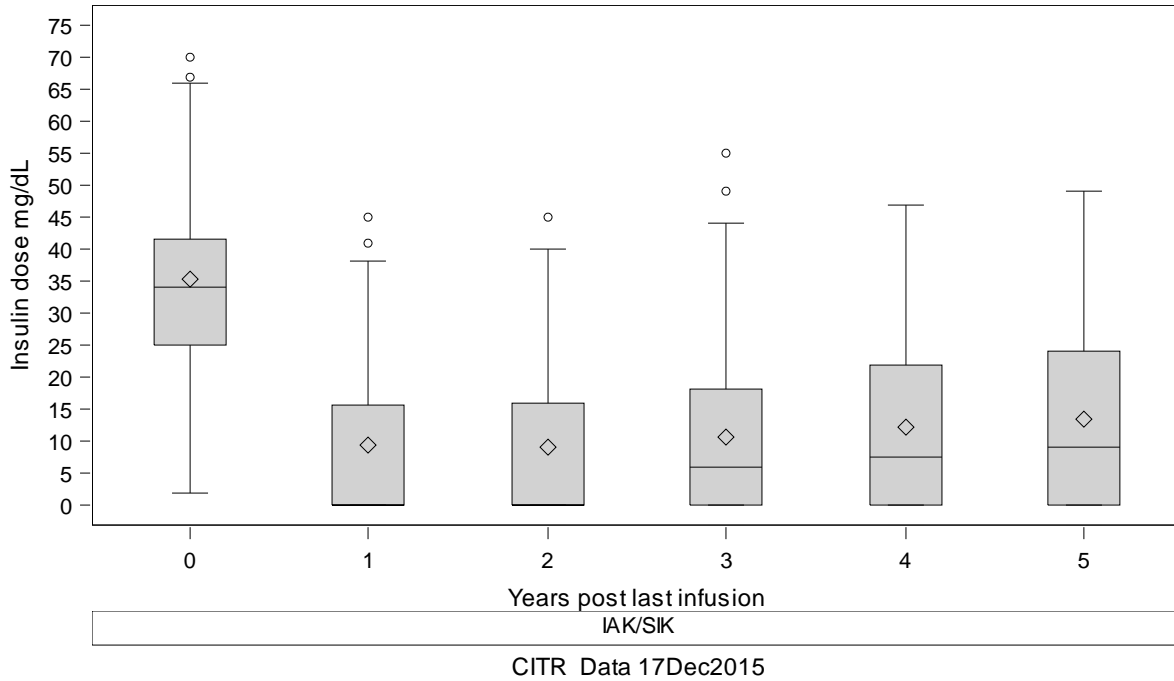
#### Empirical Standard Error Estimates

Parameter	Estimate	Standard Error	95% Confidence Limits		Z	Pr >  Z
Intercept	3.8349	0.0932	3.6521	4.0176	41.13	<.0001
era	-0.2214	0.0461	-0.3117	-0.1311	-4.81	<.0001
yrspli	-0.3732	0.0472	-0.4657	-0.2807	-7.91	<.0001

Era	1			2			3			4			5					
	<i>cpavgins</i>						<i>cpavgins</i>						<i>cpavgins</i>					
	N	Mea	SE	N	Mea	SE	N	Mea	SE	N	Mea	SE	N	Mea	SE			
1999-2002	37	15	3	26	13	3	23	18	3	20	17	3	19	19	4			
2003-2006	44	10	2	40	10	2	31	11	2	22	12	2	16	11	3			
2007-2010	24	3	2	22	4	2	20	3	2	13	5	3	10	6	3			
2011-2014	15	3	2	13	6	3	8	8	6	3	16	16	.	.	.			

# Exhibit A-9b. IAK Insulin dose post last infusion (box plots and generalized estimating equations)

Insulin dose (mg/dL) by Transplant type



## The GENMOD Procedure

Analysis Of GEE Parameter Estimates

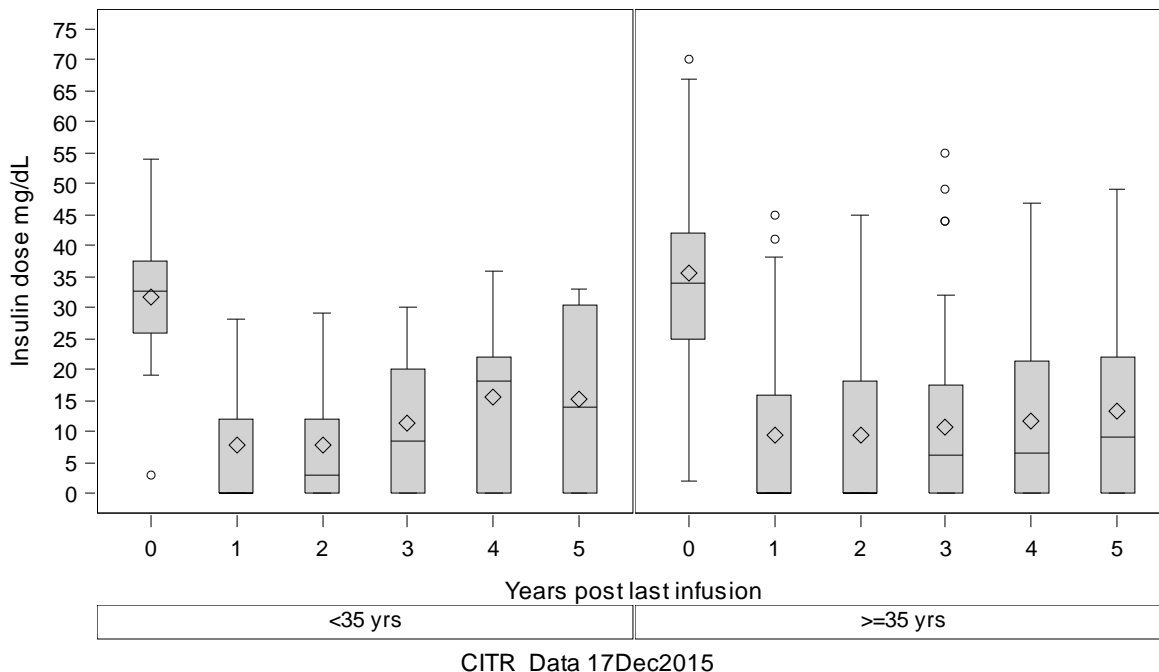
Empirical Standard Error Estimates

Parameter	Estimate	Standard Error	95% Confidence Limits		Z	Pr >  Z
Intercept	3.4609	0.0338	3.3946	3.5273	102.28	<.0001
typeoftran	0.0000	0.0000	0.0000	0.0000	.	.
yrspli	-0.5284	0.0582	-0.6426	-0.4143	-9.07	<.0001

Transplant type	1			2			3			4			5		
	cpavgins			cpavgins			cpavgins			cpavgins			cpavgins		
	N	Mea n	SE	N	Mea n	SE	N	Mea n	SE	N	Mea n	SE	N	Mea n	SE
IAK	120	9	1	101	9	1	82	11	1	58	12	2	45	14	2

# Exhibit A-9b. IAK Insulin dose post last infusion (box plots and generalized estimating equations)

Insulin dose (mg/dL) by Recipient age



## The GENMOD Procedure

### Analysis Of GEE Parameter Estimates

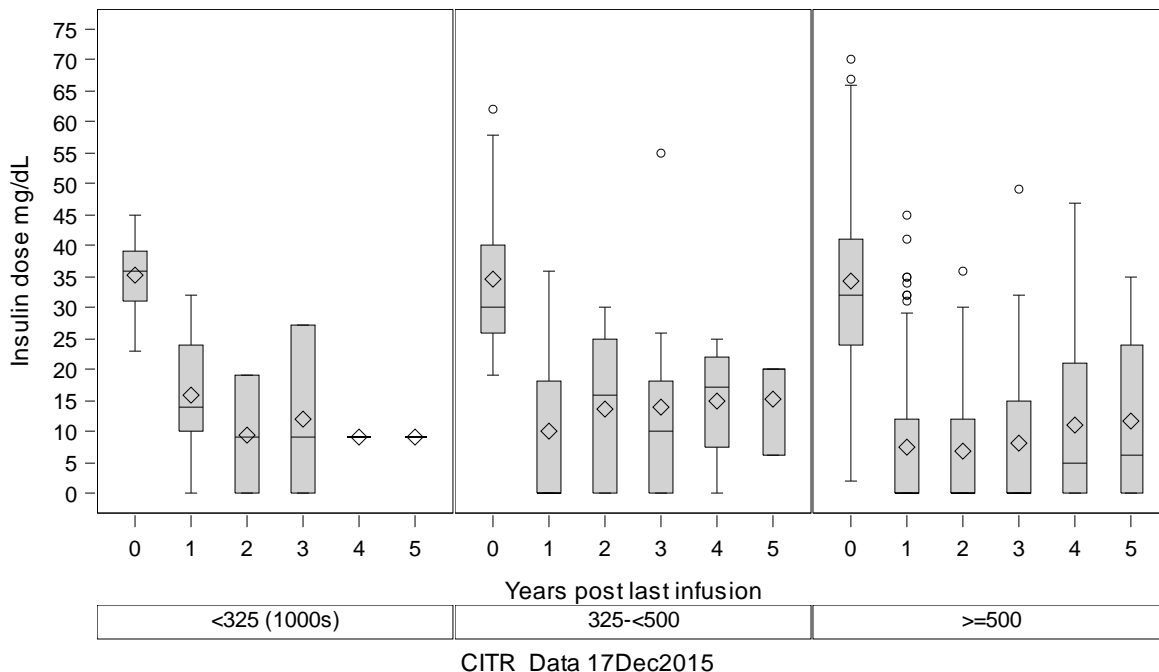
#### Empirical Standard Error Estimates

Parameter	Estimate	Standard Error	95% Confidence Limits		Z	Pr >  Z
Intercept	3.2357	0.2848	2.6775	3.7939	11.36	<.0001
age_c	0.1178	0.1471	-0.1706	0.4062	0.80	0.4234
yrspli	-0.5315	0.0582	-0.6456	-0.4175	-9.13	<.0001

Recipient age	1		2			3			4			5			
	cpavgins						cpavgins								
	N	Mea	n	SE	N	Mea	n	SE	N	Mea	n	SE	N	Mea	n
<35 yrs	10	8	4	9	8	3	6	11	5	6	16	6	4	15	9
>=35 yrs	110	9	1	92	9	1	76	11	2	52	12	2	41	13	2

# Exhibit A-9b. IAK Insulin dose post last infusion (box plots and generalized estimating equations)

Insulin dose (mg/dL) by Total IEQs all infusions



## The GENMOD Procedure

Analysis Of GEE Parameter Estimates

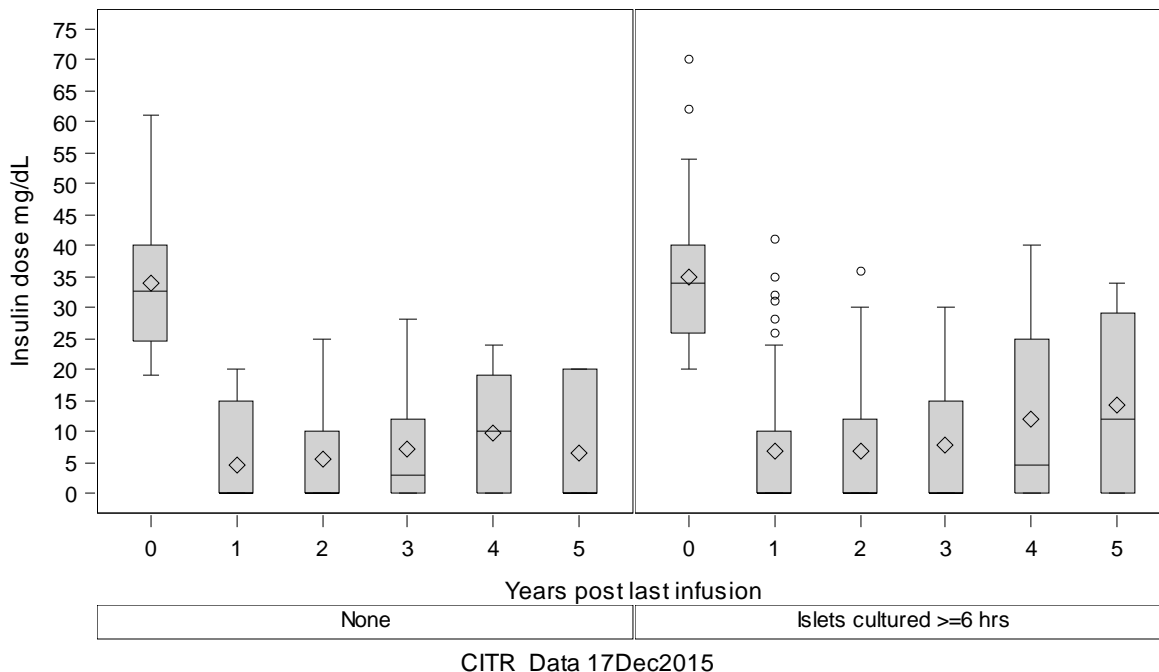
Empirical Standard Error Estimates

Parameter	Estimate	Standard Error	95% Confidence Limits		Z	Pr >  Z
Intercept	3.6437	0.1190	3.4103	3.8770	30.61	<.0001
ieqinf_c	-0.0598	0.0467	-0.1514	0.0318	-1.28	0.2006
yrspli	-0.7649	0.0763	-0.9144	-0.6154	-10.03	<.0001

	1			2			3			4			5					
	<i>cpavgins</i>						<i>cpavgins</i>						<i>cpavgins</i>					
	N	Mea n	SE	N	Mea n	SE	N	Mea n	SE	N	Mea n	SE	N	Mea n	SE			
Total IEQs all infusions																		
<325 (1000s)	5	16	6	3	9	5	3	12	8	1	9	.	1	9	.			
325-<500	13	10	4	9	14	4	9	14	6	4	15	5	3	15	5			
>=500	82	7	1	74	7	1	59	8	1	48	11	2	35	12	2			

# Exhibit A-9b. IAK Insulin dose post last infusion (box plots and generalized estimating equations)

Insulin dose (mg/dL) by Cultured>6h



## The GENMOD Procedure

### Analysis Of GEE Parameter Estimates

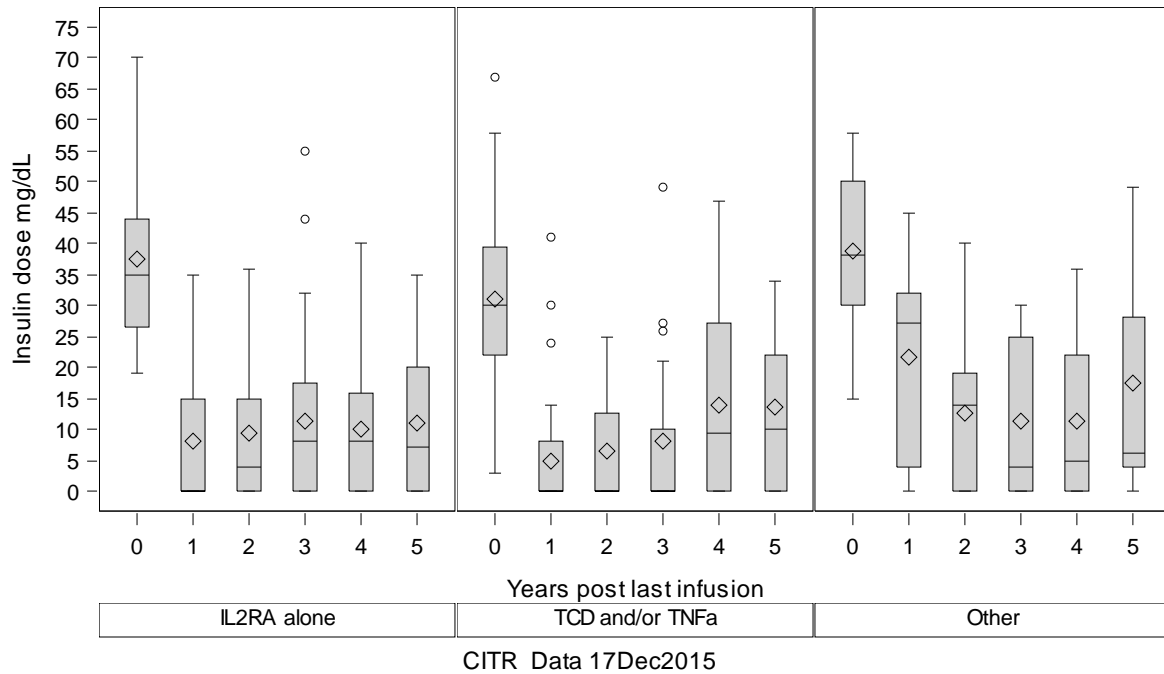
#### Empirical Standard Error Estimates

Parameter	Estimate	Standard Error	95% Confidence Limits		Z	Pr >  Z
Intercept	3.4986	0.0716	3.3583	3.6389	48.88	<.0001
cultured_	0.0414	0.0862	-0.1275	0.2104	0.48	0.6309
yrspli	-1.1717	0.1456	-1.4570	-0.8863	-8.05	<.0001

	1			2			3			4			5					
	cpavgins						cpavgins						cpavgins					
	N	Mea	SE	N	Mea	SE	N	Mea	SE	N	Mea	SE	N	Mea	SE			
Cultured>6h																		
<b>None</b>	14	5	2	12	5	3	11	7	3	10	10	3	7	7	4			
<b>Islets cultured &gt;=6 hrs</b>	45	7	2	39	7	2	33	8	2	22	12	3	17	14	3			

# Exhibit A-9b. IAK Insulin dose post last infusion (box plots and generalized estimating equations)

Insulin dose (mg/dL) by Induction



## The GENMOD Procedure

### Analysis Of GEE Parameter Estimates

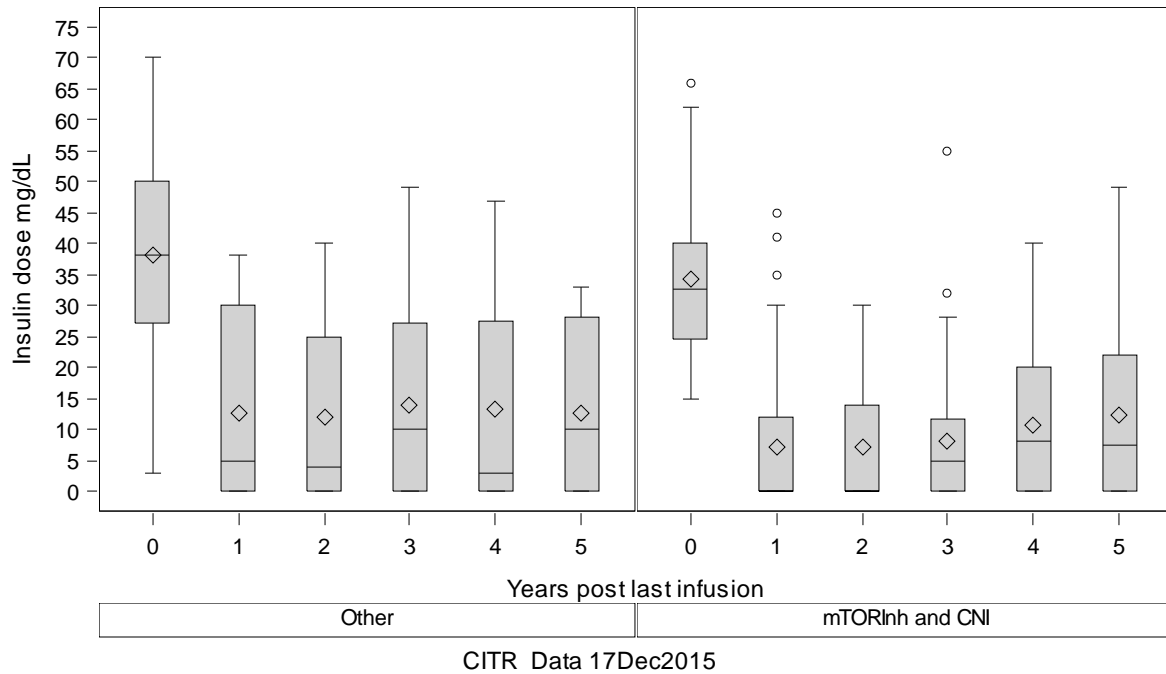
#### Empirical Standard Error Estimates

Parameter	Estimate	Standard Error	95% Confidence Limits		Z	Pr >  Z
Intercept	3.4621	0.0479	3.3682	3.5560	72.25	<.0001
inducco	0.0289	0.0533	-0.0755	0.1334	0.54	0.5874
yrspli	-0.5865	0.0600	-0.7041	-0.4689	-9.77	<.0001

Induction	1			2			3			4			5		
	cpavgins			cpavgins			cpavgins			cpavgins			cpavgins		
	N	Mea n	SE	N	Mea n	SE	N	Mea n	SE	N	Mea n	SE	N	Mea n	SE
<b>IL2RA alone</b>	56	8	2	53	9	2	48	11	2	33	10	2	25	11	2
<b>TCD and/or TNFa</b>	35	5	2	28	6	2	22	8	3	16	14	4	13	14	4
<b>Other</b>	17	22	4	11	13	4	7	11	5	6	11	6	5	17	9

# Exhibit A-9b. IAK Insulin dose post last infusion (box plots and generalized estimating equations)

Insulin dose (mg/dL) by Maintenance



## The GENMOD Procedure

### Analysis Of GEE Parameter Estimates

#### Empirical Standard Error Estimates

Parameter	Estimate	Standard Error	95% Confidence Limits		Z	Pr >  Z
Intercept	3.5800	0.0607	3.4610	3.6989	58.98	<.0001
<i>maint</i>	-0.1790	0.0803	-0.3364	-0.0216	-2.23	0.0258
<i>yrspli</i>	-0.5671	0.0602	-0.6850	-0.4491	-9.42	<.0001

Maintenance	1			2			3			4			5		
	<i>cpavgins</i>			<i>cpavgins</i>			<i>cpavgins</i>			<i>cpavgins</i>			<i>cpavgins</i>		
	N	Mea n	SE	N	Mea n	SE	N	Mea n	SE	N	Mea n	SE	N	Mea n	SE
<b>Other</b>	43	13	2	33	12	2	29	14	3	16	13	4	11	13	4
<b>mTORInh and CNI</b>	65	7	1	59	7	1	48	8	2	39	11	2	32	12	2